

VOR/DME RWY 29

VORTAC PGY 116.45 Chan 111(Y)	APCH CRS 279°	Rwy ldg TDZE Arprt Elev 7501 26 26
---------------------------------------------------	-------------------------	------------------------------------------------------------------------

[USN]

NORTH ISLAND NAS (HALSEY FIELD) (KNZY)

▼ * When ALS inop, increase CAT AB vis to 1 mile, CAT CD vis to 1¾ miles.
** Circling not authorized W of Rwy 18-36. Circling authorized to Rwy 18 only.

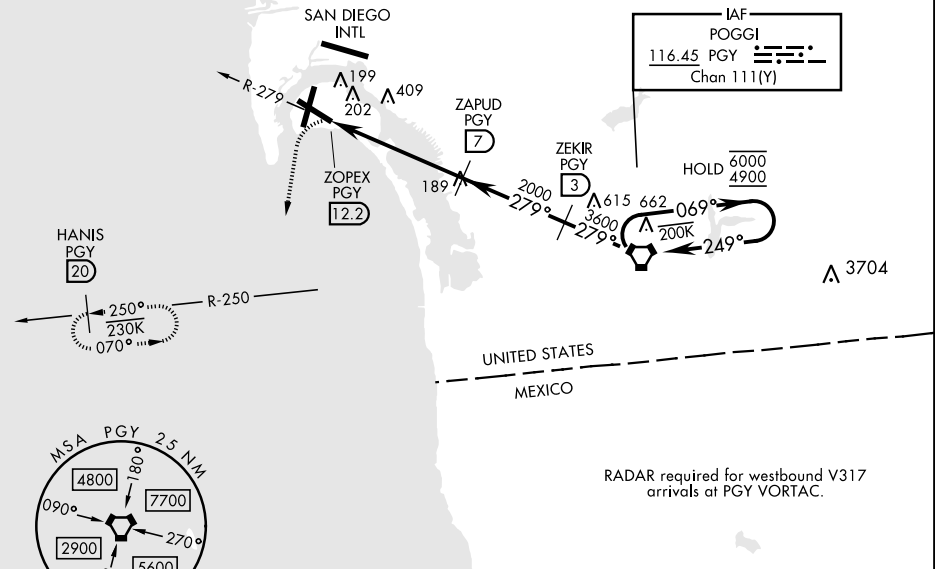


MISSED APPROACH: Climbing left turn to 2000 via hdg 177° intercept PGY VORTAC R-250 to HANIS and hold.

ATIS ★ 317.8	SOCAL APP CON 125.15 317.55	TOWER ★ 135.1 336.4	GND CON 118.0 360.675	CLNC DEL 128.4 288.25	PAR/ASR
------------------------	---------------------------------------	-------------------------------	---------------------------------	---------------------------------	---------

Visibility reduction by helicopters not authorized.

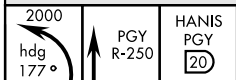
CAUTION:
Final apch length 12.2 NM.
Final apch intersects RCL at 3733'.



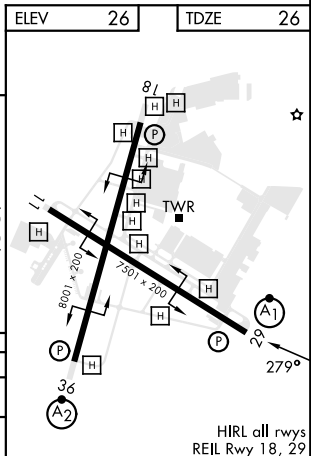
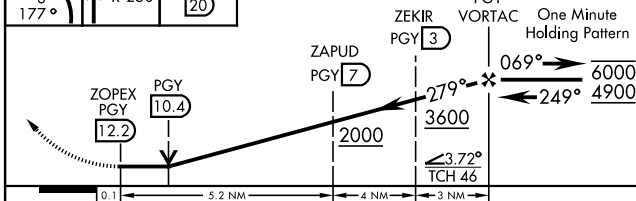
SW-3, 17 APR 2025 to 15 MAY 2025

SW-3, 17 APR 2025 to 15 MAY 2025

EMERG SAFE ALT 100 NM 13,700



VGSI and descent angles not coincident (VGSI Angle 3.00/TCH 46).



CATEGORY	A	B	C	D
S-29 *	660-¾ 634 (700-¾)		660-1⅓ 634 (700-1⅓)	
☑ CIRCLING **	660-1 634 (700-1)		NOT AUTHORIZED	

VOR/DME RWY 29

HIRL all rwys
REIL Rwy 18, 29