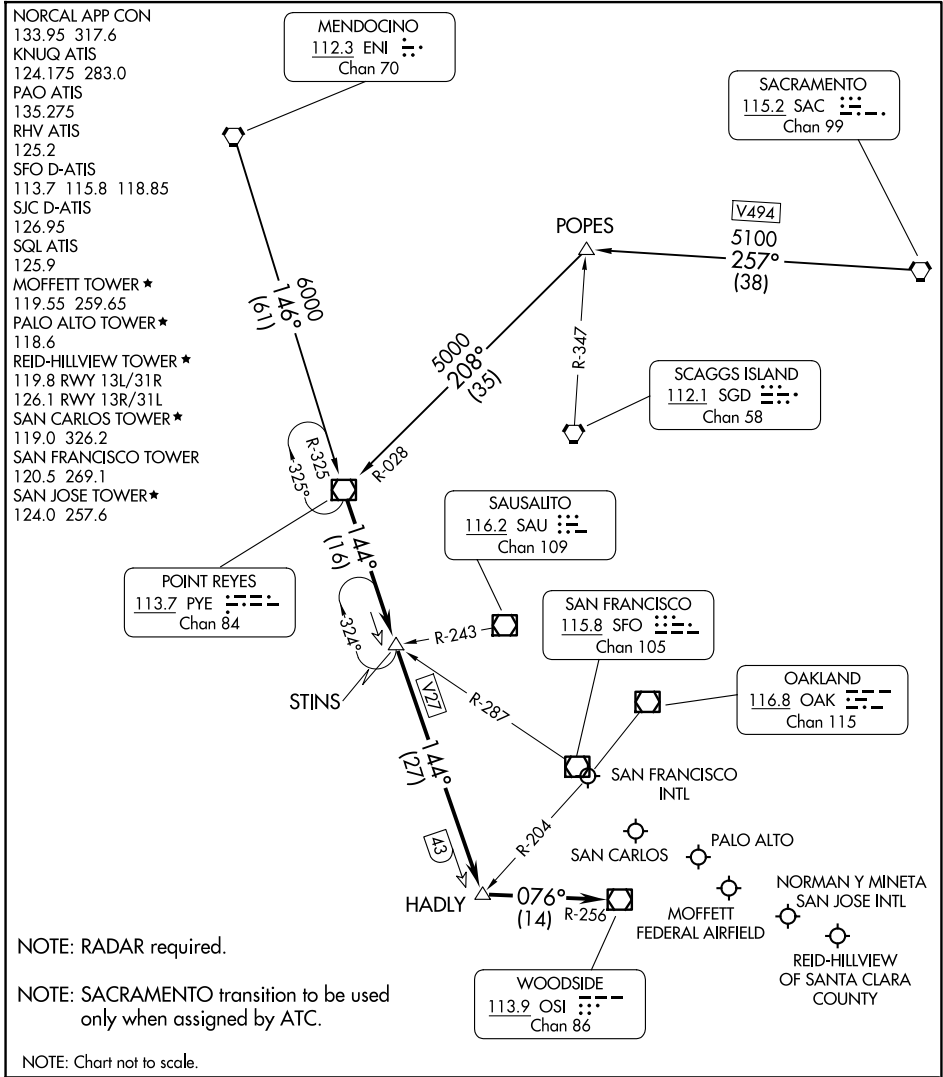


# POINT REYES THREE ARRIVAL

AL-375 (FAA)

SAN FRANCISCO, CALIFORNIA



SW-2, 17 APR 2025 to 15 MAY 2025

SW-2, 17 APR 2025 to 15 MAY 2025

## ARRIVAL ROUTE DESCRIPTION

MENDOCINO TRANSITION (ENI.PYE3): From over ENI VORTAC on ENI R-146 and PYE R-325 to PYE VOR/DME. Thence. . .

SACRAMENTO TRANSITION (SAC.PYE3): From over SAC VORTAC on SAC R-257 and PYE R-028 to PYE VOR/DME. Thence. . .

. . . From over PYE VOR/DME on PYE R-144 to HADLY, then on OSI R-256 to OSI VOR/DME. Expect RADAR vectors to final approach course.

# POINT REYES THREE ARRIVAL

SAN FRANCISCO, CALIFORNIA