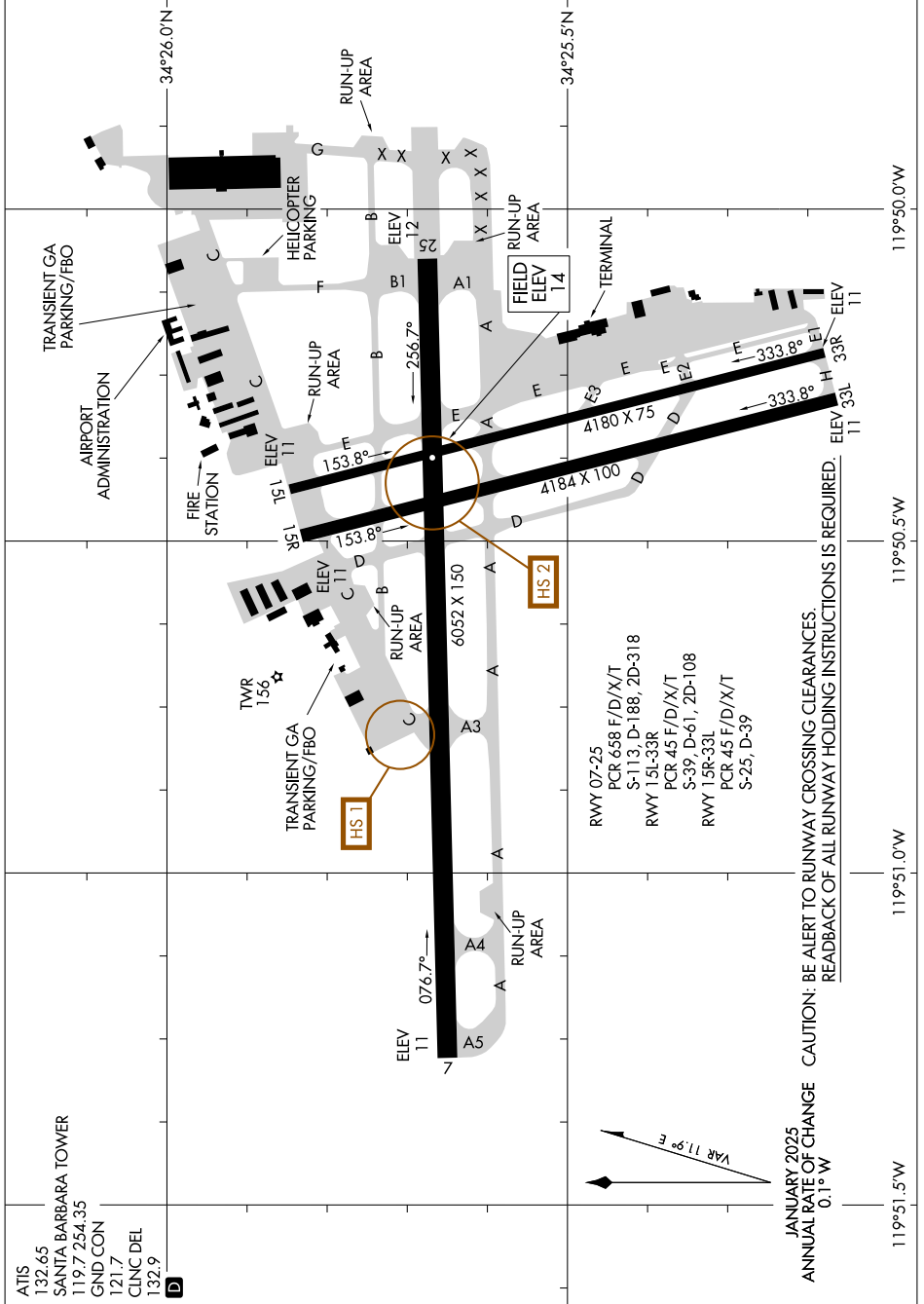


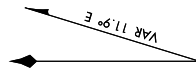
SW-3, 17 APR 2025 to 15 MAY 2025



SW-3, 17 APR 2025 to 15 MAY 2025

JANUARY 2025
ANNUAL RATE OF CHANGE
0.1° W

CAUTION: BE ALERT TO RUNWAY CROSSING CLEARANCES.
READBACK OF ALL RUNWAY HOLDING INSTRUCTIONS IS REQUIRED.



119°51.5'W

119°51.0'W

119°50.5'W

119°50.0'W

34°26.0'N

34°25.5'N