


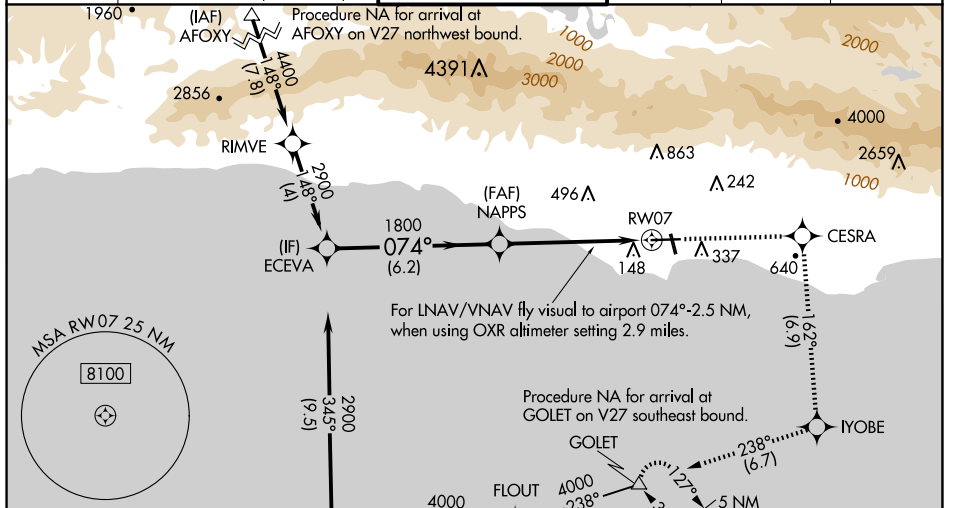
WAAS CH 78306 W07A	APP CRS 074°	Rwy Idg TDZE Apt Elev	6052 13 14
--	------------------------	-----------------------------	---------------------------------------

RNAV (GPS) RWY 7

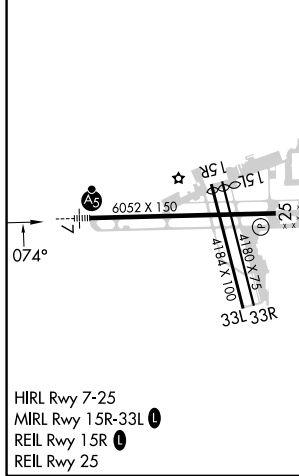
SANTA BARBARA MUNI (SBA)

RNP APCH - GPS.			MISSED APPROACH: Climb to 4000 direct CESRA and right turn on track 162° to YOBE and right turn on track 238° to GOLET and hold, continue climb-in-hold to 4000.
⚠ For uncompensated Baro-VNAV systems, LNAV/VNAV NA below 3°C or above 54°C. ⚠ Circling Rwy 15L/R and 33L/R NA at night. Rwy 7 helicopter visibility reduction below RVR 4000 NA. When local altimeter setting not received, use OXR altimeter setting and increase LPV DA to 392 feet; increase LNAV/VNAV DA to 686 feet and all visibilities ¼ SM. Increase all MDAs 100 feet, and LNAV visibility Cat C and D ½ SM, and Circling visibility Cat A/C ½ SM. VDP and Baro-VNAV NA when using OXR altimeter setting. For inop ALS, increase LPV all Cats visibility to RVR 4500 and LNAV Cat A to RVR 5500 and Cat C/D to 2 ½ SM. For inop ALS when using OXR altimeter setting, increase LPV all Cats visibility to RVR 5500 and LNAV/VNAV all Cats visibility to 1 ½ SM. Circling NA for Cats C and D north of Rwy 7-25.			

ATIS 132.65	SANTA BARBARA APP CON* 120.55 319.15 (151°-329°) 125.4 291.1 (330°-150°)	SANTA BARBARA TOWER* 119.7 (CTAF) 254.35	GND CON 121.7	CLNC DEL 132.9	UNICOM 122.95
-----------------------	--	---	-------------------------	--------------------------	-------------------------



ELEV 14	D	TDZE 13
---------	---	---------



ECEVA	4000	CESRA	YOBE	GOLET
↑	⬠	tr 162°	⬠	tr 238°
2900	NAPPS	For LNAV/VNAV fly visual to airport, 074° -2.5 NM, when using OXR altimeter setting 2.9 miles.		
1800	1800	2.4 NM to RW07	RW07	
6.2 NM		3.1 NM		2.4 NM
CATEGORY	A	B	C	D
LPV DA		309/40	296 (300-¾)	
LNAV/VNAV DA		603-1¼	590 (600-1¼)	
LNAV MDA	820/40	807 (900-¾)	820-1⅞	807 (900-1⅞)
CIRCLING	820-1 806 (900-1)	840-1¼ 826 (900-1¼)	840-2½ 826 (900-2½)	1000-3 986 (1000-3)

SW-3, 17 APR 2025 to 15 MAY 2025

SW-3, 17 APR 2025 to 15 MAY 2025