

WAAS CH 40311 W01A	APP CRS 005°	Rwy Idg 5234 TDZE 62 Apt Elev 62
--	------------------------	---

RNAV (GPS) RWY 1

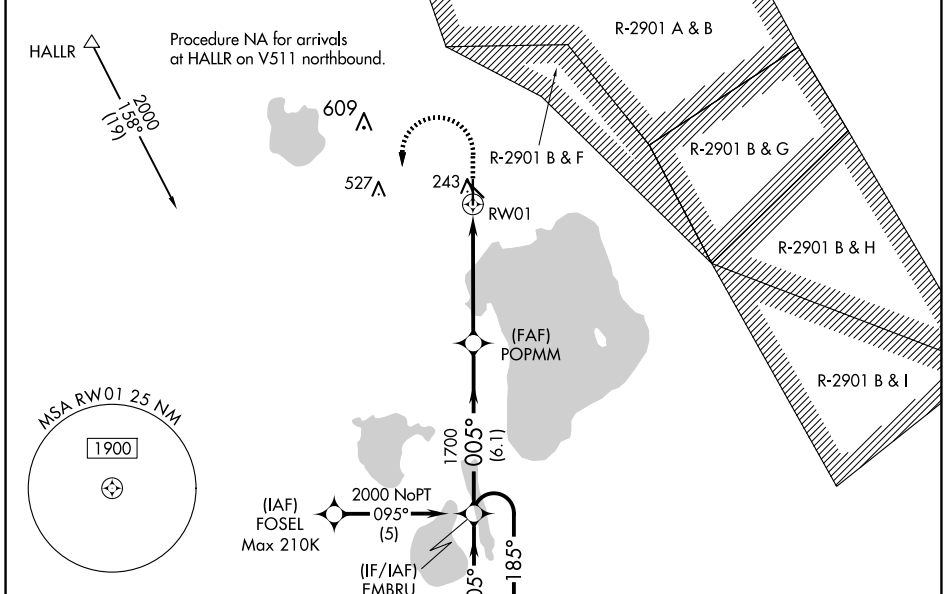
SEBRING RGNL (SEIF)

RNP APCH-GPS.

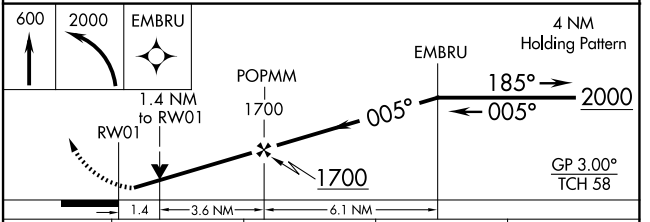
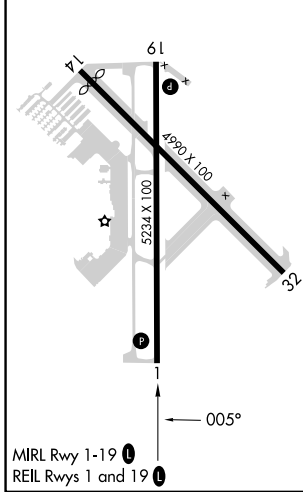
▼ **NA** For uncompensated Baro-VNAV systems, LNAV/VNAV NA below -15°C or above 54°C. When local altimeter setting not received, use VRB altimeter setting; increase LPV DA to 503 feet and all visibilities ½ SM, increase LNAV/VNAV DA to 530 feet and all visibilities ¾ SM; increase all MDAs 140 feet and LNAV visibility Cats C and D ¾ SM, increase Circling visibility Cat C ½ SM and visibility Cat D ¼ SM. Circling Rwy 14 NA at night. VDP and Baro-VNAV NA when using VRB altimeter. Rwy 1 helicopter visibility reduction below ¾ SM NA.

MISSED APPROACH: Climb to 600 then climbing left turn to 2000 direct EMBRU and hold.

AWOS-3 119.475	MIAMI CENTER 134.55 257.7	UNICOM 122.7 (CTAF) ①
--------------------------	-------------------------------------	--



ELEV 62	TDZE 62
---------	---------



CATEGORY	A	B	C	D
LPV DA	381-1 319 (400-1)			
LNAV/VNAV DA	408-1½ 346 (400-1½)			
LNAV MDA	540-1 478 (500-1)		540-1¾ 478 (500-1¾)	
CIRCLING	600-1 538 (600-1)		600-1½ 880-2¾ 538 (600-1½) 818 (900-2¾)	

SE-3, 17 APR 2025 to 15 MAY 2025

SE-3, 17 APR 2025 to 15 MAY 2025