

|  |                        |   |
|--|------------------------|---|
| WAAS<br>CH <b>66024</b><br><b>W14A</b> | APP CRS<br><b>140°</b> | Rwy Idg<br>TDZE <b>60</b><br>Apt Elev <b>62</b> |
|--|------------------------|---|

# RNAV (GPS) RWY 14

SEBRING RGNL (SEIF)

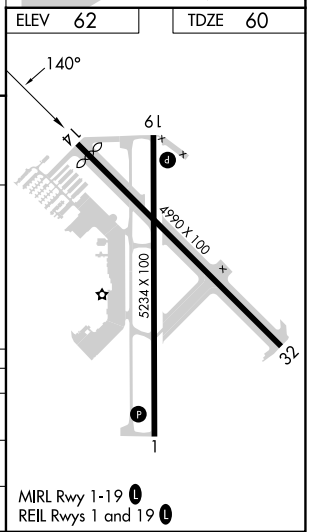
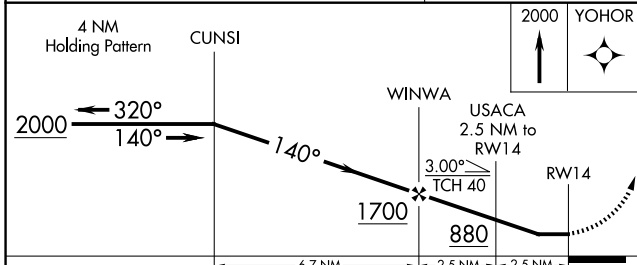
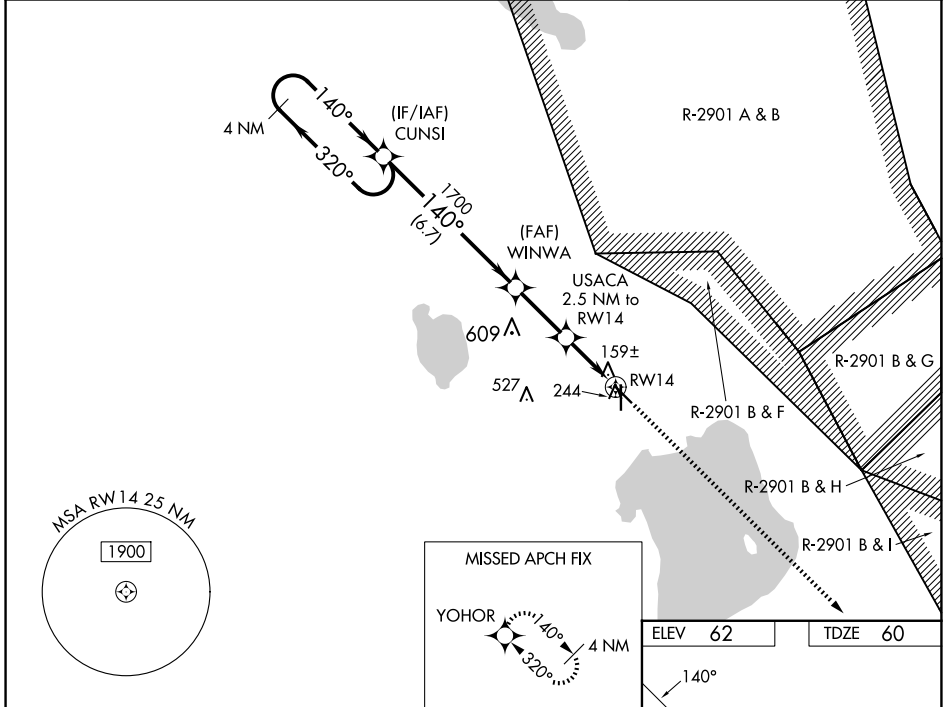
RNP APCH-GPS

RADAR required for procedure entry.

- ▼ Rwy 14 helicopter visibility reduction below 1 SM NA. When local altimeter setting not received, use Vero Beach Muni altimeter setting and increase all MDAs 140 feet; increase LP visibility Cat C and D 3/8 SM, LNAV visibility Cat C and D 1/2 SM; increase Circling visibility Cat C 1/2 SM and Cat D 1/4 SM. Straight-in Rwy 14 NA at night, Circling Rwy 14 NA at night.
- ▲ MISSED APPROACH: Climb to 2000 direct YOHOR and hold.

MISSED APPROACH:  
Climb to 2000 direct  
YOHOR and hold.

|                          |                                     |                               |
|--------------------------|-------------------------------------|-------------------------------|
| AWOS-3<br><b>119.475</b> | MIAMI CENTER<br><b>134.55 257.7</b> | UNICOM<br><b>122.7 (CTAF)</b> |
|--------------------------|-------------------------------------|-------------------------------|



|          |                   |             |           |                 |                 |                 |   |  |
|----------|-------------------|-------------|-----------|-----------------|-----------------|-----------------|---|--|
| CATEGORY | A                 |             | B         |                 | C               |                 | D |  |
| LP MDA   | 420-1 360 (400-1) |             |           |                 |                 |                 |   |  |
| LNAV MDA | 560-1             | 500 (500-1) | 560-1 3/8 |                 | 500 (500-1 3/8) |                 |   |  |
| CIRCLING | 600-1             | 538 (600-1) | 600-1 1/2 | 538 (600-1 1/2) | 880-2 3/4       | 818 (900-2 3/4) |   |  |

SE-3, 17 APR 2025 to 15 MAY 2025

SE-3, 17 APR 2025 to 15 MAY 2025