

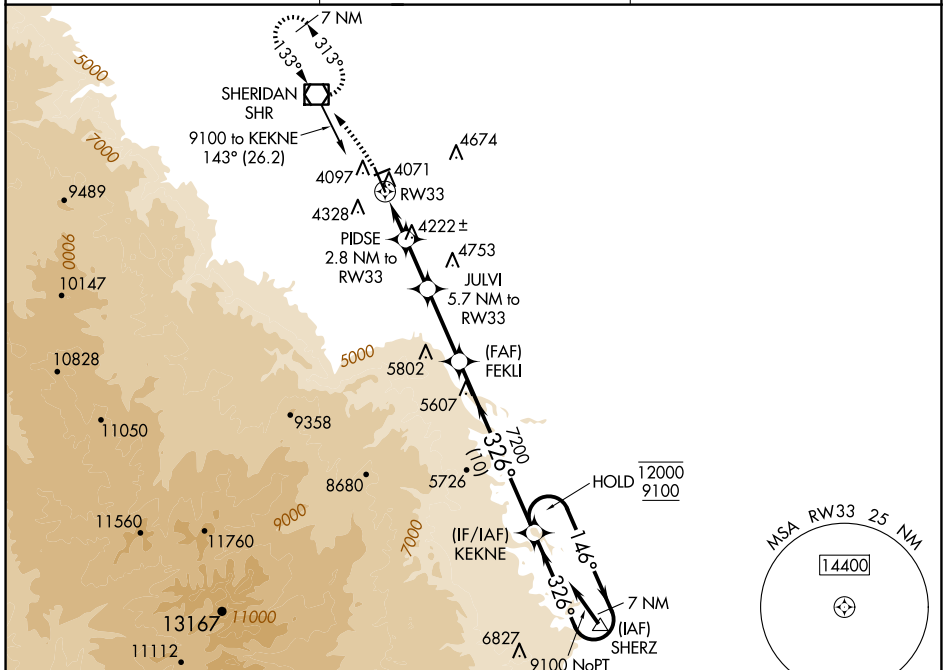
WAAS CH 65699 W33A	APP CRS 326°	Rwy Idg TDZE Apt Elev	8301 3985 4021
--	------------------------	-----------------------------	---

RNAV (GPS) RWY 33

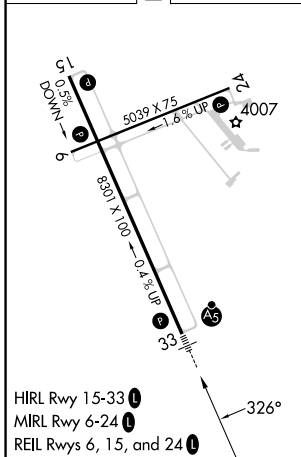
SHERIDAN COUNTY (SHR)

RNP APCH.	MALSR	MISSED APPROACH: Climbing left turn to 7300 direct SHR VOR/DME and hold, continue climb-in-hold to 7300.
<p>Circling to Rwy 24 NA at night. Baro-VNAV NA. When local altimeter setting not received, procedure NA. -19°C</p>		

ASOS 135.175	SALT LAKE CENTER 127.75 351.9	UNICOM 123.0 (CTAF)
------------------------	---	-------------------------------



ELEV 4021	D	TDZE 3985
-----------	----------	-----------



7300	SHR	PIDSE	JULVI	FEKLI	KEKNE	7 NM Holding Pattern
		2.8 NM to RW33	5.7 NM to RW33	7200	7 NM	
		*1.1 NM to RW33			146°	12000
					326°	9100
						GP 3.00°
						TCH 55
		1.1	1.7 NM	2.9 NM	4.3 NM	10 NM
CATEGORY	A	B	C	D		
LPV DA	DA	4205-1/2	220 (200-1/2)			
LNAV/VNAV DA	DA	4380-3/4	395 (400-3/4)			
LNAV MDA	4380-1/2	395 (400-1/2)	4380-5/8	395 (400-5/8)		
C CIRCLING	4600-1	4640-1	4860-2 1/2	5220-3		
	579 (600-1)	619 (700-1)	839 (900-2 1/2)	1199 (1200-3)		

NW-1, 17 APR 2025 to 15 MAY 2025

NW-1, 17 APR 2025 to 15 MAY 2025