

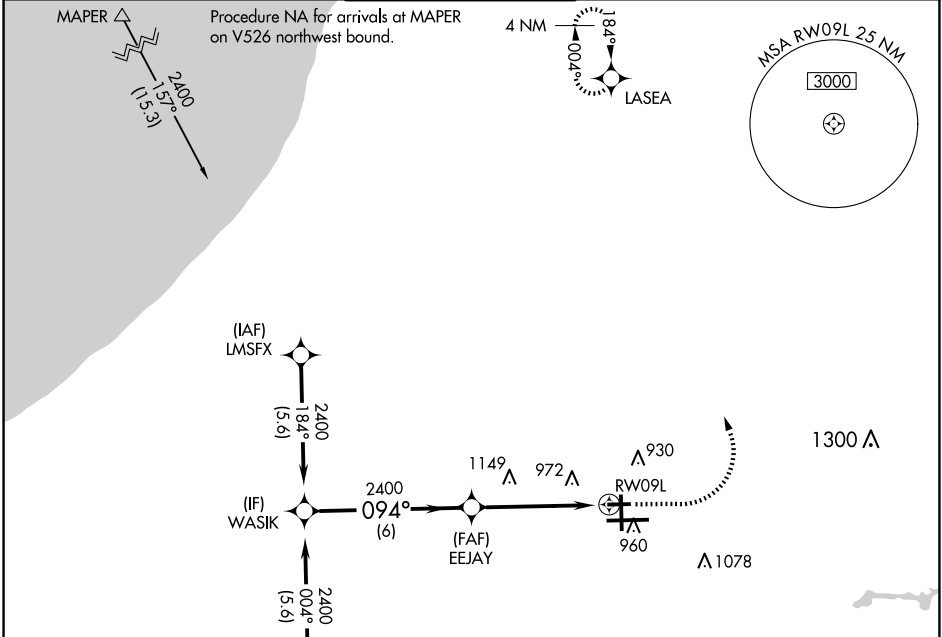
WAAS CH 70542 W09A	APP CRS 094°	Rwy Idg TDZE 788 Apt Elev 798	4300 788 798
--	------------------------	---	---

RNAV (GPS) RWY 9L

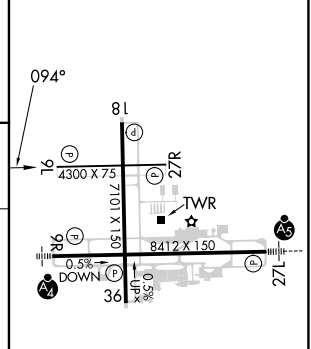
SOUTH BEND INTL (SBN)

RNP APCH - GPS.	MISSED APPROACH: Climb to 2000 then climbing left turn to 2400 direct LASEA and hold.
Rwy 9L helicopter visibility reduction below 3/4 SM NA. Circling Rwy 27R NA at night.	

ATIS 120.675	SOUTH BEND APP CON * 118.55 257.8	SOUTH BEND TOWER * 135.675 (CTAF) 0 257.8	GND CON 121.7	CLNC DEL 121.9
------------------------	---	---	-------------------------	--------------------------



ELEV 798	D	TDZE 788
----------	---	----------



CATEGORY	A	B	C	D
LP MDA	1240-1	452 (500-1)	1240-1 3/8	452 (500-1 3/8)
LNAV MDA	1240-1	452 (500-1)	1240-1 3/8	452 (500-1 3/8)
CIRCLING	1280-1	482 (500-1)	1440-1 3/4	1500-2 1/4

HIRL Rwy 9R-27L	
MIRL Rwy 18-36	
MIRL Rwy 9L-27R	

EC-2, 17 APR 2025 to 15 MAY 2025

EC-2, 17 APR 2025 to 15 MAY 2025