

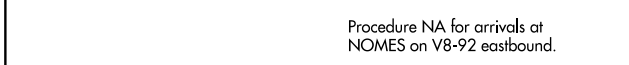
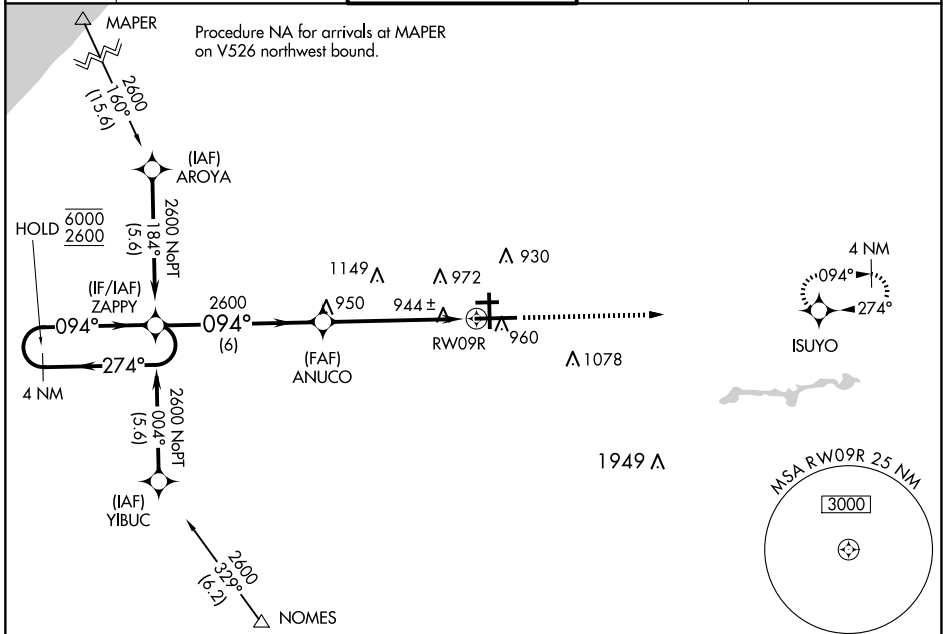
WAAS CH 60908 W09B	APP CRS 094°	Rwy Idg 8412
		TDZE 790
		Apt Elev 798

RNAV (GPS) RWY 9R

SOUTH BEND INTL (SBN)

RNP APCH - GPS.		MALSF	MISSED APPROACH: Climb to 2600 direct ISUYO and hold.
⚠ For uncompensated Baro-VNAV systems, LNAV/VNAV NA below -19°C or above 54°C. ⚠ Circling Rwy 27R NA at night. Rwy 9R helicopter visibility reduction below RVR 4000 NA. ⚠ For inop ALS, increase LPV all Cats visibility to RVR 5500 and LNAV Cat C/D to RVR 6000.			

ATIS 120.675	SOUTH BEND APP CON ★ 118.55 257.8	SOUTH BEND TOWER ★ 135.675 (CTAF) 257.8	GND CON 121.7	CLNC DEL 121.9
------------------------	---	---	-------------------------	--------------------------



ELEV 798	TDZE 790
----------	----------

8L

27R

9R

27L

TWR

4300 X 75

7101 X 150

8412 X 150

0.5% DOWN

0.5% UP

094°

CIRCLING	1280-1	482 (500-1)	1440-1¾	642 (700-1¾)	1500-2¼	702 (800-2¼)
----------	--------	-------------	---------	--------------	---------	--------------

HIRL Rwy 9R-27L

MIRL Rwy 18-36

MIRL Rwy 9L-27R

EC-2, 17 APR 2025 to 15 MAY 2025

EC-2, 17 APR 2025 to 15 MAY 2025