

HI-ILS or LOC Z RWY 4L

LOC I-SSC 110.1	APCH CRS 043°	Rwy Idg TDZE Arprt Elev	4L 10,014 240 241	4R 8014 236 241
---------------------------	-------------------------	-------------------------------	---	---

JAL-409 [USAF]

SHAW AFB (KSSC)

RADAR or DME Required.

* When ALS inop, increase vis to 1 ½ miles.



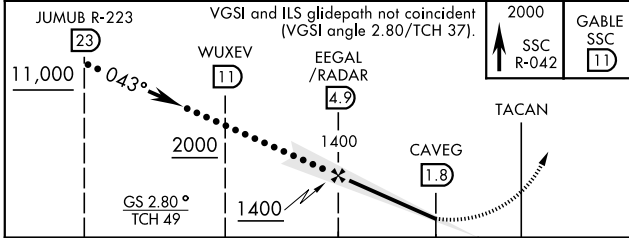
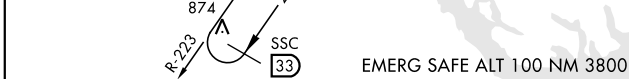
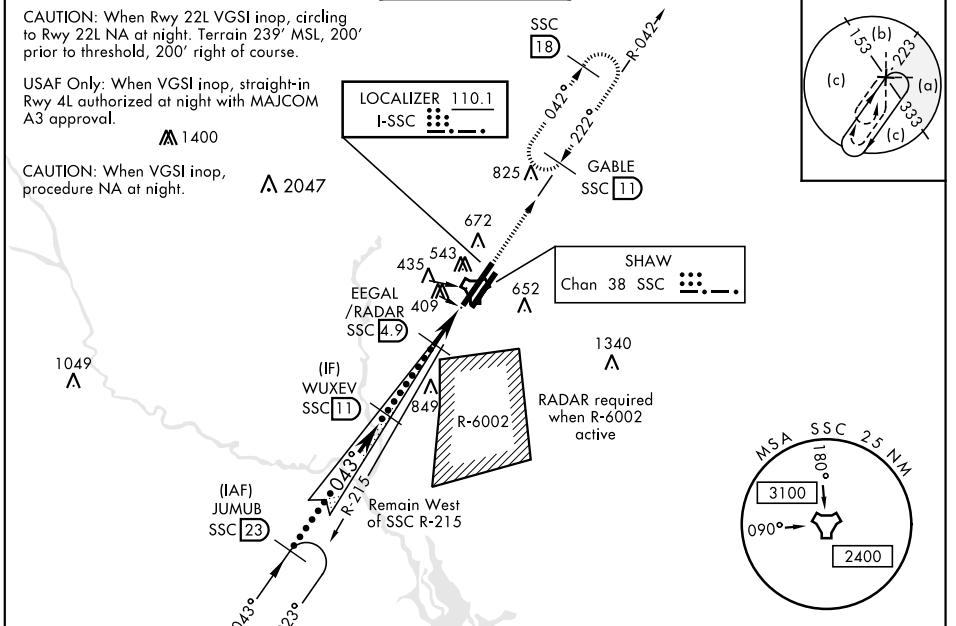
MISSED APPROACH: Climbing to 2000, intercept SSC TACAN R-042 to GABLE and hold.

ATIS ★ 132.125 270.1	SHAW APP CON 125.4 318.1	SHAW TOWER ★ 126.65 254.25	GND CON 126.1 275.8	CLNC DEL 126.1 275.8
--------------------------------	------------------------------------	--------------------------------------	-------------------------------	--------------------------------

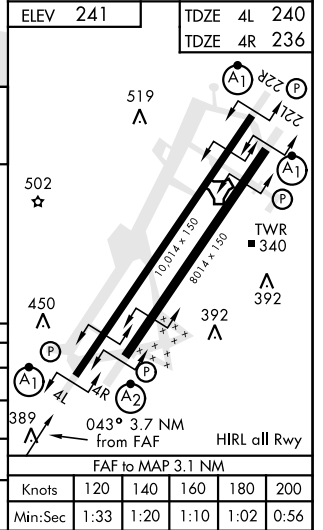
CAUTION: When Rwy 22L VGSi inop, circling to Rwy 22L NA at night. Terrain 239' MSL, 200' prior to threshold, 200' right of course.

USAF Only: When VGSi inop, straight-in Rwy 4L authorized at night with MAJCOM A3 approval.

CAUTION: When VGSi inop, procedure NA at night.



CATEGORY	C	D	E
S-ILS 4L *	490/50	250	(300-1)
S-LOC 4L *	780/55	540	(600-1)
SIDESTEP * 4R	780-1 3/8	544	(600-1 3/8)
CIRCLING	1000-2 1/4 759 (800-2 1/4)	1000-2 1/2 759 (800-2 1/2)	1000-2 3/4 759 (800-2 3/4)



HI-ILS or LOC Z RWY 4L

SE-2, 17 APR 2025 to 15 MAY 2025

SE-2, 17 APR 2025 to 15 MAY 2025