

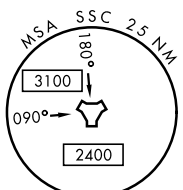
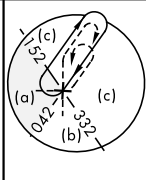
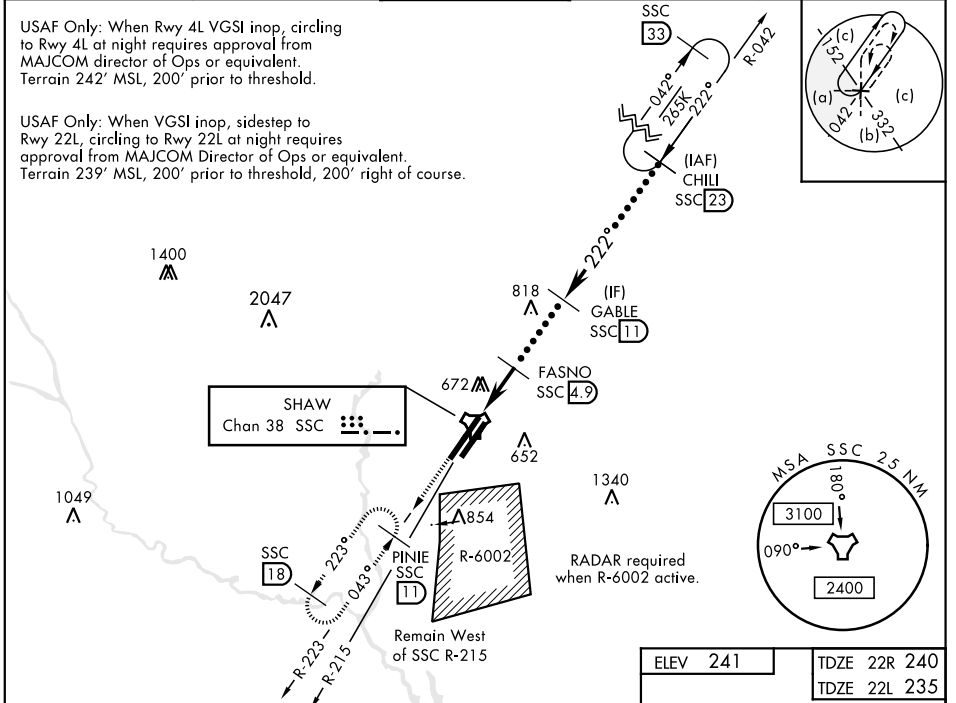
HI-TACAN Z RWY 22R

TACAN SSC Chan 38	APCH CRS 222°	22R Rwy ldg 10,014 TDZE 240 Arpr Elev 241	22L 8014 235 241	JAL-409 [USAF]	SHAW AFB (KSSC)
-----------------------------	-------------------------	---	--	----------------	-----------------

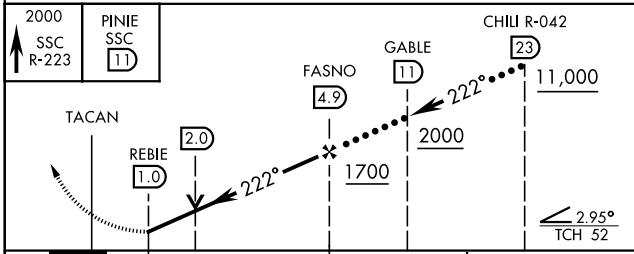
* When ALS inop, increase vis to 1½ miles.
 ** When ALS inop, increase vis to 1¾ miles.

MISSED APPROACH: Climbing to 2000, intercept SSC TACAN R-223 to PINIE and hold.

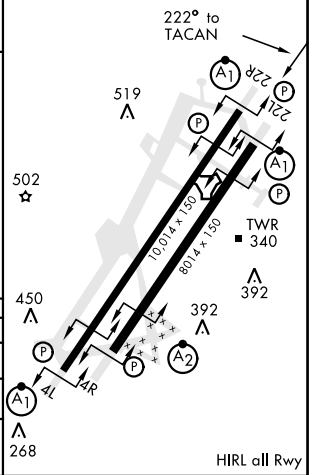
ATIS ★ 132.125 270.1	SHAW APP CON 125.4 318.1	SHAW TOWER ★ 126.65 254.25	GND CON 126.1 275.8	CLNC DEL 126.1 275.8
--------------------------------	------------------------------------	--------------------------------------	-------------------------------	--------------------------------



EMERG SAFE ALT 100 NM 3800



ELEV 241	TDZE 22R 240
	TDZE 22L 235



CATEGORY	C	D	E
S-22R*	760/55	520 (600-1)	
SIDESTEP 22L**	760/55	505 (600-1)	
CIRCLING	1000-2¼ 759 (800-2¼)	1000-2½ 759 (800-2½)	1000-2¾ 759 (800-2¾)

HI-TACAN Z RWY 22R

SE-2, 17 APR 2025 to 15 MAY 2025

SE-2, 17 APR 2025 to 15 MAY 2025