

# HI-TACAN Z RWY 4L

TACAN SSC Chan <b>38</b>	APCH CRS <b>043°</b>	Rwy Idg <b>10,014</b>	4L TDZE <b>240</b>	4R TDZE <b>236</b>
		Arprt Elev <b>241</b>		

JAL-409 [USAF]

SHAW AFB (KSSC)

**V** \* When ALS inop, increase vis to 1 ½ miles.

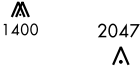


MISSED APPROACH: Climbing to 2000, intercept SSC TACAN R-042 to GABLE and hold.

ATIS ★ <b>132.125 270.1</b>	SHAW APP CON <b>125.4 318.1</b>	SHAW TOWER ★ <b>126.65 254.25</b>	GND CON <b>126.1 275.8</b>	CLNC DEL <b>126.1 275.8</b>
--------------------------------	------------------------------------	--------------------------------------	-------------------------------	--------------------------------

When VGSI inop, procedure NA at night. Terrain 242' MSL, 200' prior to threshold, 816' left of course.

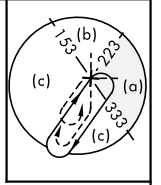
USAF Only: When VGSI inop, straight in Rwy 4L authorized at night with MAJCOM A3 approval.



CAUTION: When Rwy 22L VGSI inop, circling to Rwy 22L NA at night. Terrain 239' MSL, 200' prior to threshold, 200' right of course.

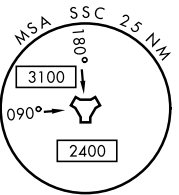


SHAW Chan 38 SSC

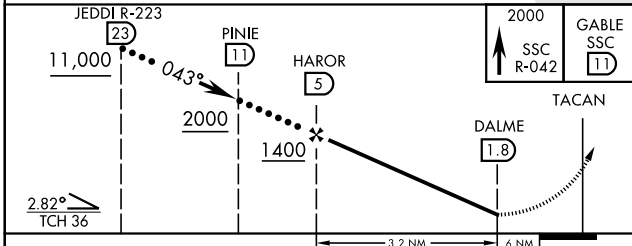


Remain West of SSC R-215

RADAR required when R-6002 active

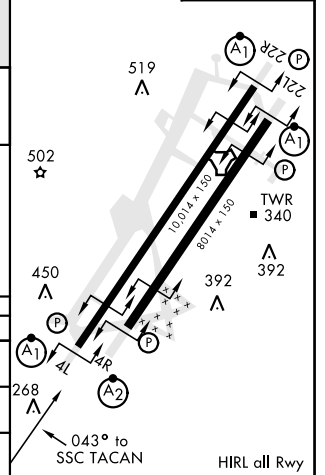


EMERG SAFE ALT 100 NM 3800



ELEV 241	TDZE 4L 240
	TDZE 4R 236

CATEGORY	C	D	E
S-4L *	800/60	560 (600-1½)	
SIDESTEP 4R *	800-1½	564 (600-1½)	
CIRCLING	1000-2¼ 759 (800-2¼)	1000-2½ 759 (800-2½)	1000-2¾ 759 (800-2¾)



# HI-TACAN Z RWY 4L

SE-2, 17 APR 2025 to 15 MAY 2025

SE-2, 17 APR 2025 to 15 MAY 2025