

SUMTER, SOUTH CAROLINA

# ILS or LOC Y RWY 22R

LOC I-JWU <b>108.7</b>	APCH CRS <b>223°</b>	Rwy Ldg <b>10,014</b>	22R TDZE <b>240</b>	22L TDZE <b>235</b>
		Arprt Elev <b>241</b>	<b>241</b>	<b>241</b>

AL-409 [USAF]

SHAW AFB (KSSC)

RADAR or DME Required.

▲ \* When ALS inop, increase RVR to 40 and vis to ¾ mile.  
 \*\* When ALS inop, increase CAT AB RVR to 55 and vis to 1 mile, CAT CDE vis to 1¼ miles.



MISSED APPROACH: Climbing to 2000, intercept SSC TACAN R-223 to PINIE and hold.

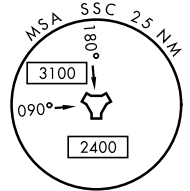
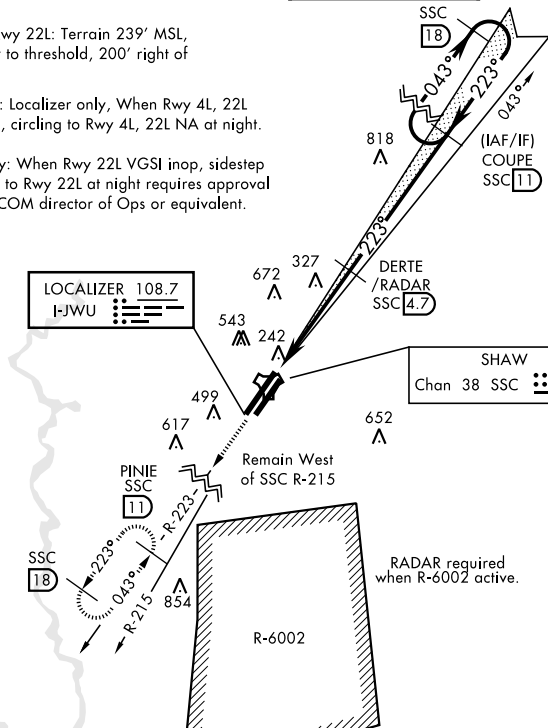
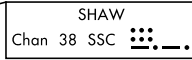
ATIS ★ <b>132.125 270.1</b>	SHAW APP CON <b>125.4 318.1</b>	SHAW TOWER ★ <b>126.65 254.25</b>	GND CON <b>126.1 275.8</b>	CLNC DEL <b>126.1 275.8</b>
--------------------------------	------------------------------------	--------------------------------------	-------------------------------	--------------------------------

Sidestep Rwy 22L: Terrain 239' MSL, 200' prior to threshold, 200' right of course.

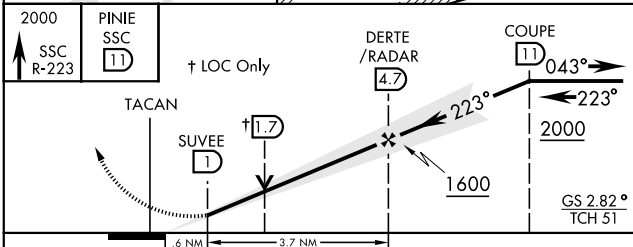
CAUTION: Localizer only, When Rwy 4L, 22L VGSi inop, circling to Rwy 4L, 22L NA at night.

USAF Only: When Rwy 22L VGSi inop, sidestep or circling to Rwy 22L at night requires approval from MAJCOM director of Ops or equivalent.

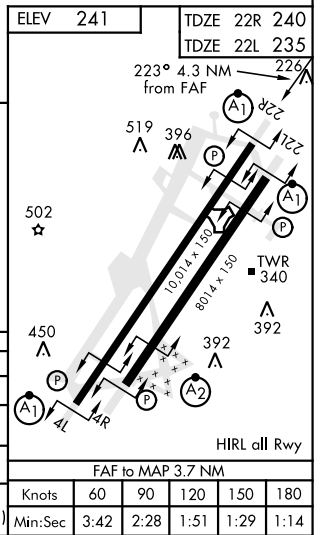
▲  
1573



EMERG SAFE ALT 100 NM 3800



CATEGORY	A	B	C	D	E
S-ILS 22R*	440/24		200	(200-½)	
S-LOC 22R**	660/24	420 (500-½)	660/40	420 (500-¾)	
SIDESTEP ** 22L	660-1	425 (500-1)	660-1¼	425 (500-1¼)	
▲ CIRCLING	820-1 579 (600-1)	880-1 639 (700-1)	1000-2¼ 759 (800-2¼)	1000-2½ 759 (800-2½)	1000-2¾ 759 (800-2¾)



SUMTER, SOUTH CAROLINA  
Amdt 1 10OCT19

33° 58' N-80° 28' W

SHAW AFB (KSSC)

# ILS or LOC Y RWY 22R

SE-2, 17 APR 2025 to 15 MAY 2025

SE-2, 17 APR 2025 to 15 MAY 2025

FAF to MAP 3.7 NM					
Knots	60	90	120	150	180
Min:Sec	3:42	2:28	1:51	1:29	1:14