

SUMTER, SOUTH CAROLINA

ILS or LOC Y RWY 4L

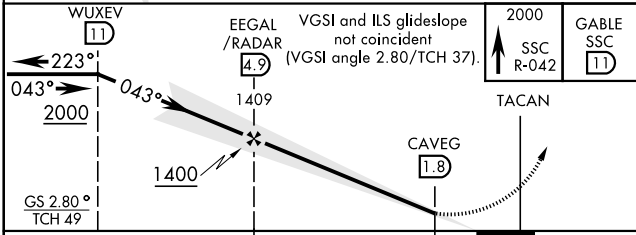
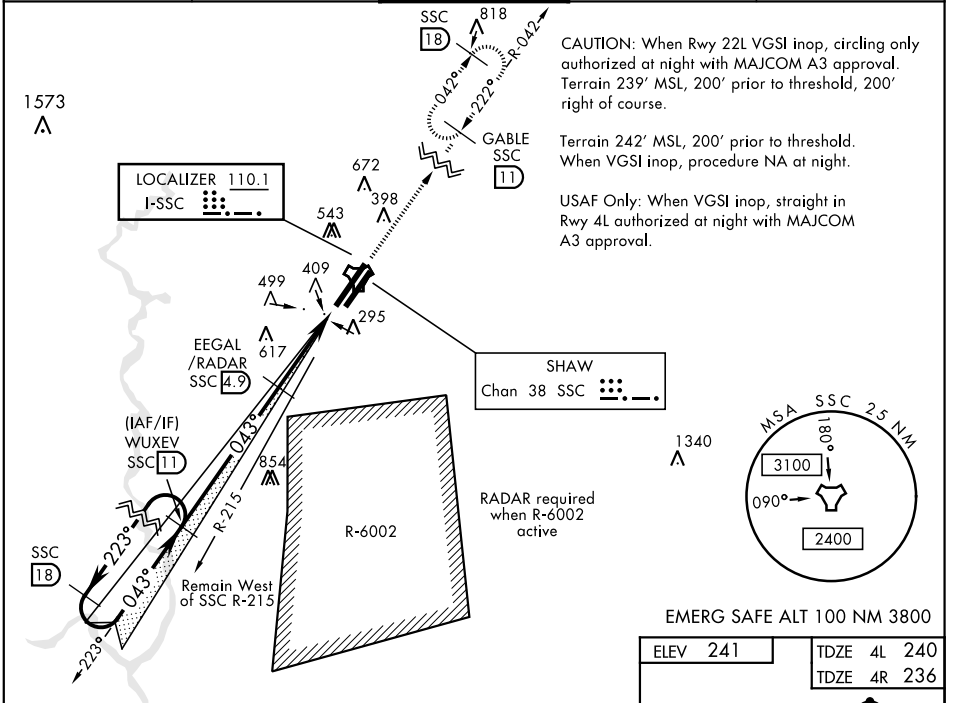
LOC I-SSC 110.1	APCH CRS 043°	Rwy Idg TDZE Arprt Elev	4L 10,014 240 241	4R 8014 236 241
---------------------------	-------------------------	-------------------------------	---	---

AL-409 [USAF]

SHAW AFB (KSSC)

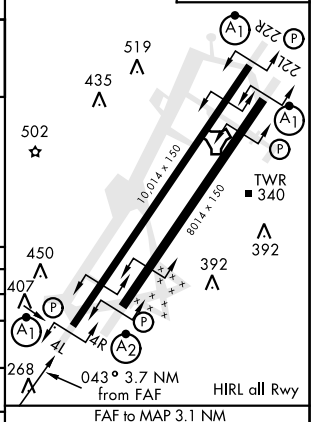
RADAR or DME Required.		ALSIF-1 	MISSED APPROACH: Climbing to 2000, intercept SSC TACAN R-042 to GABLE and hold.
* When ALS inop, increase CAT AB RVR to 55 and vis to 1 mile, CAT CDE vis to 1 1/2 miles.			

ATIS ★ 132.125 270.1	SHAW APP CON 125.4 318.1	SHAW TOWER ★ 126.65 254.25	GND CON 126.1 275.8	CLNC DEL 126.1 275.8
--------------------------------	------------------------------------	--------------------------------------	-------------------------------	--------------------------------



ELEV 241	TDZE 4L 240
	TDZE 4R 236

CATEGORY	A	B	C	D	E
S-ILS 4L	490/50		250	(300-1)	
S-LOC 4L *	780/50	540 (600-1)	780/55	540	(600-1)
SIDESTEP 4R *	780/50	544 (600-3/4)	780-1 1/8	544	(600-1 1/8)
CIRCLING	820-1	880-1	1000-2 1/4	1000-2 1/2	1000-2 3/4
	579 (600-1)	639 (700-1)	759 (800-2 1/4)	759 (800-2 1/2)	759 (800-2 3/4)



FAF to MAP 3.1 NM	Knots	60	90	120	150	180
	Min:Sec	3:06	2:04	1:33	1:14	1:02

SUMTER, SOUTH CAROLINA

33° 58' N-80° 28' W

SHAW AFB (KSSC)

Amtd 1 10OCT19

ILS or LOC Y RWY 4L

SE-2, 17 APR 2025 to 15 MAY 2025

SE-2, 17 APR 2025 to 15 MAY 2025