

(ADYMS.ADYMS3) 22027

ADYMS THREE ARRIVAL (RNAV)

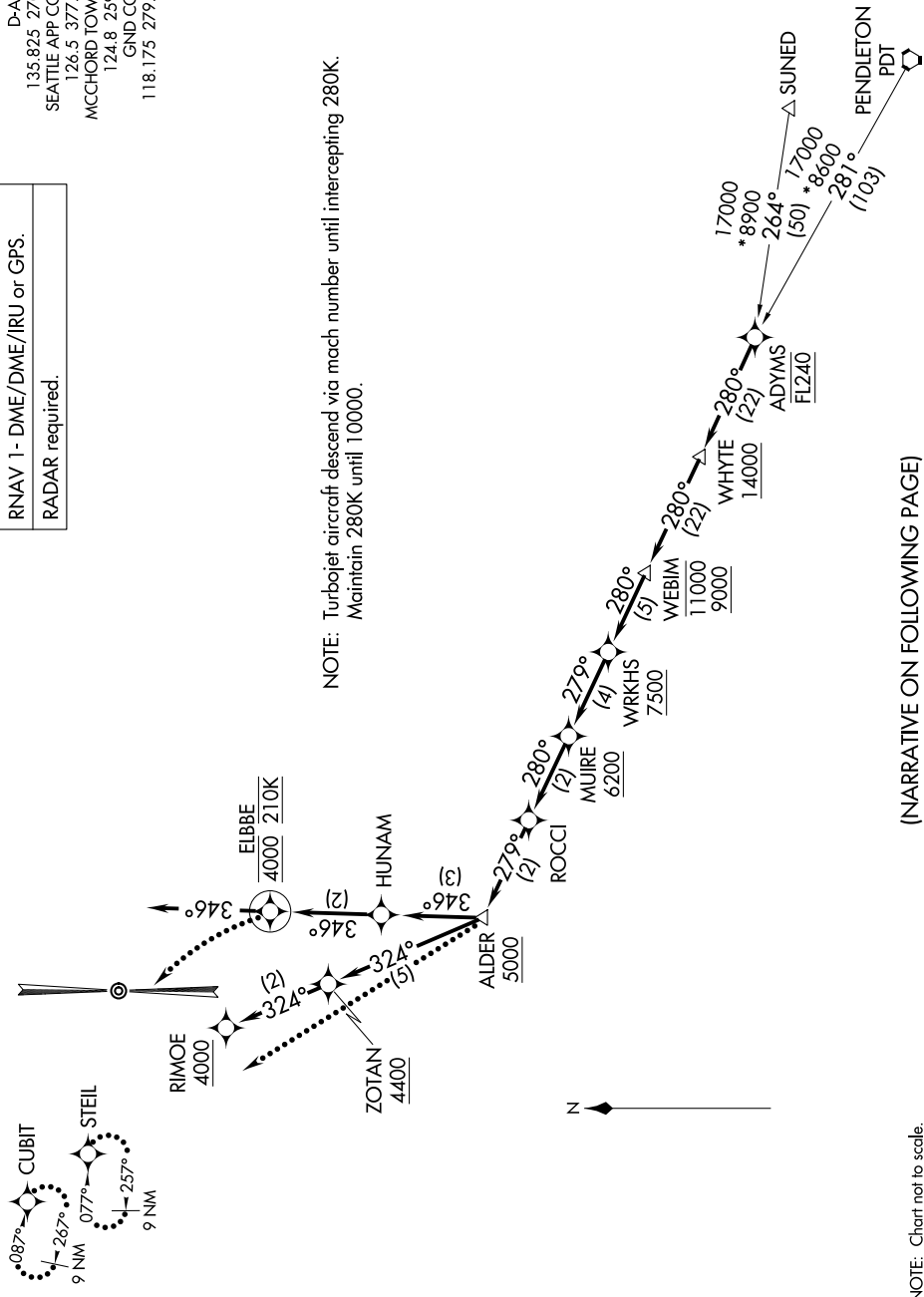
MCCHORD FLD (JOINT BASE LEWIS-MCCHORD) (KTCM)
AL-414 (FAA) TACOMA, WASHINGTON

D-ATIS
135.825 270.1
SEATTLE APP CON
126.5 377.15
MCCHORD TOWER
124.8 259.3
GND CON
118.175 279.65

RNAV 1- DME/DME/IRU or GPS.
RADAR required.

NW-1, 17 APR 2025 to 15 MAY 2025

NOTE: Turbojet aircraft descend via mach number until intercepting 280K.
Maintain 280K until 10000.



(NARRATIVE ON FOLLOWING PAGE)

NOTE: Chart not to scale.

NW-1, 17 APR 2025 to 15 MAY 2025

ADYMS THREE ARRIVAL (RNAV)

(ADYMS.ADYMS3) 27JAN22

MCCHORD FLD (JOINT BASE LEWIS-MCCHORD) (KTCM)
TACOMA, WASHINGTON