

TACOMA, WASHINGTON

# ILS RWY 34 (CAT II)

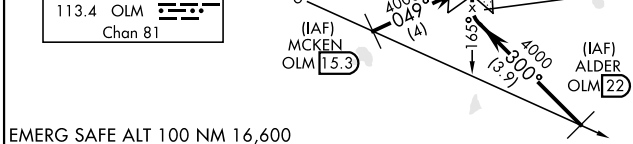
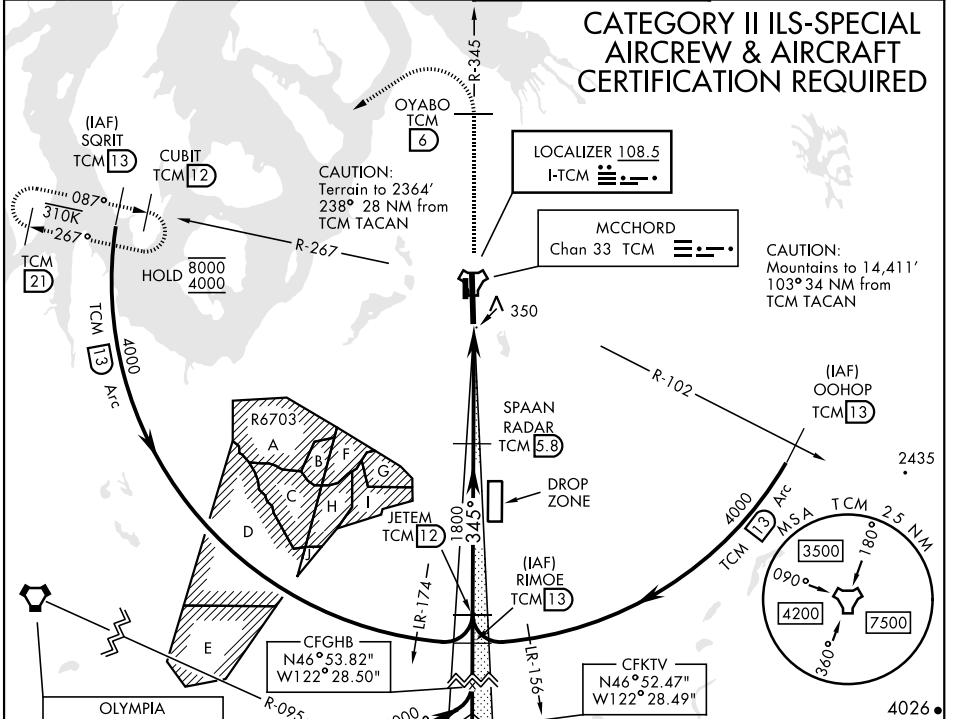
MCCORD FLD (KTCM)

LOC I-TCM <b>108.5</b>	APCH CRS <b>345°</b>	Rwy Idg TDZE Arprt Elev <b>10,108</b> <b>322</b> <b>322</b>
---------------------------	-------------------------	--

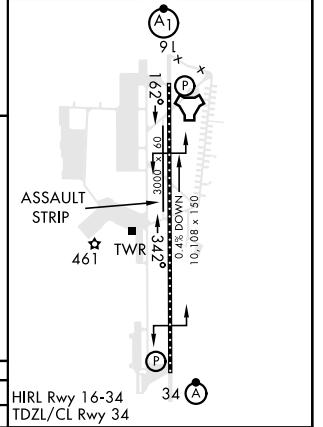
[USAF]

ALSF-2 MISSED APPROACH: Climb to 4000 on TCM TACAN R-345 to OYABO, then turn left via 215° course to intercept TCM R-267 and hold, continue climb in hold to 4000. Cross OYABO at or above 3000.

ATIS <b>135.825 270.1</b>	SEATTLE APP CON <b>126.5 377.15</b>	TOWER <b>124.8 259.3</b>	GND CON <b>118.175 279.65</b>
------------------------------	--	-----------------------------	----------------------------------



ELEV 322	TDZE 322
----------	----------



CATEGORY	A	B	C	D	E
S-ILS 34	RA 139/12		100	DA 422	

TACOMA, WASHINGTON

47°08'N-122°29'W

MCCORD FLD (KTCM)

Amdt 4 10SEP20

# ILS RWY 34 (CAT II)

NW-1, 17 APR 2025 to 15 MAY 2025

NW-1, 17 APR 2025 to 15 MAY 2025