

TACOMA, WASHINGTON

# ILS or LOC RWY 16

LOC I-MAR <b>109.9</b>	APCH CRS <b>165°</b>	Rwy Idg <b>10,108</b> TDZE <b>286</b> Arprt Elev <b>322</b>
---------------------------	-------------------------	---

[USAF]

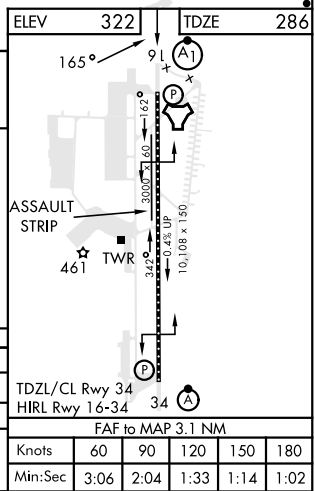
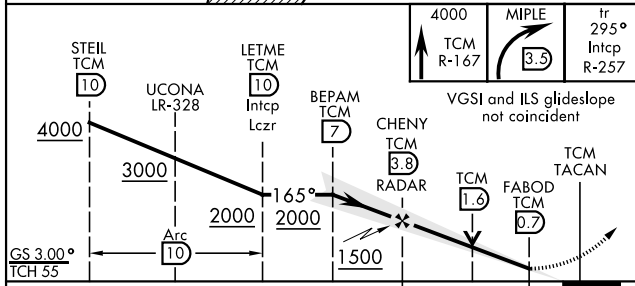
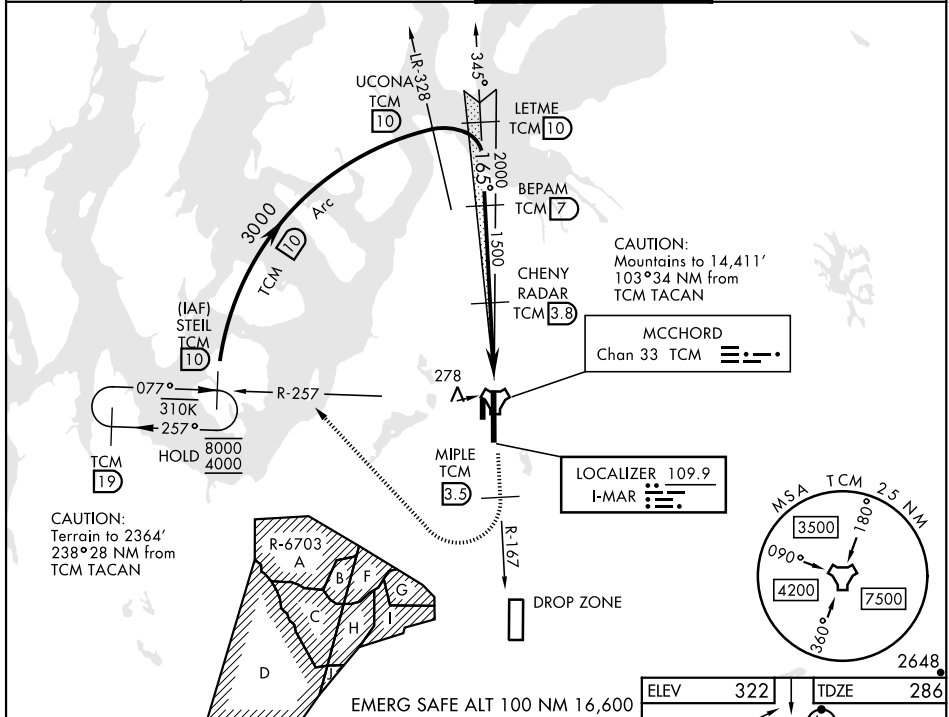
MCCHORD FLD (KTCM)

RADAR or DME required.

ALSIF-1  
A1

**MISSED APPROACH:** Climb to 4000 on TCM TACAN R-167. At 3.5 DME turn right via 295° course to intercept TCM R-257 to STEL and hold. Continue climb in hold to 4000.

ATIS <b>135.825 270.1</b>	SEATTLE APP CON <b>126.5 377.15</b>	TOWER <b>124.8 259.3</b>	GND CON <b>118.175 279.65</b>
------------------------------	--	-----------------------------	----------------------------------



CATEGORY	A	B	C	D	E
S-ILS 16*	601/40		315	(300-¾)	
S-LOC 16**	860/40	574 (600-¾)	860-1¼	574	(600-1¼)
*** CIRCLING	940-1	618 (700-1)	940-1¾ 618 (700-1¾)	940-2 618 (700-2)	1020-2½ 698 (700-2½)

	Knots	60	90	120	150	180
Min:Sec	3:06	2:04	1:33	1:14	1:02	

TACOMA, WASHINGTON  
Amdt 5 20APR23

47°08'N-122°29'W

MCCHORD FLD (KTCM)

# ILS or LOC RWY 16

NW-1, 17 APR 2025 to 15 MAY 2025

NW-1, 17 APR 2025 to 15 MAY 2025