

TACOMA, WASHINGTON

ILS or LOC RWY 34

LOC I-TCM 108.5	APCH CRS 345°	Rwy Idg 10,108
		TDZE 322
		Arprt Elev 322

[USAF]

MCCHORD FLD (KTCM)

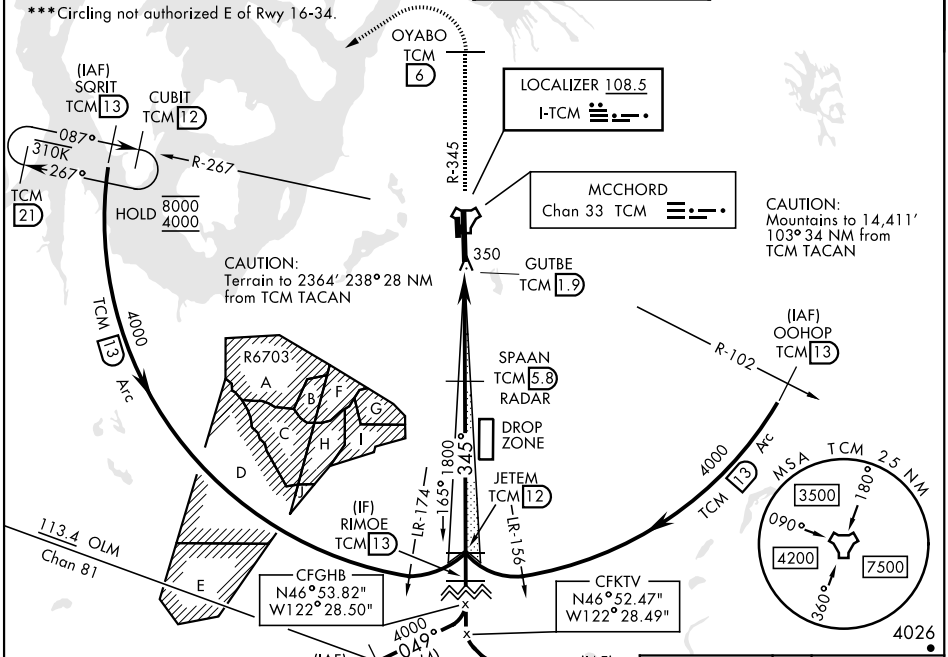
RADAR or DME required.

ALSF-2

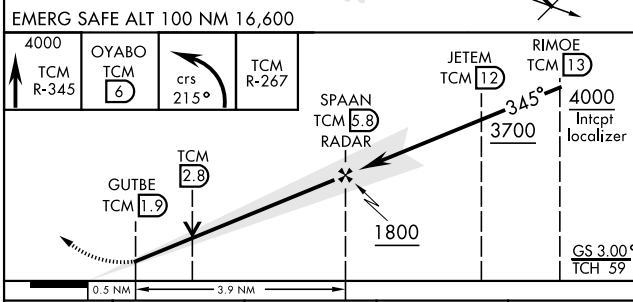
MISSED APPROACH: Climb to 4000 on TCM TACAN R-345 to OYABO, then turn left via 215° course to intercept TCM R-267 to CUBIT and hold, continue climb-hold to 4000. Cross OYABO at or above 3000.

*** When ALS inop, increase RVR to 40, vis to 3/4 mile. When TDZ/CL lights inop increase RVR to 24.
** When ALS inop, increase CAT AB RVR to 55, vis to 1 mile, CAT CD vis to 1 1/2 miles.

ATIS 135.825 270.1	SEATTLE APP CON 126.5 377.15	TOWER 124.8 259.3	GND CON 118.175 279.65
------------------------------	--	-----------------------------	----------------------------------



ELEV 322	TDZE 322
----------	----------



ASSAULT STRIP

TWR 461

34°

FAF to MAP 3.9 NM

Knots	60	90	120	150	180
Min:Sec	3:54	2:36	1:57	1:34	1:18

CATEGORY	A	B	C	D
S-ILS 34*	522/18 200 (200-1/2)			
S-LOC 34**	860/40	538 (600-3/4)	860/55	538 (600-1)
CIRCLING ***	940-1	618 (700-1)	940-1 3/4 618 (700-1 3/4)	940-2 618 (700-2)

TACOMA, WASHINGTON
Amdt 5 30NOV23

47°08'N-122°29'W

MCCHORD FLD (KTCM)

ILS or LOC RWY 34

NW-1, 17 APR 2025 to 15 MAY 2025

NW-1, 17 APR 2025 to 15 MAY 2025