

MOCAA FOUR DEPARTURE (RNAV)

NW-1, 17 APR 2025 to 15 MAY 2025

DEPARTURE ROUTE DESCRIPTION

TAKEOFF RUNWAY 16: Climb on heading 165° to 3000, then climbing left turn direct to cross **ALDER** at or above 5800 and at or below 9000, then on track 111° to MOCAA, thence

TAKEOFF RUNWAY 34: Climb on heading 345° to 3000, then climbing left turn direct **NEECE**, then on track 188° to cross **NISQA** at 4000, then on track 129° to cross **KUSCE** at or above 4000 and at or below 250K, then on track 086° to cross **ALDER** at or above 5800 and at or below 9000, then on track 111° to MOCAA, thence

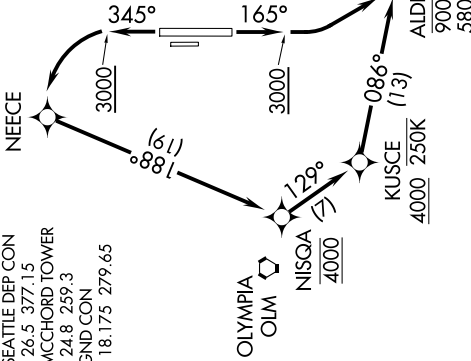
. . . . (transition). Maintain 9000, expect filed altitude five minutes after departure.

BAKER CITY TRANSITION (MOCAA4.BKE)

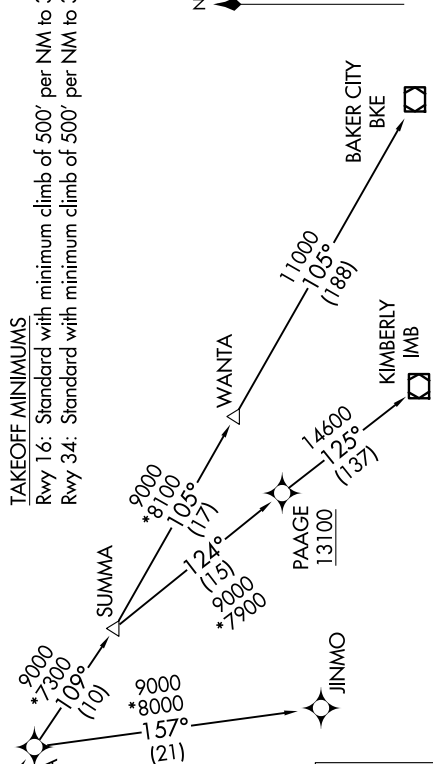
JINMO TRANSITION (MOCAA4.JINMO)

KIMBERLY TRANSITION (MOCAA4.IMB)

- D-ATIS 135.825 270.1
- SEATTLE DEP CON 126.5 377.15
- MCCHORD TOWER 124.8 259.3
- GND CON 118.175 279.65



TAKEOFF MINIMUMS
 Rwy 16: Standard with minimum climb of 500' per NM to 3000.
 Rwy 34: Standard with minimum climb of 500' per NM to 3000.



NOTE: RNAV 1.
 NOTE: GPS required.
 NOTE: Chart not to scale.

TOP ALTITUDE:
BAKER CITY and JINMO Transitions: 9000
KIMBERLY Transition: 13100

NW-1, 17 APR 2025 to 15 MAY 2025