

ATIS  
 135.825 270.1  
 GND CON  
 118.175 279.65  
 TOWER  
 124.8 259.3  
 SEATTLE DEP CON  
 126.5 377.15

If unable to make ATC charted crossing restriction advise ATC prior to departure.

### RADAR REQUIRED

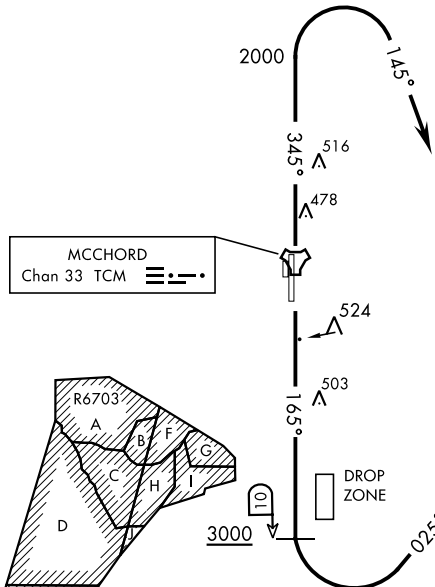
Maximum 250 KIAS

Radar vectors required within 10 NM after departure.



SEATTLE  
 116.8 SEA  
 Chan 115

L-1



MCCHORD  
 Chan 33 TCM

CAUTION: Mountains to 14,411 ft 103° 34 NM from McChord.

OLYMPIA  
 113.4 OLM  
 Chan 81

NW-1, 17 APR 2025 to 15 MAY 2025

NW-1, 17 APR 2025 to 15 MAY 2025

#### DEPARTURE ROUTE DESCRIPTION

**TAKEOFF RWY 16:** Climb on track 165° to cross TCM TACAN 10 DME at or above 3000. Then turn left tracking 025° to expect radar vectors. Maintain ATC assigned altitude.

**TAKEOFF RWY 34:** Climb on track 345° to 2000, then turn right tracking 145° to expect radar vectors. Maintain ATC assigned altitude.