

# RNAV (GPS) RWY 34

APCH CRS <b>345°</b>	Rwy ldg <b>10,108</b>
	TDZE <b>322</b>
	Arprt Elev <b>322</b>

[USAF]

MCCHORD FLD (KTCM)

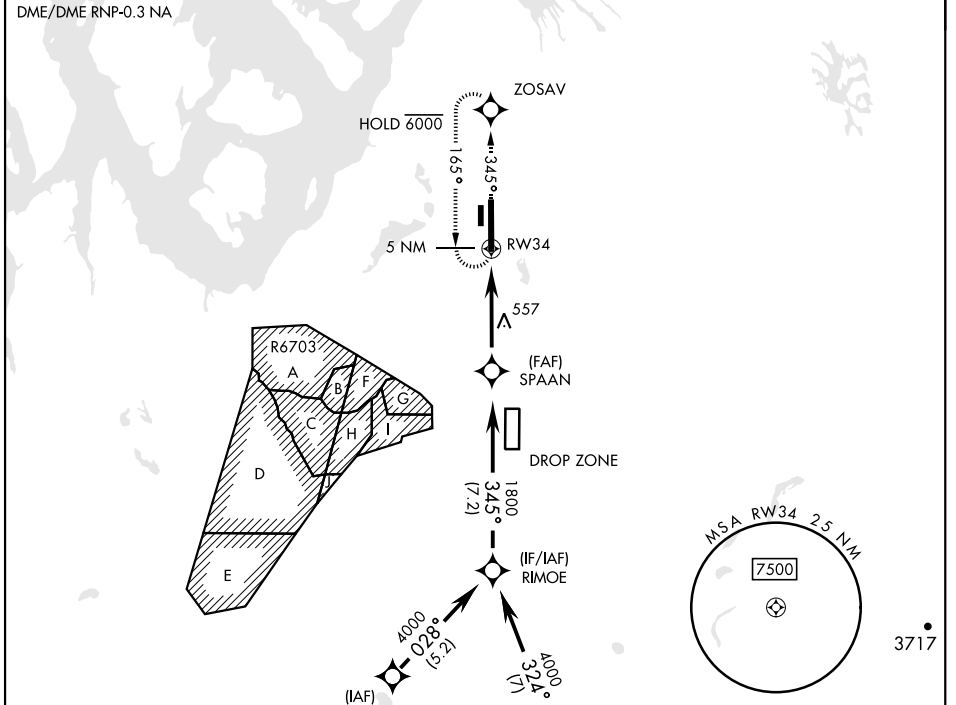
RADAR required.

▼ \* When ALS inop, increase CAT AB RVR to 55, vis to 1 mile; CAT CDE vis to 1½ miles.  
\*\* Circling not authorized E of rwy 16-34.

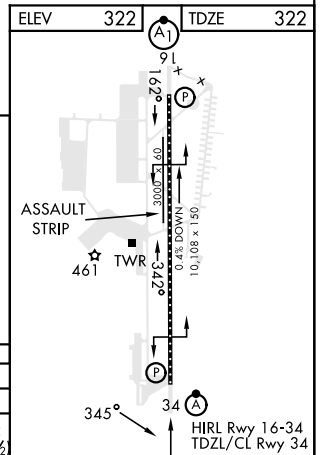
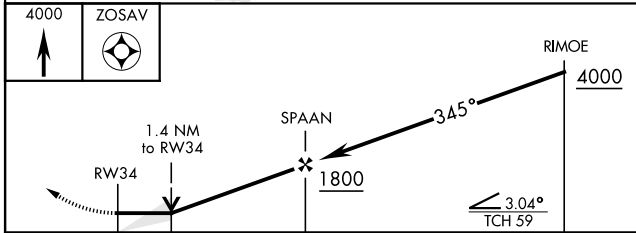


MISSED APPROACH: Climb to 4000 direct ZOSAV and hold, continue climb in hold to 4000.

ATIS <b>135.825 270.1</b>	SEATTLE APP CON <b>126.5 377.15</b>	TOWER <b>124.8 259.3</b>	GND CON <b>118.175 279.65</b>
------------------------------	--	-----------------------------	----------------------------------



EMERG SAFE ALT 100 NM 16,600



CATEGORY	A	B	C	D	E
LNVA MDA *	820/24	498 (500-½)	820/50	498 (500-1)	
** CIRCLING	940-1	618 (700-1)	940-1¾ 618 (700-1¾)	940-2 618 (700-2)	1020-2½ 698 (700-2½)

# RNAV (GPS) RWY 34

NW-1, 17 APR 2025 to 15 MAY 2025

NW-1, 17 APR 2025 to 15 MAY 2025