

DADES TWO ARRIVAL (RNAV) Transition Routes

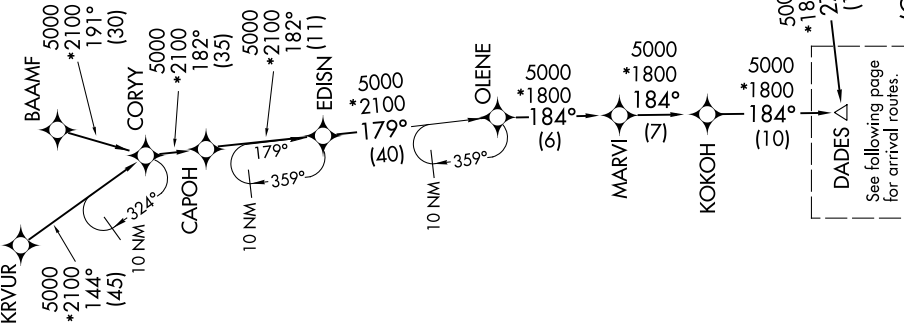
TAMPA, FLORIDA

TAMPA APP CON
135.5 279.6
KMCF ATIS
133.825 270.1
PIE ATIS
134.5
TPA D-ATIS
126.45



RNAV 1- DME/DME/IRU or GPS.
RADAR required.

NOTE: Jet and turboprop aircraft only.
NOTE: KRVUR Transition, EDISN Transition, BEAUX Transition, NICCK Transition, ATC assigned only.



DADES Δ
See following page
for arrival routes.

BAAMF TRANSITION (BAAMF.DADES2)
BEAUX TRANSITION (BEAUX.DADES2)
EDISN TRANSITION (EDISN.DADES2)
HIBAC TRANSITION (HIBAC.DADES2)
KRVUR TRANSITION (KRVUR.DADES2)
NICCK TRANSITION (NICCK.DADES2)

(CONTINUED ON FOLLOWING PAGE) NOTE: Chart not to scale.

DADES TWO ARRIVAL (RNAV) Transition Routes

TAMPA, FLORIDA