

LOC/DME I-TPA <b>110.3</b> Chan <b>40</b>	APP CRS <b>187°</b>	Rwy Idg <b>8300</b> TDZE <b>26</b> Apt Elev <b>26</b>
---	------------------------	---

# ILS RWY 19L (CAT II)

TAMPA INTL (TPA)

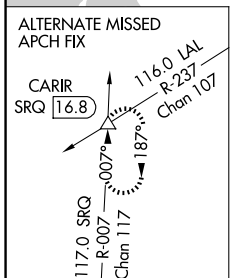
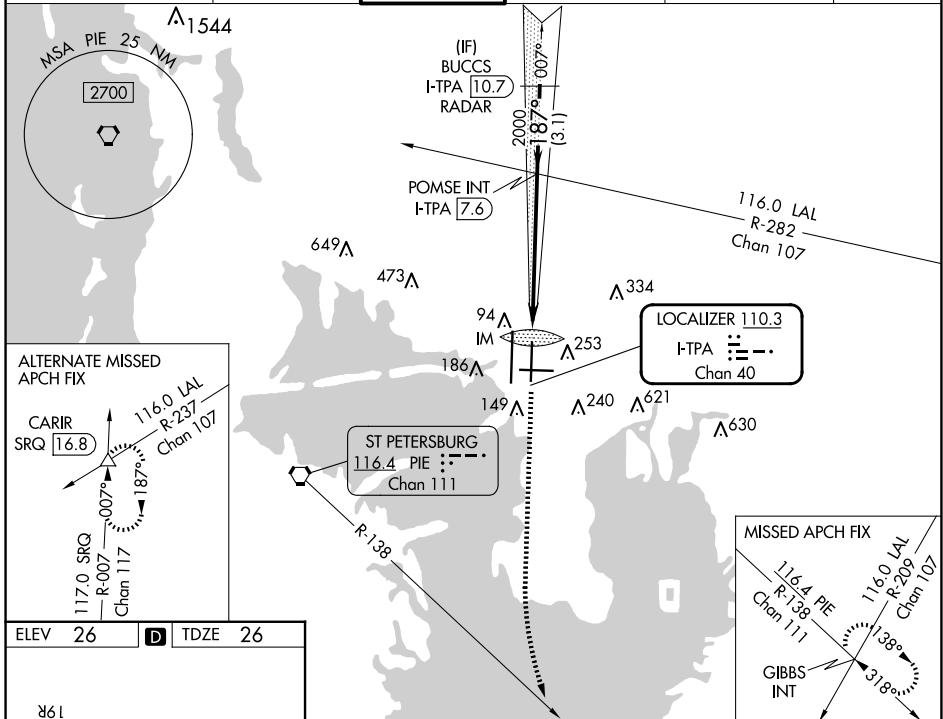
RADAR required for procedure entry.

Simultaneous approach authorized.  
RVR 1000 authorized with specific OPSPEC, MSPEC, or LOA approval and use of autoland or HUD to touchdown.

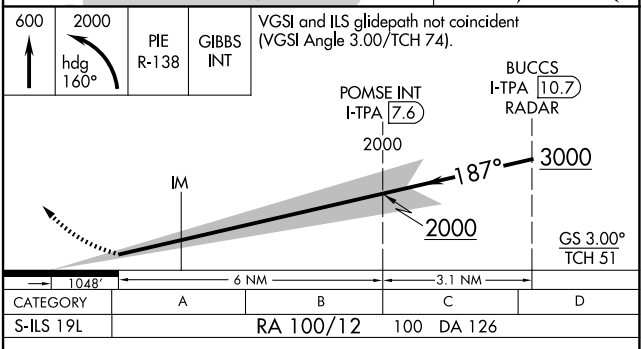
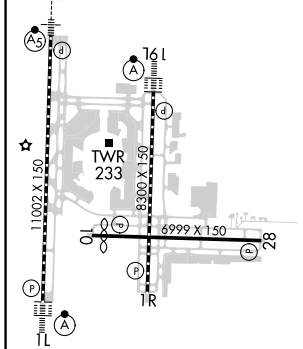
ALSIF-2

MISSED APPROACH: Climb to 600 then climbing left turn to 2000 on heading 160° and on PIE VORTAC R-138 to GIBBS INT and hold.

ARR <b>126.45</b>	D-ATIS <b>128.475</b>	DEP <b>118.5</b>	TAMPA APP CON <b>307.175</b>	TAMPA TOWER <b>119.5 269.4</b>	GND CON <b>121.7 269.4</b>	CLNC DEL <b>133.6</b>	CPDLC
----------------------	--------------------------	---------------------	---------------------------------	-----------------------------------	-------------------------------	--------------------------	-------



ELEV 26	<b>D</b>	TDZE 26
---------	----------	---------



**CATEGORY II ILS - SPECIAL AIRCREW & AIRCRAFT CERTIFICATION REQUIRED**

SE-3, 17 APR 2025 to 15 MAY 2025

SE-3, 17 APR 2025 to 15 MAY 2025