

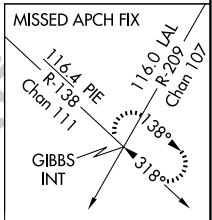
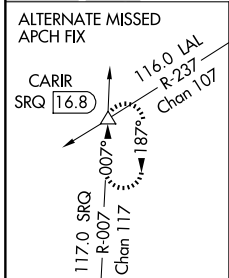
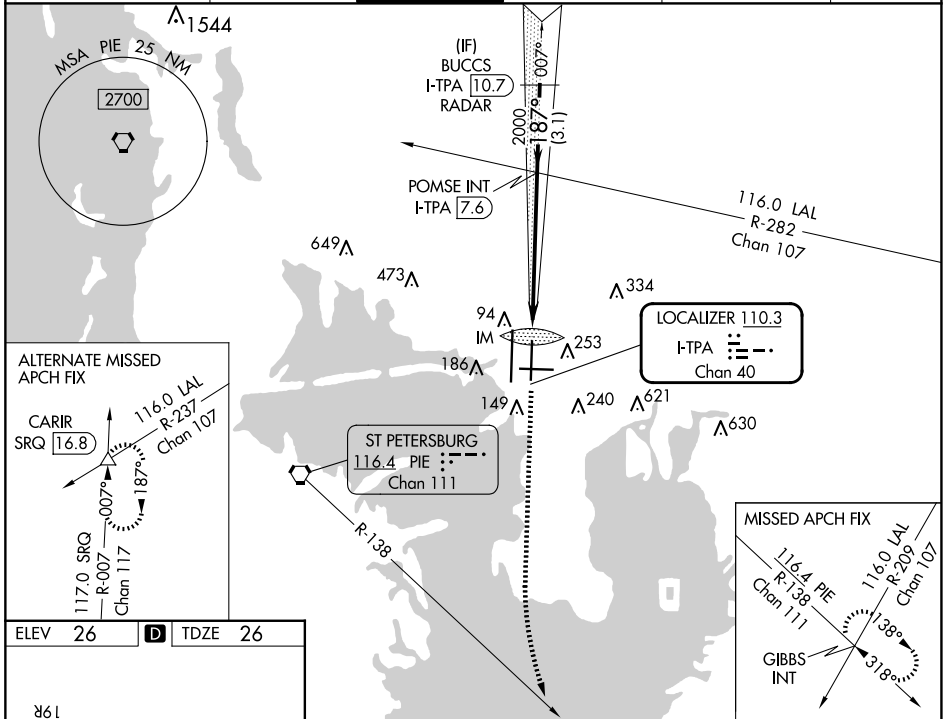
LOC/DME I-TPA 110.3 Chan 40	APP CRS 187°	Rwy Idg 8300 TDZE 26 Apt Elev 26
---	------------------------	---

ILS RWY 19L (SA CAT I)

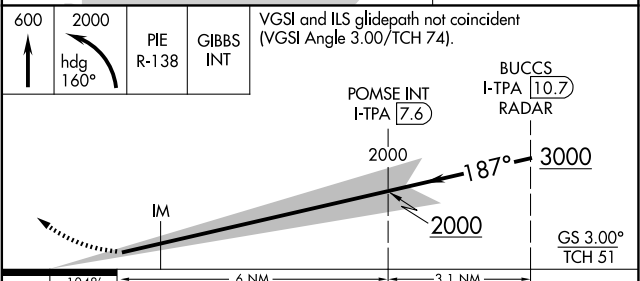
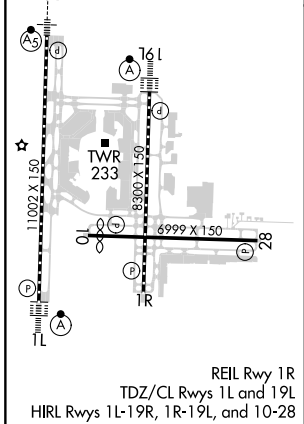
TAMPA INTL (TPA)

RADAR required for procedure entry.		ALSIF-2 	MISSED APPROACH: Climb to 600 then climbing left turn to 2000 on heading 160° and on PIE VORTAC R-138 to GIBBS INT and hold.
Simultaneous approach authorized. Requires specific OPSPEC, MSPEC, or LOA approval.			

ARR 126.45	D-ATIS 128.475	DEP 118.5 307.175	TAMPA APP CON 119.5 269.4	TAMPA TOWER 119.5 269.4	GND CON 121.7 269.4	CLNC DEL 133.6	CPDLC
----------------------	--------------------------	-----------------------------	-------------------------------------	-----------------------------------	-------------------------------	--------------------------	-------



ELEV 26	D	TDZE 26
---------	----------	---------



↑ 600	hdg 160°	PIE R-138	GIBBS INT	VGSI and ILS glidepath not coincident (VGSI Angle 3.00/TCH 74).
1048'		6 NM		3.1 NM
CATEGORY	A	B	C	D
S-ILS 19L	RA 150/14		150	DA 176

SA CATEGORY I ILS- SPECIAL AIRCREW & AIRCRAFT CERTIFICATION REQUIRED

SE-3, 17 APR 2025 to 15 MAY 2025

SE-3, 17 APR 2025 to 15 MAY 2025