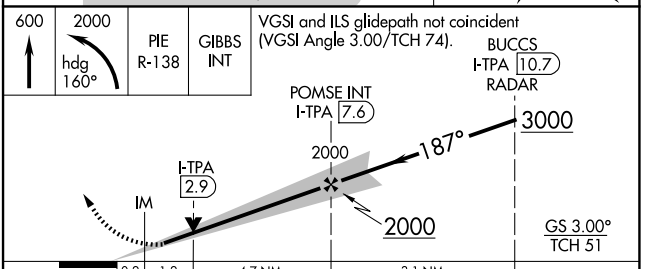
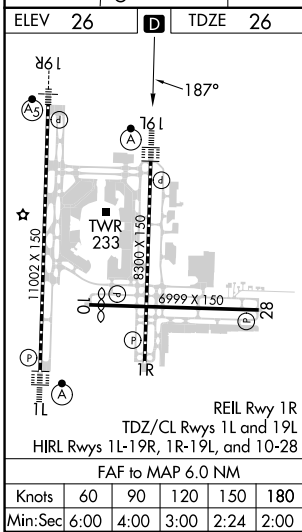
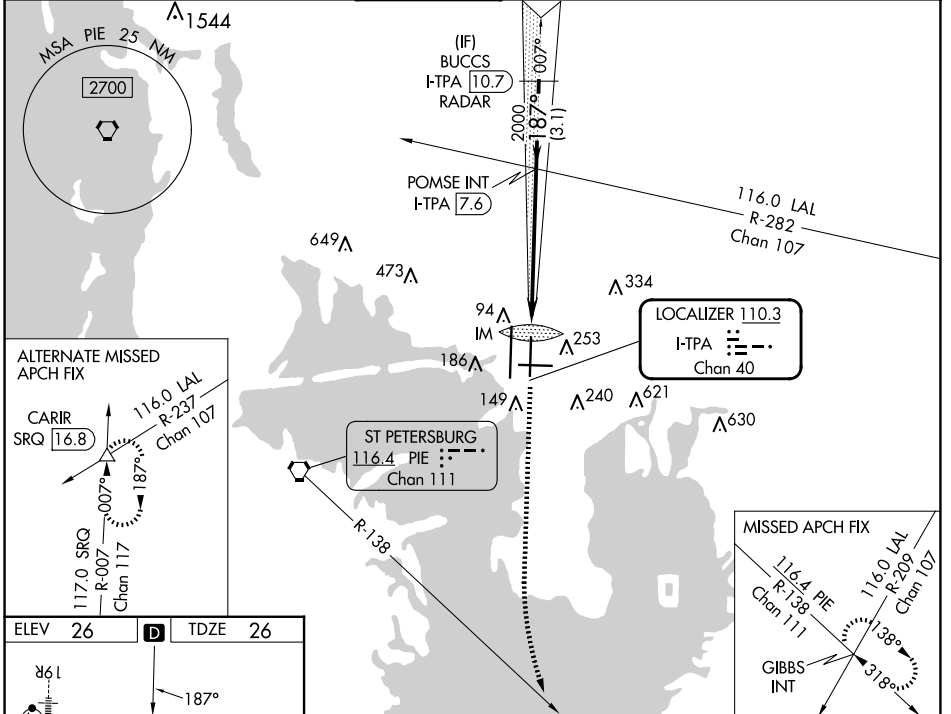


LOC/DME I-TPA 110.3 Chan 40	APP CRS 187°	Rwy ldg TDZE 26 Apt Elev 26	8300
---	------------------------	---	-------------

ILS or LOC RWY 19L

TAMPA INTL (TPA)

RADAR required for procedure entry.				ALS-F-2 		MISSED APPROACH: Climb to 600 then climbing left turn to 2000 on heading 160° and on PIE VORTAC R-138 to GIBBS INT and hold.	
Simultaneous approach authorized. For inop ALS, increase S-ILS 19L Cat E visibility to RVR 4000 and S-LOC 19L Cat C, D, and E visibility to 1 3/8 SM.				ARR 126.45 D-ATIS 128.475 DEP 128.475		TAMPA APP CON 118.5 307.175	
TAMPA TOWER 119.5 269.4		GND CON 121.7 269.4		CLNC DEL 133.6		CPDLC	



CATEGORY	A	B	C	D	E
S-ILS 19L	226/18 200 (200-1/2)				
S-LOC 19L	520/24	494 (500-1/2)	520/50	494 (500-1)	
CIRCLING	600-1	574 (600-1)	680-1 3/4 654 (700-1 3/4)	980-3 954 (1000-3)	NA

SE-3, 17 APR 2025 to 15 MAY 2025

SE-3, 17 APR 2025 to 15 MAY 2025