

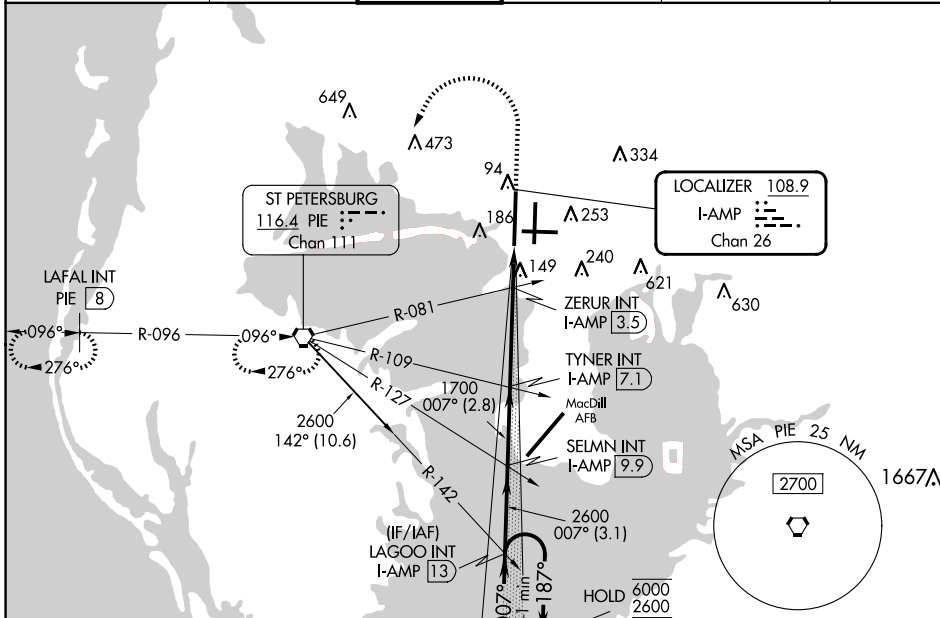
LOC/DME I-AMP 108.9 Chan 26	APP CRS 007°	Rwy Idg 10800 TDZE 11 Apt Elev 26
---	------------------------	--

ILS or LOC RWY 1L

TAMPA INTL (TPA)

DME and RADAR required.		ALSIF-2 	MISSED APPROACH: Climb to 500 then climbing left turn to 2000 direct PIE VORTAC and hold, continue climb-in-hold to 2000. (TACAN aircraft climb to 500 then climbing left turn to 2000 direct PIE VORTAC then on PIE VORTAC R-276 to LAFAL INT/PIE 8 DME and hold W, RT, 096° inbound).
Simultaneous approach authorized. For inop ALS, increase S-ILS 1L Cat E visibility to RVR 4000 and S-LOC 1L Cat E visibility to RVR 6000.			

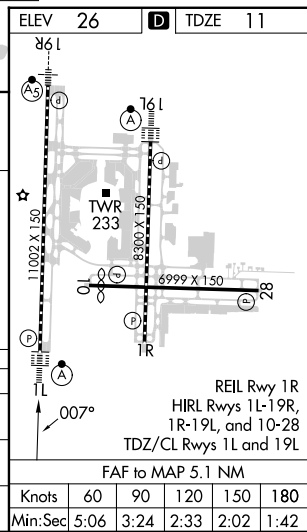
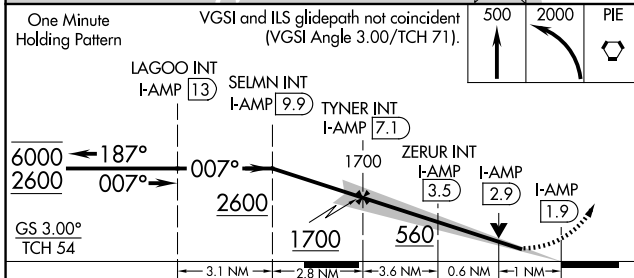
ARR 126.45	D-ATIS 128.475	DEP 118.5 307.175	TAMPA APP CON 119.5 269.4	TAMPA TOWER 121.7 269.4	GND CON 121.7 269.4	CLNC DEL 133.6	CPDLC
----------------------	--------------------------	-----------------------------	-------------------------------------	-----------------------------------	-------------------------------	--------------------------	-------



SE-3, 17 APR 2025 to 15 MAY 2025

SE-3, 17 APR 2025 to 15 MAY 2025

ELEV 26	TDZE 11
---------	---------



CATEGORY	A	B	C	D	E
S-ILS 1L	211/18 200 (200-1/2)				
S-LOC 1L	400/24	389 (400-1/2)	400/35	389 (400-3/4)	
CIRCLING	600-1	574 (600-1)	680-1 3/4 654 (700-1 3/4)	980-3	954 (1000-3)