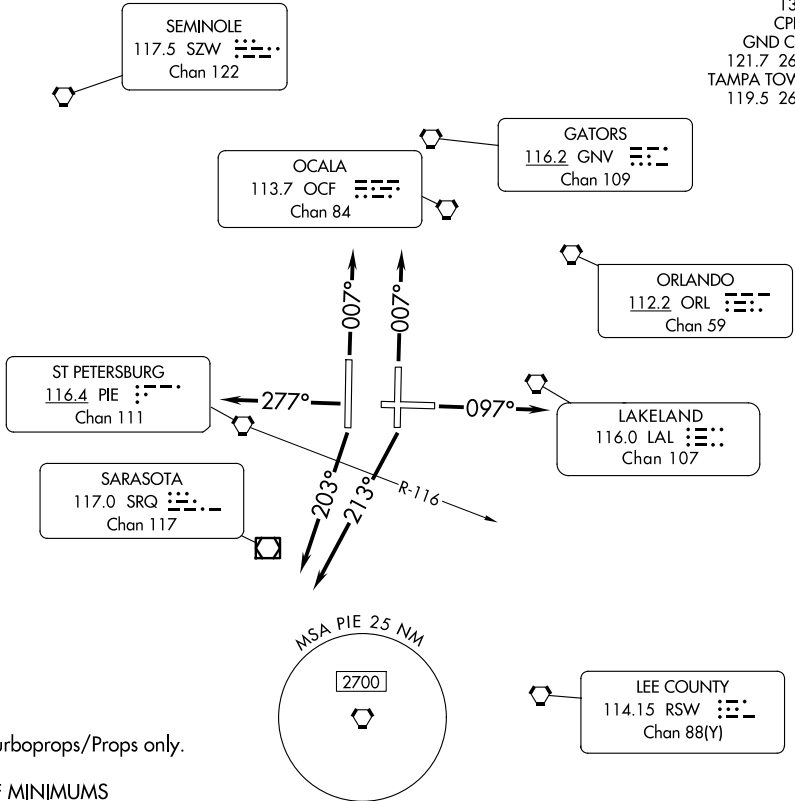


LGTNG FOUR DEPARTURE

**TOP ALTITUDE:
6000**

RADAR required.

TAMPA DEP CON 118.8 239.3
 D-ATIS DEP 128.475
 CLNC DEL 133.6
 CPDLC
 GND CON 121.7 269.4
 TAMPA TOWER 119.5 269.4



NOTE: Turboprops/Props only.

TAKEOFF MINIMUMS

Rwys 1L/R, 19R, 28: Standard.

Rwy 10: Standard with minimum climb of 245'/NM to 900.

Rwy 19L: Standard with minimum climb of 220'/NM to 300, or alternatively, with standard takeoff minimums and a normal 200'/NM climb gradient, takeoff must occur no later than 1500' prior to departure end of runway.

NOTE: Chart not to scale.



DEPARTURE ROUTE DESCRIPTION

TAKEOFF RUNWAYS 1L/R: Climb heading 007°, thence. . . .

TAKEOFF RUNWAY 10: Climb heading 097°, thence. . . .

TAKEOFF RUNWAY 19L: Climb heading 213°, thence. . . .

TAKEOFF RUNWAY 19R: Climb heading 203°, thence. . . .

TAKEOFF RUNWAY 28: Climb heading 277°, thence. . . .

. . . . expect RADAR vectors to join filed/assigned route. Maintain 6000. Expect clearance to filed altitude/flight level within 10 minutes after departure.

LGTNG FOUR DEPARTURE

SE-3, 17 APR 2025 to 15 MAY 2025

SE-3, 17 APR 2025 to 15 MAY 2025