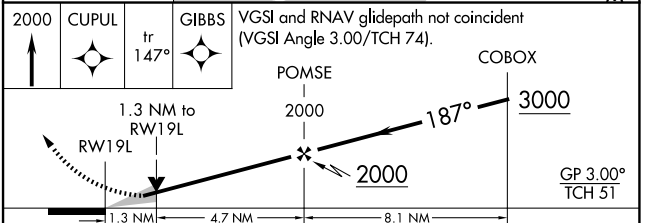
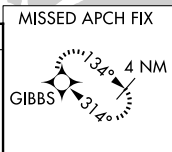
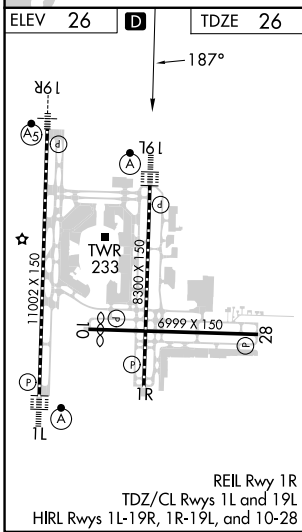
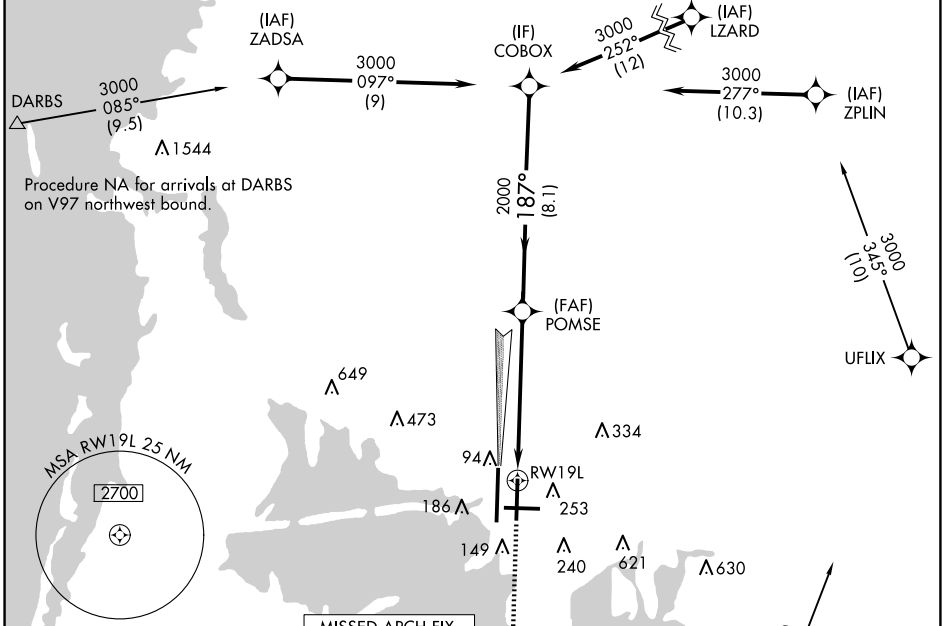


WAAS CH 49100 W19A	APP CRS 187°	Rwy Idg 8300 TDZE 26 Apt Elev 26
--	------------------------	---

RNAV (GPS) RWY 19L

TAMPA INTL (TPA)

RNP APCH - GPS				ALSF-2		MISSED APPROACH: Climb to 2000 direct CUPUL and on track 147° to GIBBS and hold.	
⚠ LNAV procedure NA during simultaneous operations. For uncompensated Baro-VNAV systems, LNAV/VNAV NA below 4°C or above 54°C. Simultaneous approach authorized. ⚠ Use of FD or AP required during simultaneous operations. For inop ALS, increase LNAV/VNAV visibility all Cats to RVR 6000, and LNAV visibility Cat C/D to 1½ SM.							
ARR 126.45	D-ATIS 128.475	DEP 128.475	TAMPA APP CON 118.5 307.175	TAMPA TOWER 119.5 269.4	GND CON 121.7 269.4	CLNC DEL 133.6	CPDLC



CATEGORY	A	B	C	D
LPV DA	226/18		200 (200-½)	
LNAV/VNAV DA	440/40		414 (500-¾)	
LNAV MDA	520/24	494 (500-½)	520/50	494 (500-1)
CIRCLING	600-1	574 (600-1)	680-1¾ 654 (700-1¾)	980-3 954 (1000-3)

SE-3, 17 APR 2025 to 15 MAY 2025

SE-3, 17 APR 2025 to 15 MAY 2025