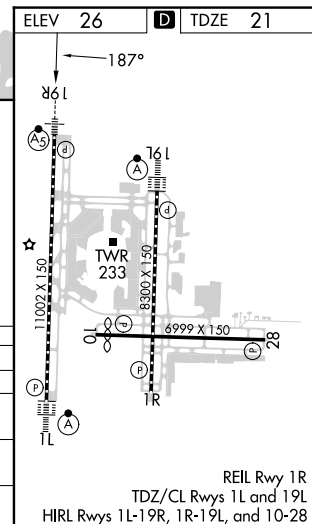
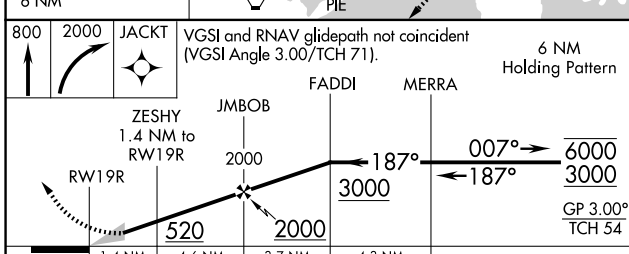
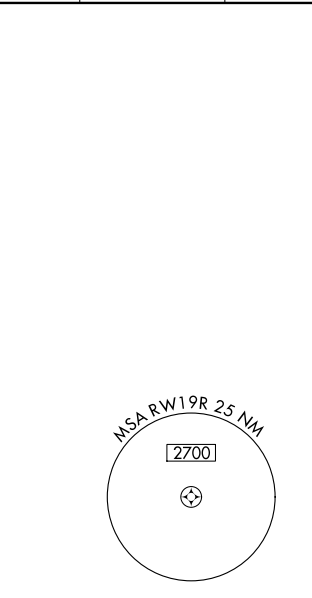
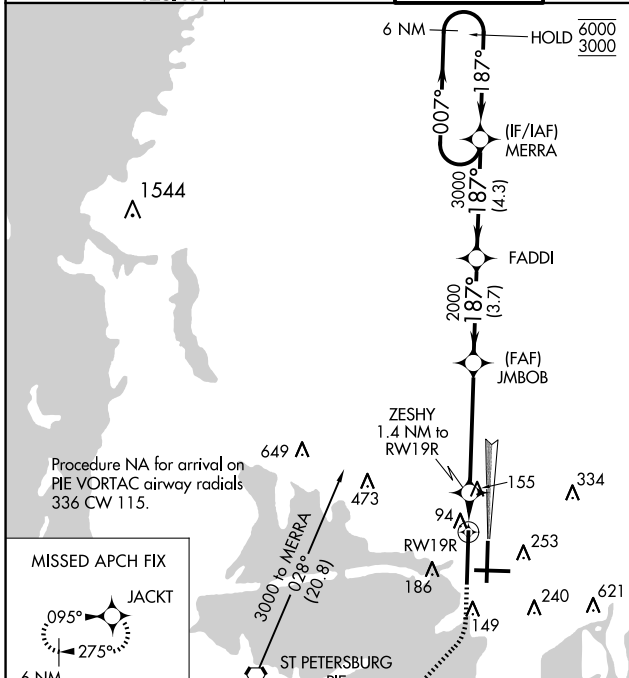


WAAS CH <b>40406</b> <b>W19B</b>	APP CRS <b>187°</b>	Rwy ldg <b>11002</b> TDZE <b>21</b> Apt Elev <b>26</b>
--	------------------------	--

# RNAV (GPS) RWY 19R

TAMPA INTL (TPA)

RNP APCH - GPS.					MALSR  MISSED APPROACH: Climb to 800 then climbing right turn to 2000 direct JACKT and hold.		
⚠ LNAV procedure NA during simultaneous operations. Simultaneous approach authorized. Use of FD or AP required during simultaneous operations. For uncompensated Baro-VNAV systems, LNAV/VNAV NA below 4°C or above 54°C. For inop ALS, increase LPV visibility Cat E to RVR 4000, LNAV/VNAV visibility all Cats to RVR 6000, and LNAV visibility Cat C/D/E to RVR 6000. *RVR 1800 authorized with use of FD or AP or HUD to DA.							
ARR	D-ATIS	DEP	TAMPA APP CON	TAMPA TOWER	GND CON	CLNC DEL	CPDLC
<b>126.45</b>		<b>128.475</b>	<b>118.5 307.175</b>	<b>119.5 269.4</b>	<b>121.7 269.4</b>	<b>133.6</b>	



CATEGORY	A	B	C	D	E
LPV DA*	221/24		200 (200-½)		
LNAV/VNAV DA	440/40		419 (500-¾)		
LNAV MDA	440/24	419 (500-½)	440/40	419 (500-¾)	
CIRCLING	600-1	574 (600-1)	680-1¾ 654 (700-1¾)	980-3	954 (1000-3)

SE-3, 17 APR 2025 to 15 MAY 2025

SE-3, 17 APR 2025 to 15 MAY 2025