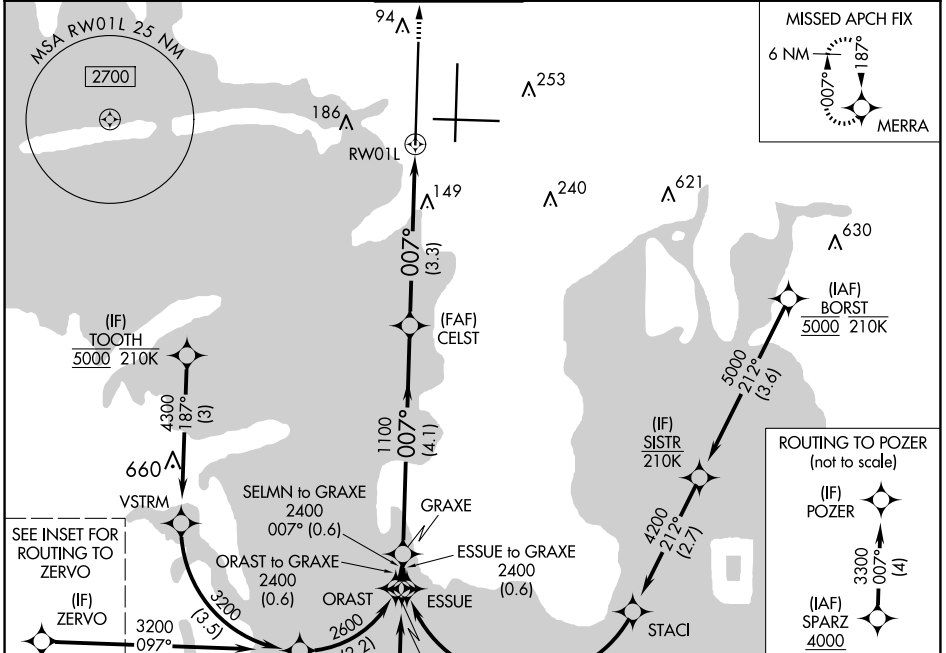


APP CRS	Rwy Idg <b>10800</b>
<b>007°</b>	TDZE <b>11</b>
	Apt Elev <b>26</b>

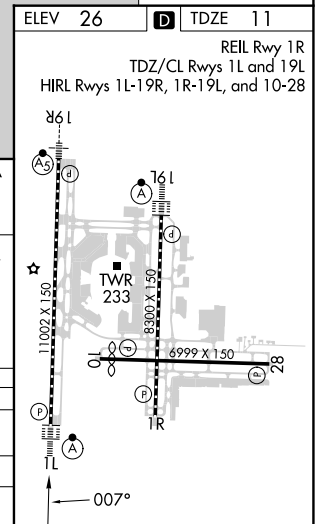
# RNAV (RNP) Z RWY 1L

TAMPA INTL (TPA)

RNP AR APCH - GPS.				ALSF-2	MISSED APPROACH: Climb to 2000 direct MERRA and hold.		
▼ For uncompensated Baro-VNAV systems, procedure NA below 4°C or above 54°C. Simultaneous approach authorized. For inop ALS, increase RNP 0.13 all Cats visibility to 4500 RVR.							
ARR	D-ATIS	DEP	TAMPA APP CON	TAMPA TOWER	GND CON	CLNC DEL	CPDLC
<b>126.45</b>		<b>128.475</b>	<b>118.5 307.175</b>	<b>119.5 269.4</b>	<b>121.7 269.4</b>	<b>133.6</b>	



ELEV	26	TDZE	11
REIL Rwy 1R			
TDZ/CL Rws 1L and 19L			
HIRL Rws 1L-19R, 1R-19L, and 10-28			
GP 3.00°	TCH 55		
4.1 NM		3.3 NM	
CATEGORY	A	B	C
RNP 0.13 DA	299/24	288 (300-½)	305/24
RNP 0.30 DA	405/35		394 (400-¾)
324/24 294 (300-½) 313 (300-½)			
<b>AUTHORIZATION REQUIRED</b>			



SE-3, 17 APR 2025 to 15 MAY 2025

SE-3, 17 APR 2025 to 15 MAY 2025