

# RNAV (GPS) Y RWY 1L

TAMPA INTL (TPA)

WAAS CH <b>50406</b> <b>W01A</b>	APP CRS <b>007°</b>	Rwy Idg <b>10800</b> TDZE <b>11</b> Apt Elev <b>26</b>
--	------------------------	--

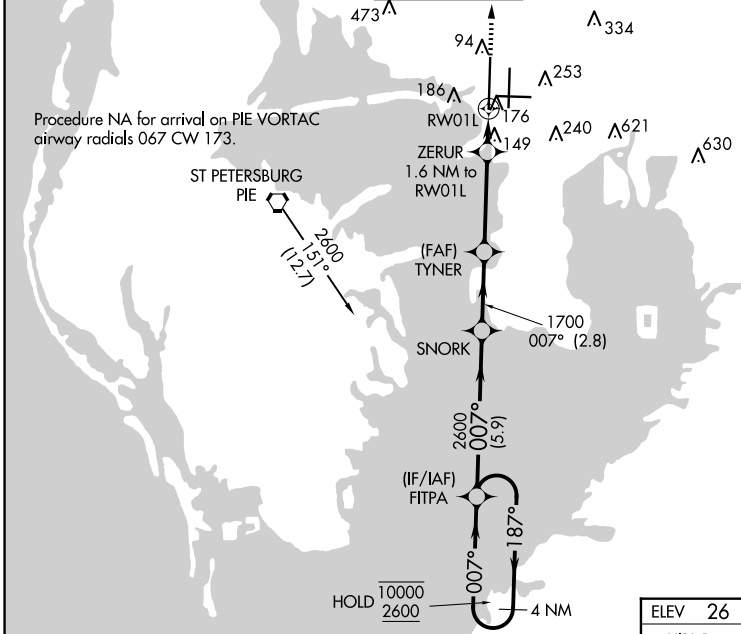
RNP APCH - GPS.

**⚠** For uncompensated Baro-VNAV systems, LNAV/VNAV NA below 4°C or above 54°C.  
**⚠** For inop ALSF, increase LPV Cat E visibility to RVR 4000, LNAV/VNAV all Cats visibility to RVR 6000, and LNAV Cat E visibility to 1¼ SM. Simultaneous approach authorized with Rwy 1R. LNAV procedure NA during simultaneous operations. Use of FD or AP required during simultaneous operations.

ALSF-2

MISSED APPROACH:  
Climb to 2000 direct MERRA and hold.

ARR <b>126.45</b>	D-ATIS <b>128.475</b>	DEP <b>118.5 307.175</b>	TAMPA APP CON <b>119.5 269.4</b>	TAMPA TOWER <b>119.5 269.4</b>	GND CON <b>121.7 269.4</b>	CLNC DEL <b>133.6</b>	CPDLC
-------------------	-----------------------	--------------------------	----------------------------------	--------------------------------	----------------------------	-----------------------	-------

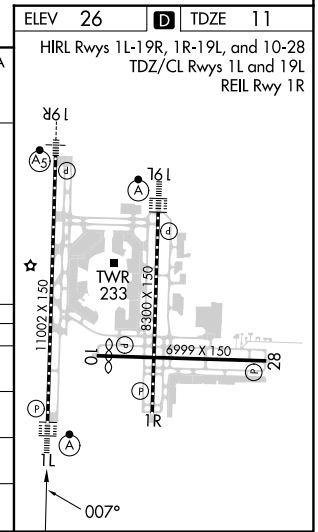
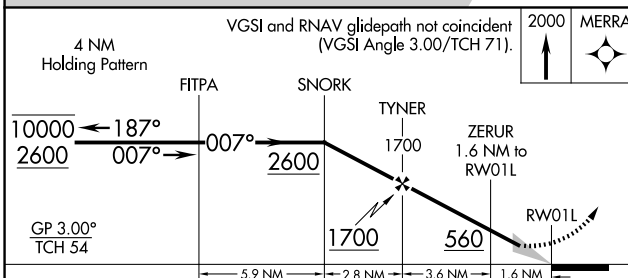


MISSED APCH FIX

6 NM 187° MERRA

MSA RWY 1L 25 NM

2700



CATEGORY	A	B	C	D	E
LPV DA	211/18		200 (200-½)		
LNAV/VNAV DA	431/40		420 (500-¾)		
LNAV MDA	440/24	429 (500-½)		440/40 429 (500-¾)	
CIRCLING	600-1	574 (600-1)	680-1¾ 654 (700-1¾)	980-3	954 (1000-3)

SE-3, 17 APR 2025 to 15 MAY 2025

SE-3, 17 APR 2025 to 15 MAY 2025