

# BURRO FIVE DEPARTURE (RNAV)

AL-430 (FAA)

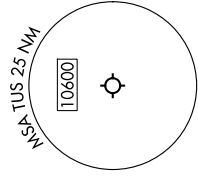
TUCSON INTL (TUS)  
TUCSON, ARIZONA

SW-4, 17 APR 2025 to 15 MAY 2025

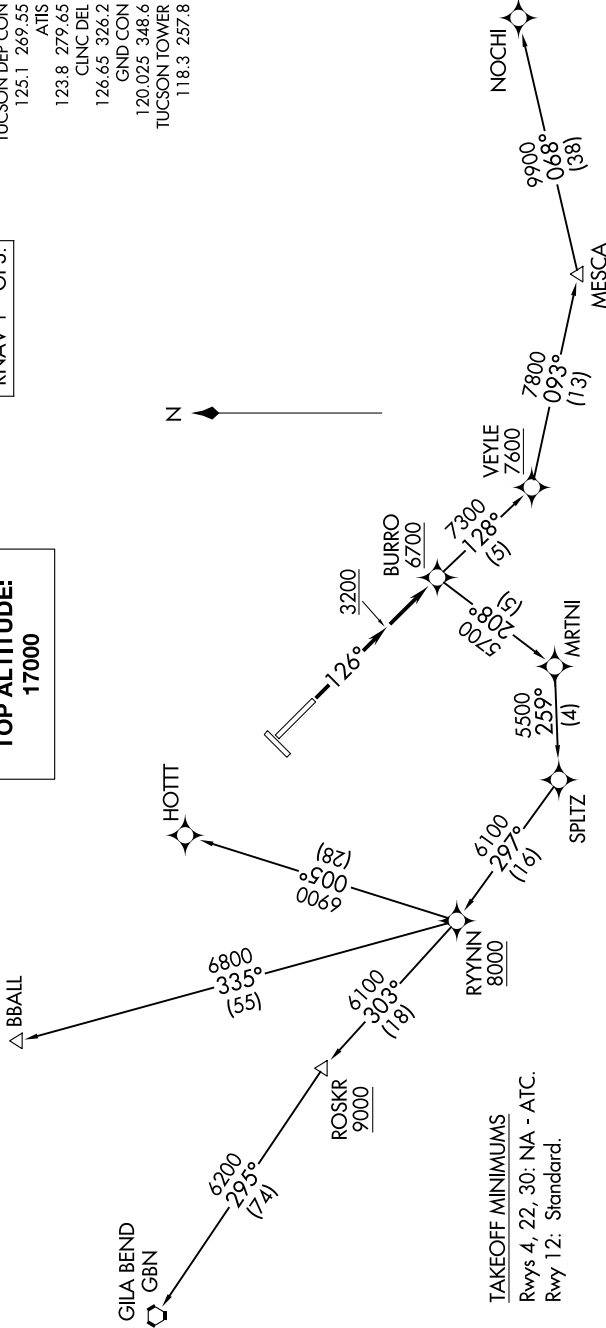
RNAV 1 - GPS.

**TOP ALTITUDE:  
17000**

TUCSON DEP CON  
125.1 269.55  
ATIS  
123.8 279.65  
CLNC DEL  
126.65 326.2  
GND CON  
120.025 348.6  
TUCSON TOWER  
118.3 257.8



NOTE: Chart not to scale.



**TAKEOFF MINIMUMS**  
Rwys 4, 22, 30: NA - ATC.  
Rwy 12: Standard.

## DEPARTURE ROUTE DESCRIPTION

**TAKEOFF RUNWAY 12:** Climb heading 126° to 3200, then continue climb direct BURRO, cross BURRO at or above 6700, thence. . . .  
. . . . on assigned transition, maintain 17000, expect filed altitude 10 minutes after departure.

- BBALL TRANSITION (BURRO5.BBALL)**
- GILA BEND TRANSITION (BURRO5.GBN)**
- HOTTI TRANSITION (BURRO5.HOTTI)**
- NOCHI TRANSITION (BURRO5.NOCHI)**

# BURRO FIVE DEPARTURE (RNAV)

SW-4, 17 APR 2025 to 15 MAY 2025