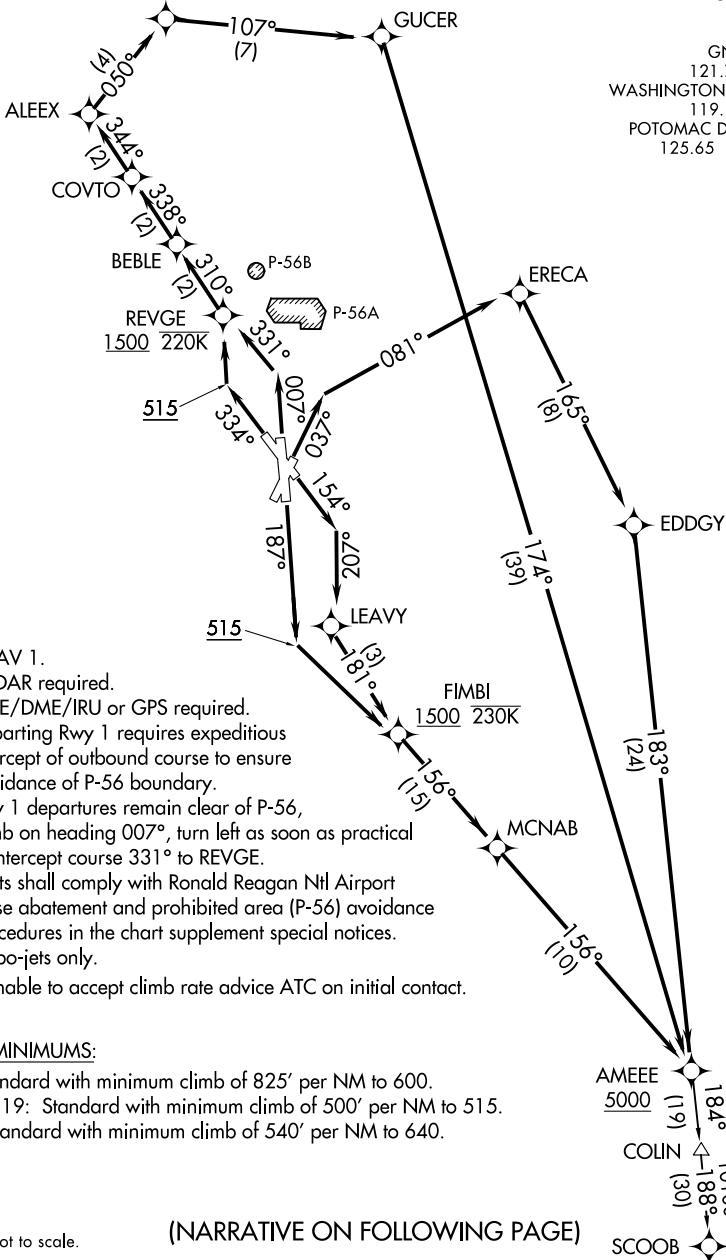


AMEEE ONE DEPARTURE (RNAV)

TOP ALTITUDE:
5000

DOGUE
4000 250K

D-ATIS
132.65
CLNC DEL
128.25
CPDLC
GND CON
121.7 257.6
WASHINGTON TOWER
119.1 257.6
POTOMAC DEP CON
125.65 348.725



- NOTE: RNAV 1.
- NOTE: RADAR required.
- NOTE: DME/DME/IRU or GPS required.
- NOTE: Departing Rwy 1 requires expeditious intercept of outbound course to ensure avoidance of P-56 boundary.
- NOTE: Rwy 1 departures remain clear of P-56, climb on heading 007°, turn left as soon as practical to intercept course 331° to REVGE.
- NOTE: Pilots shall comply with Ronald Reagan Ntl Airport noise abatement and prohibited area (P-56) avoidance procedures in the chart supplement special notices.
- NOTE: Turbo-jets only.
- NOTE: If unable to accept climb rate advice ATC on initial contact.

TAKEOFF MINIMUMS:
 Rwy 1: Standard with minimum climb of 825' per NM to 600.
 Rwy 4, 15, 19: Standard with minimum climb of 500' per NM to 515.
 Rwy 33: Standard with minimum climb of 540' per NM to 640.

NOTE: Chart not to scale.

(NARRATIVE ON FOLLOWING PAGE)

NE-3, 17 APR 2025 to 15 MAY 2025

NE-3, 17 APR 2025 to 15 MAY 2025

AMEEO ONE DEPARTURE (RNAV)