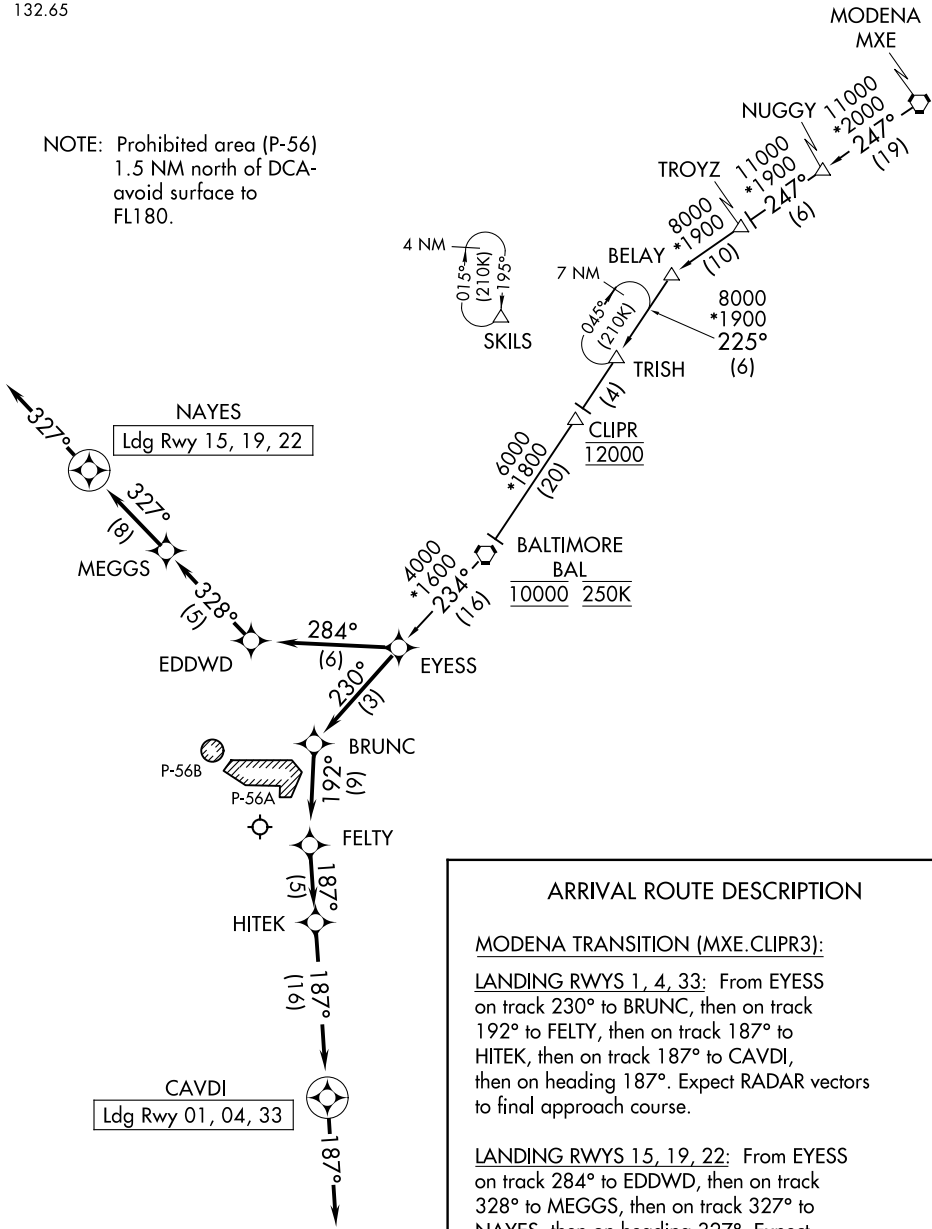


POTOMAC APP CON
128.7 307.9
D-ATIS
132.65

RNAV 1 - DME/DME/IRU or GPS.

RADAR required.

NOTE: Prohibited area (P-56)
1.5 NM north of DCA-
avoid surface to
FL180.



NE-3, 17 APR 2025 to 15 MAY 2025

NE-3, 17 APR 2025 to 15 MAY 2025

ARRIVAL ROUTE DESCRIPTION

MODENA TRANSITION (MXE.CLIPR3):
LANDING RWYS 1, 4, 33: From EYESS on track 230° to BRUNC, then on track 192° to FELTY, then on track 187° to HITEK, then on heading 187°. Expect RADAR vectors to final approach course.

LANDING RWYS 15, 19, 22: From EYESS on track 284° to EDDWD, then on track 328° to MEGGS, then on track 327° to NAYES, then on heading 327°. Expect RADAR vectors to final approach course.

NOTE: Chart not to scale.