

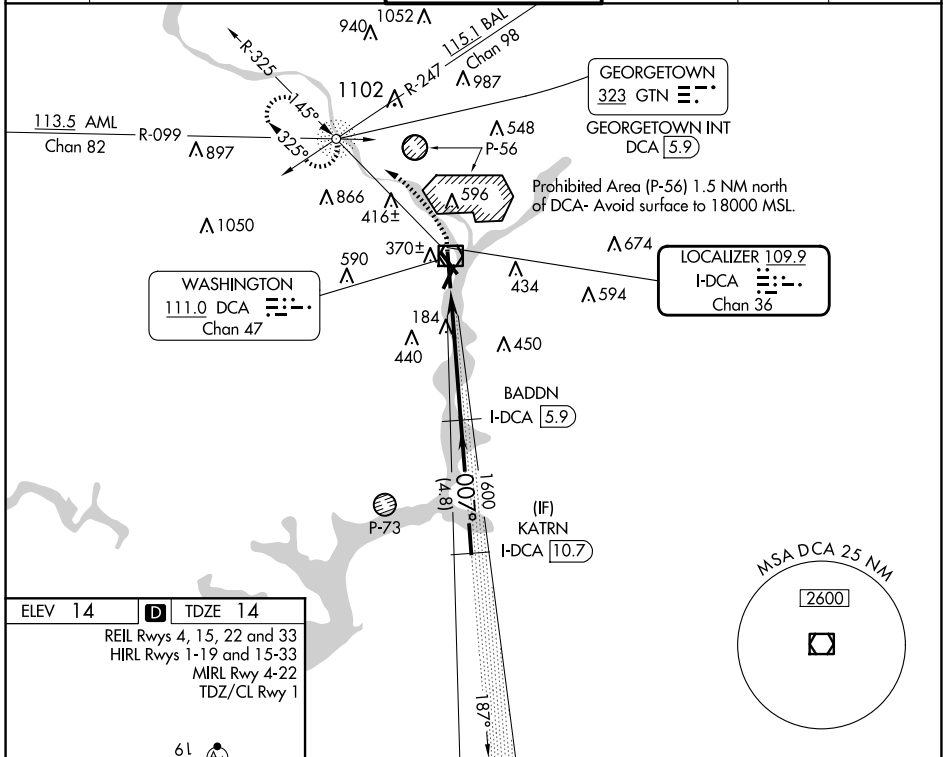
LOC/DME I-CA <b>109.9</b> Chan <b>36</b>	APP CRS <b>007°</b>	Rwy Idg <b>6869</b> TDZE <b>14</b> Apt Elev <b>14</b>
--	------------------------	---

# ILS RWY 1 (CAT II)

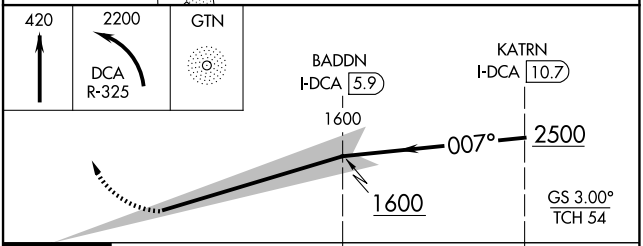
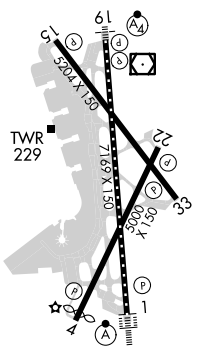
RONALD REAGAN WASHINGTON NTL (DCA)

DME required. RADAR required for procedure entry.		ALSF-2 	MISSED APPROACH: Climb to 420 then climbing left turn to 2200 on DCA VOR/DME R-325 to GTN NDB/INT/DCA 5.9 DME and hold.		
---	--	------------	---	--	--

D-ATIS <b>132.65</b>	POTOMAC APP CON <b>119.85 239.25</b> (WEST/SOUTH) <b>124.2 360.8</b> (EAST)	WASHINGTON TOWER <b>119.1 257.6</b>	GND CON <b>121.7 257.6</b>	CLNC DEL <b>128.25</b>	CPDLC
-------------------------	---	--	-------------------------------	---------------------------	-------



ELEV 14	<b>D</b>	TDZE 14
REIL Rwys 4, 15, 22 and 33 HIRL Rwys 1-19 and 15-33 MIRL Rwy 4-22 TDZ/CL Rwy 1		



CATEGORY	A	B	C	D
S-ILS 1	RA 106/12 100 DA 114			

**CATEGORY II ILS- SPECIAL AIRCREW & AIRCRAFT CERTIFICATION REQUIRED**

NE-3, 17 APR 2025 to 15 MAY 2025

NE-3, 17 APR 2025 to 15 MAY 2025