

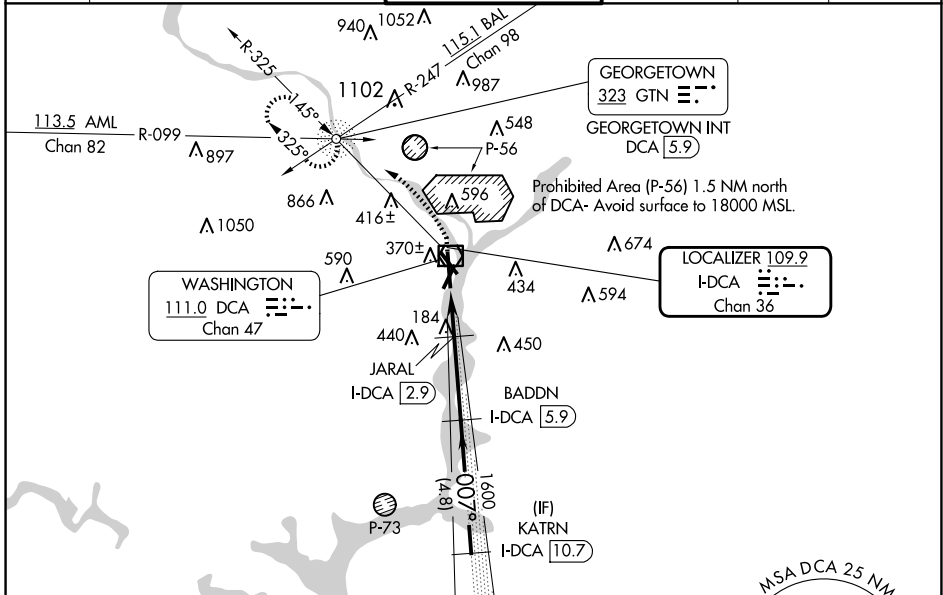
LOC/DME I-DCA <b>109.9</b> Chan <b>36</b>	APP CRS <b>007°</b>	Rwy Idg <b>6869</b> TDZE <b>14</b> Apt Elev <b>14</b>
---	------------------------	---

# ILS or LOC RWY 1

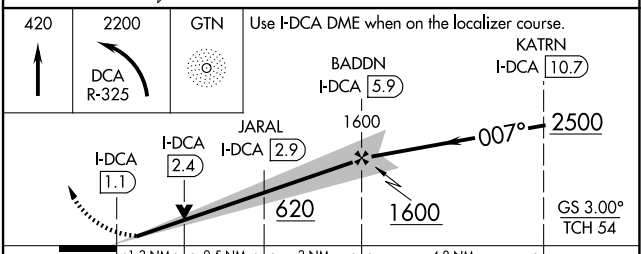
RONALD REAGAN WASHINGTON NTL (DCA)

DME required. RADAR required for procedure entry.		ALSIF-2 	MISSED APPROACH: Climb to 420 then climbing left turn to 2200 on DCA VOR/DME R-325 to GTN NDB/INT/DCA 5.9 DME and hold.	
Circling NA northeast of Rwy 15-33. For inop ALS, increase S-LOC 1 Cats C and D visibility to 1 3/8 SM.				

D-ATIS <b>132.65</b>	POTOMAC APP CON <b>119.85 239.25</b> (WEST/SOUTH) <b>124.2 360.8</b> (EAST)	WASHINGTON TOWER <b>119.1 257.6</b>	GND CON <b>121.7 257.6</b>	CLNC DEL <b>128.25</b>	CPDLC
-------------------------	---	--	-------------------------------	---------------------------	-------



ELEV 14	<b>D</b>	TDZE 14
REIL Rwys 4, 15, 22 and 33 HIRL Rwys 1-19 and 15-33 MIRL Rwy 4-22 TDZ/CL Rwy 1		



FAF to MAP 4.8 NM					
Knots	60	90	120	150	180
Min:Sec	4:48	3:12	2:24	1:55	1:36
<b>C</b> CIRCLING	A		B		D
S-ILS 1	214/18				200 (200-1/2)
S-LOC 1	480/24	466 (500-1/2)		480/50	466 (500-1)
	720-1	900-1 1/4	900-2 3/4	900-3	
	706 (800-1)	886 (900-1 1/4)	886 (900-2 3/4)	886 (900-3)	

NE-3, 17 APR 2025 to 15 MAY 2025

NE-3, 17 APR 2025 to 15 MAY 2025