


RNAV (GPS) Y RWY 19

RONALD REAGAN WASHINGTON NTL (DCA)

APP CRS	Rwy Idg	6869
187°	TDZE	13
	Apt Elev	14

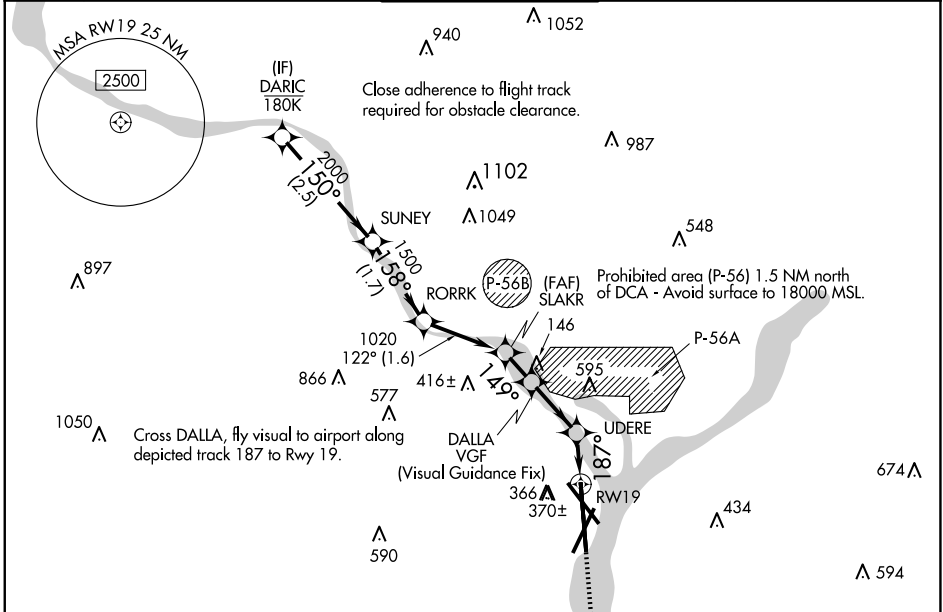
RNP APCH - GPS.
 RADAR required.

▽
▲ Rwy 19 helicopter visibility reduction below ¾ SM NA. Inop table does not apply.

MALSF


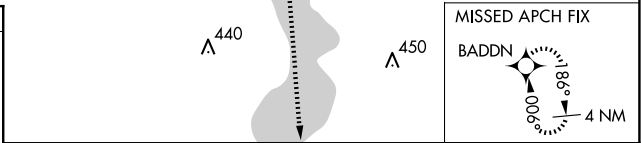
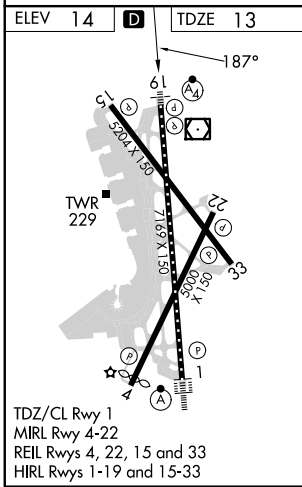
MISSED APPROACH: (Do not exceed 165K until Rwy 19) Climb to 3000 on FMS lateral path to Rwy 19, then direct BADDN and hold, continue climb-in-hold to 3000. If unable to follow the FMS lateral path, climb to 3000 and turn to heading 187° direct BADDN and hold, continue climb-in-hold to 3000.

D-ATIS	POTOMAC APP CON (WEST/SOUTH)	WASHINGTON TOWER	GND CON	CLNC DEL	CPDLC
132.65	119.85 239.25 124.2 360.8 (EAST)	119.1 257.6	121.7 257.6	128.25	

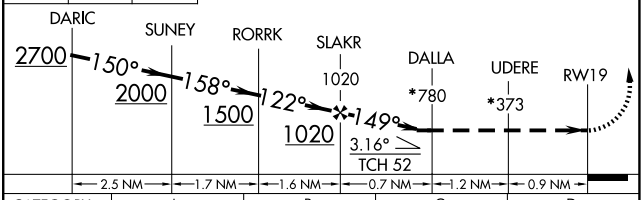


NE-3, 17 APR 2025 to 15 MAY 2025

NE-3, 17 APR 2025 to 15 MAY 2025



3000	FMS Lateral to RWY19	BADDN	*Check altitude. Turns required in the visual segment.
------	----------------------	-------	--



CATEGORY	A	B	C	D
LNAV MDA	780-2½		767 (800-2½)	