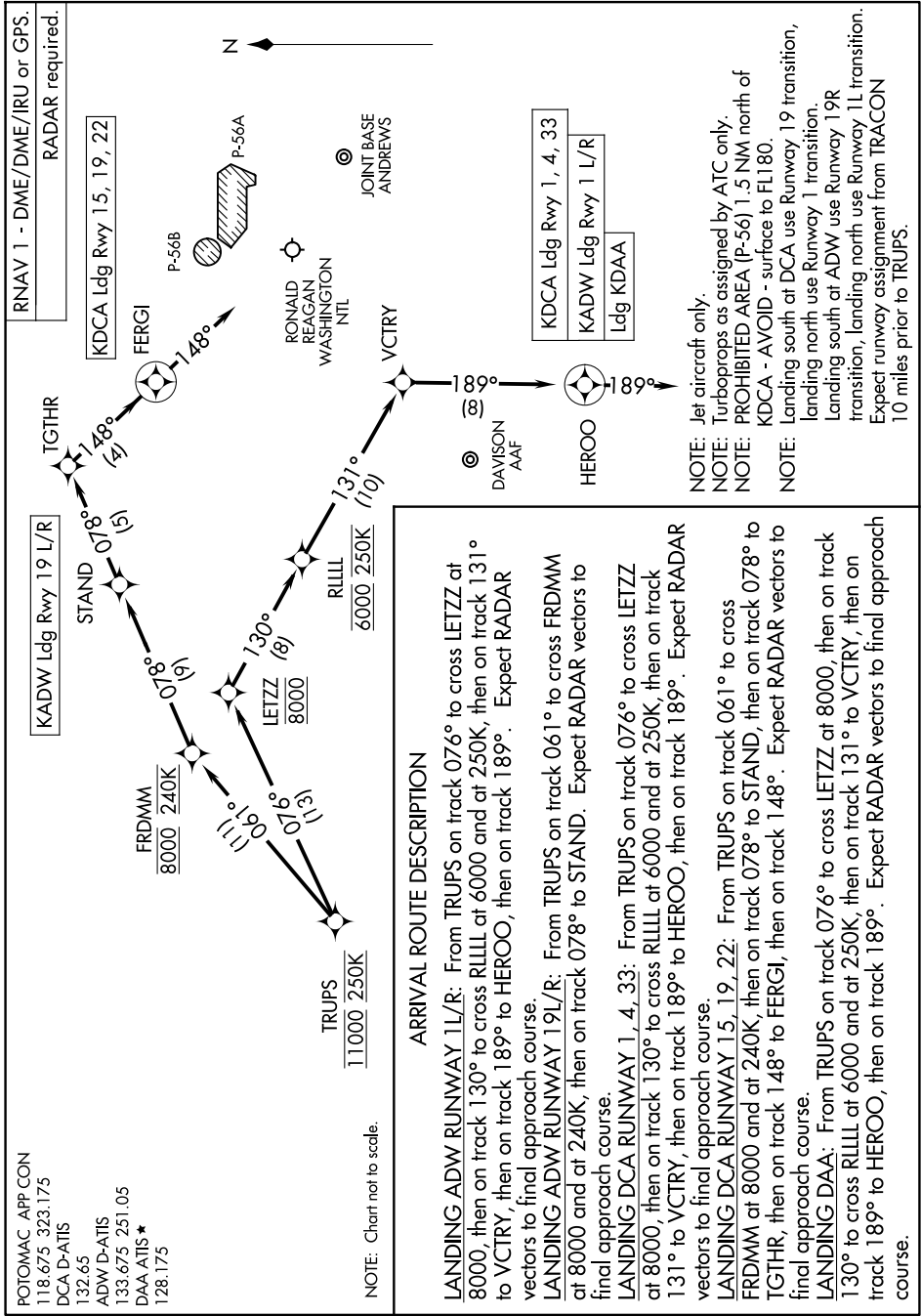


# TRUPS FIVE ARRIVAL (RNAV) Arrival Routes

WASHINGTON, DC

NE-3, 17 APR 2025 to 15 MAY 2025



# TRUPS FIVE ARRIVAL (RNAV) Arrival Routes

WASHINGTON, DC

NE-3, 17 APR 2025 to 15 MAY 2025

POTOMAC APP CON  
118.675 323.175  
DCA D-ATIS  
132.65  
ADW D-ATIS  
133.675 251.05  
DAA ATIS ★  
128.175

**ARRIVAL ROUTE DESCRIPTION**

**LANDING ADW RUNWAY 1L/R:** From TRUPS on track 076° to cross LETZ at 8000, then on track 130° to cross RLLL at 6000 and at 250K, then on track 131° to VCTRY, then on track 189° to HEROO, then on track 189°. Expect RADAR vectors to final approach course.

**LANDING ADW RUNWAY 19L/R:** From TRUPS on track 061° to cross FRDMM at 8000 and at 240K, then on track 078° to STAND. Expect RADAR vectors to final approach course.

**LANDING DCA RUNWAY 1, 4, 33:** From TRUPS on track 076° to cross LETZ at 8000, then on track 130° to cross RLLL at 6000 and at 250K, then on track 131° to VCTRY, then on track 189° to HEROO, then on track 189°. Expect RADAR vectors to final approach course.

**LANDING DCA RUNWAY 15, 19, 22:** From TRUPS on track 061° to cross FRDMM at 8000 and at 240K, then on track 078° to STAND, then on track 078° to TGTHR, then on track 148° to FERG1, then on track 148°. Expect RADAR vectors to final approach course.

**LANDING DAA:** From TRUPS on track 076° to cross LETZ at 8000, then on track 130° to cross RLLL at 6000 and at 250K, then on track 131° to VCTRY, then on track 189° to HEROO, then on track 189°. Expect RADAR vectors to final approach course.