

# HI-ILS or LOC RWY 20

LOC I-BAF <b>111.9</b>	APCH CRS <b>204°</b>	Rwy ldg TDZE <b>8919</b> <b>270</b> Arprt Elev <b>270</b>	[USAF]	WESTFIELD-BARNES RGNL (KBAF)
---------------------------	-------------------------	---	--------	------------------------------

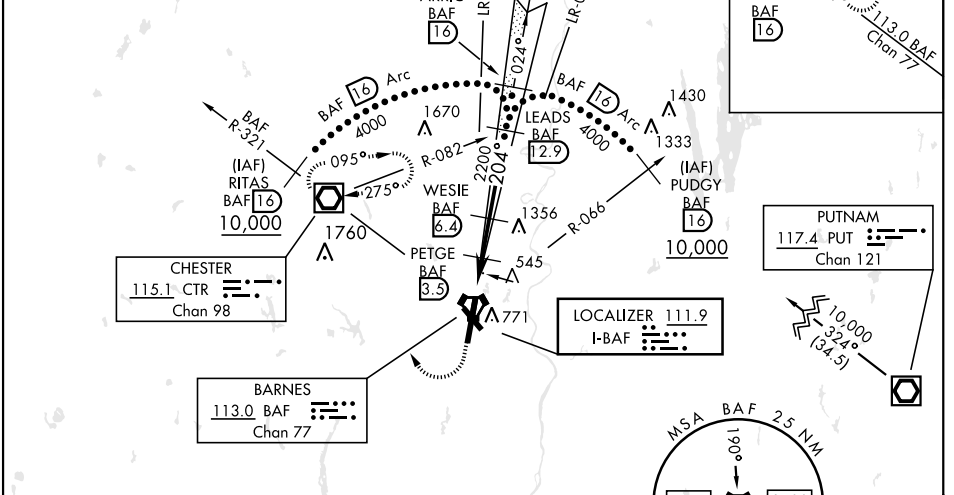
**▲** \*When ALS inop, increase CAT E vis to 1/4 miles.  
 \*\*When ALS inop, increase CAT CD vis to 1/2 miles, CAT E vis to 3 miles.

**MALS** MISSED APPROACH: Climb to 1300, then climbing right turn to 4000 direct CTR VOR/DME and hold, continue climb in hold to 4000.  
 (TACAN acct climb to 1300, then climbing right turn to 4000 via hdg 010° and BAF VORTAC R-321 to RITAS and hold.)

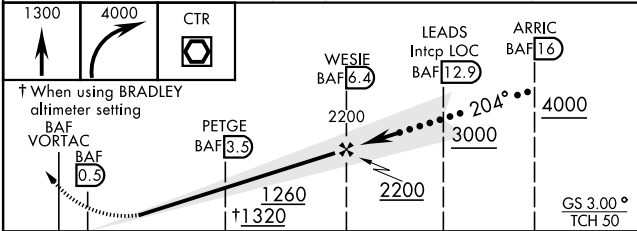
ATIS <b>127.1 263.15</b>	BRADLEY APP CON <b>125.35 281.5</b>	WESTFIELD TOWER ★ <b>125.075 (CTAF) 0 251.1</b>	GND CON <b>121.7 289.4</b>
-----------------------------	--	--	-------------------------------

\*\*\* When ALS inop, increase CAT E vis to 3 miles.  
 When local altimeter setting not received, use Bradley Intl altimeter setting.  
**3491**

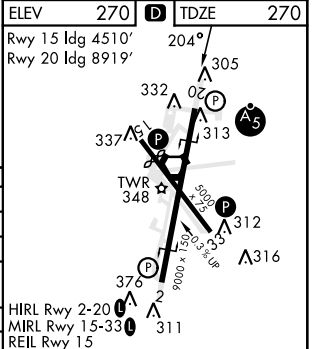
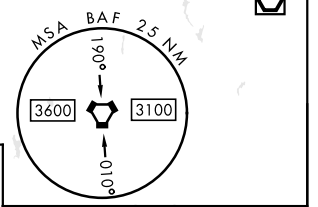
Night Landing: Rwy 15, Rwy 20, Rwy 33 NA at night.  
 DME from BAF VORTAC



EMERG SAFE ALT 100 NM 7000



CATEGORY	C	D	E
S-ILS 20*	520/50	250	(300-1)
S-LOC 20**	800/55	530	(600-1/4)
<b>C</b> CIRCLING	1160-2 $\frac{3}{4}$	890 (900-2 $\frac{3}{4}$ )	1660-3 1390 (1400-3)
BRADLEY INTL ALTIMETER			
S-ILS 20*	564/50	294	(300-1)
S-LOC 20***	860-1 $\frac{1}{4}$	590	(600-1/4)
<b>C</b> CIRCLING	1200-2 $\frac{3}{4}$ 930 (1000-2 $\frac{3}{4}$ )	1200-3 930 (1000-3)	1680-3 1410 (1500-3)



ELEV	270	TDZE	270
Rwy 15 ldg	4510'	204°	
Rwy 20 ldg	8919'		
Knots	120	140	160
Min:Sec	2:57	2:32	2:13
		1:58	1:46

# HI-ILS or LOC RWY 20

NE-1, 17 APR 2025 to 15 MAY 2025

NE-1, 17 APR 2025 to 15 MAY 2025