

WAAS CH 77817 W02A	APP CRS 024°	Rwy Idg TDZE 264 Apt Elev 270	9000
--	------------------------	---	-------------

RNAV (GPS) RWY 2

WESTFIELD-BARNES RGNL (BAF)

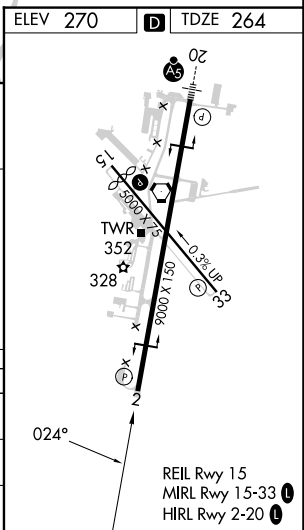
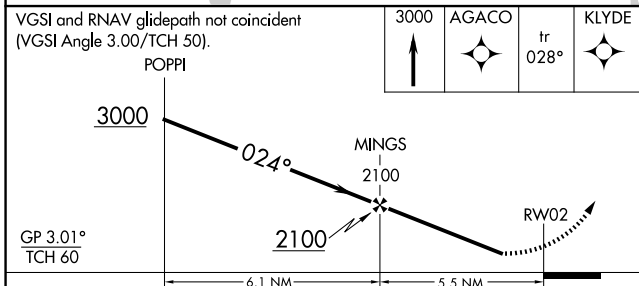
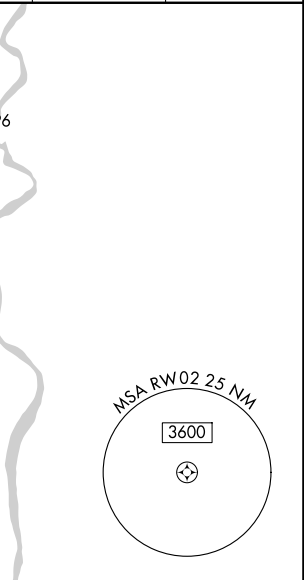
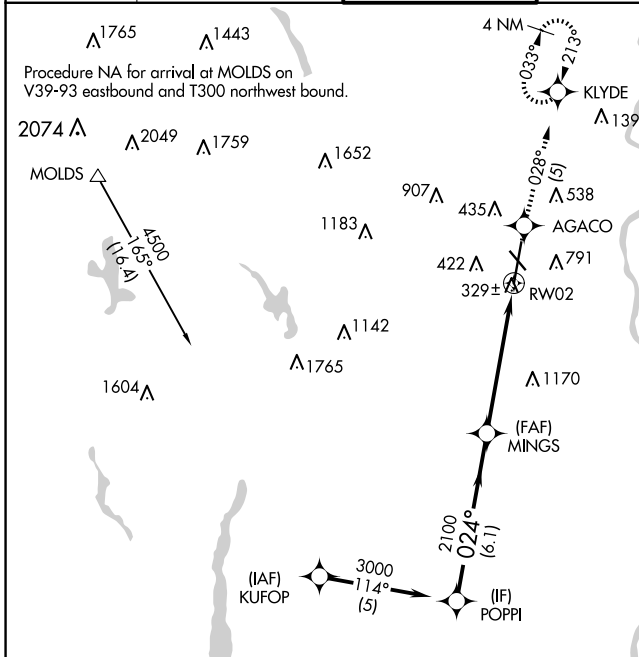
RNP APCH.

Baro-VNAV NA when using Bradley Intl altimeter setting. For uncompensated Baro-VNAV systems, LNAV/VNAV NA below -15°C or above 54°C.

When local altimeter setting not received, use Bradley Intl altimeter setting and increase all DA 44 feet and all MDA 60 feet; increase LNAV/VNAV all Cats visibility 1/4 mile. Rwy 2 helicopter visibility reduction below 3/8 SM NA.

MISSED APPROACH: Climb to 3000 direct AGACO and on track 028° to KLYDE and hold, continue climb-in-hold to 3000.

ATIS 127.1 263.15	BRADLEY APP CON 125.35 281.5	WESTFIELD TOWER * 125.075 251.1	GND CON 121.7 289.4	CLNC DEL 121.7	CTAF 118.9
-----------------------------	--	---	-------------------------------	--------------------------	----------------------



CATEGORY	A	B	C	D	E
LPV DA	515-1 251 (300-1)				
LNAV/VNAV DA	858-2 594 (600-2)				
LNAV MDA	1360-1 1/4 1096 (1100-1 1/4)	1360-1 1/2 1096 (1100-1 1/2)	1360-3 1096 (1100-3)		

NE-1, 17 APR 2025 to 15 MAY 2025

NE-1, 17 APR 2025 to 15 MAY 2025