

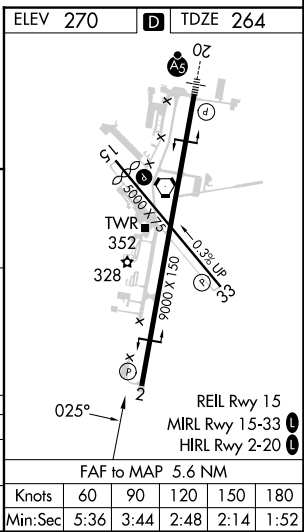
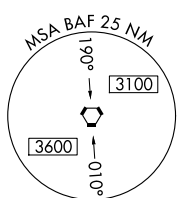
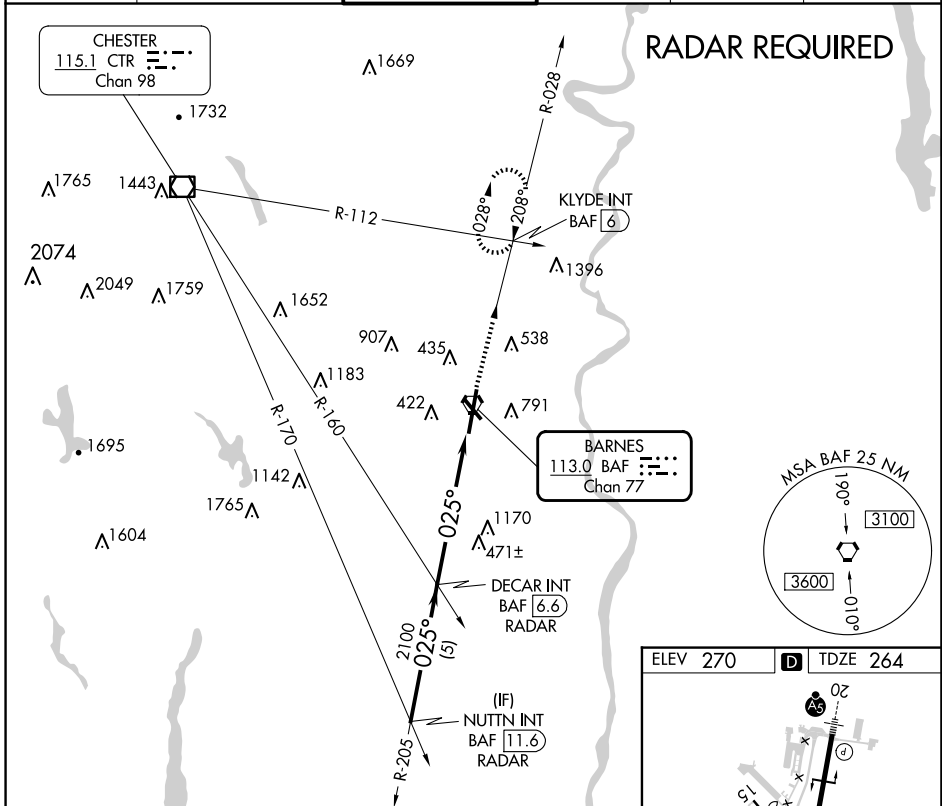
BAF VORTAC <b>113.0</b> Chan 77	APP CRS <b>025°</b>	Rwy Idg TDZE <b>264</b> Apt Elev <b>270</b>	<b>9000</b>
---------------------------------------	------------------------	---	-------------

# VOR or TACAN RWY 2

WESTFIELD-BARNES RGNL (BAF)

Night landing: Rwy 15 NA. Helicopter visibility reduction below 3/4 SM NA.	MISSED APPROACH: Climb to 3000 via the BAF VORTAC R-028 to KLYDE INT and hold.
---	--

ATIS <b>127.1 263.15</b>	BRADLEY APP CON <b>125.35 281.5</b>	WESTFIELD TOWER * <b>125.075 251.1</b>	GND CON <b>121.7 289.4</b>	CLNC DEL <b>121.7</b>	CTAF <b>118.9</b>
-----------------------------	--	---	-------------------------------	--------------------------	----------------------



NUTTN INT BAF 11.6 RADAR	VGSI and descent angles not coincident (VGSI Angle 3.00/TCH 50).		3000	KLYDE INT	
	DECAR INT BAF 6.6 RADAR		2100		
3000		2100	3.02° TCH 43	BAF R-028	
5 NM		5.6 NM		BAF 1 BAF VORTAC	
CATEGORY	A	B	C	D	E
S-2	780-1	516 (600-1)	780-1½ 516 (600-1½)	780-1¾	516 (600-1¾)
CIRCLING	1160-1¼	890 (900-1¼)	1160-2¾ 890 (900-2¾)	1660-3	1390 (1400-3)

NE-1, 17 APR 2025 to 15 MAY 2025

NE-1, 17 APR 2025 to 15 MAY 2025