
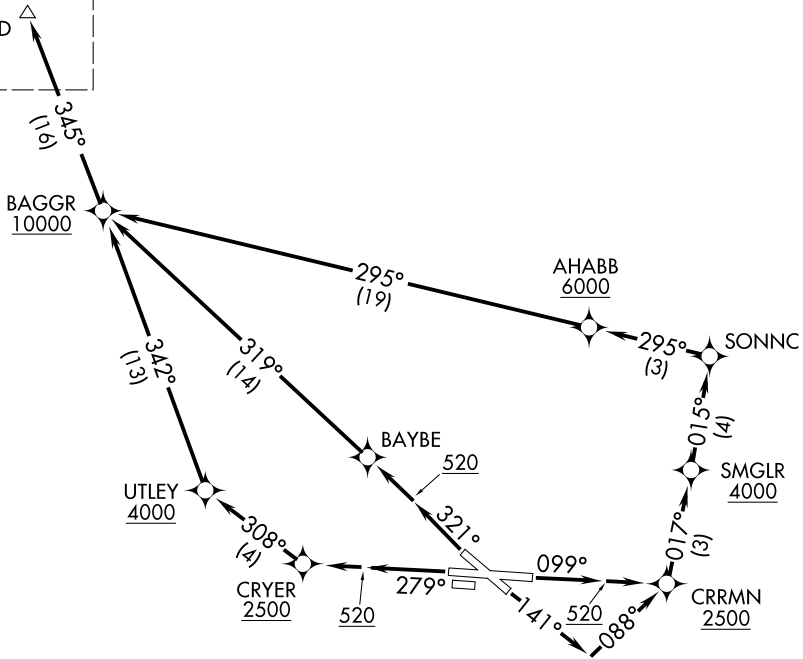


TBIRD SIX DEPARTURE (RNAV) Departure Routes

PALM BEACH DEP CON 128.3 317.4 D-ATIS 123.75 CLNC DEL 121.6 284.6 CPDLC GND CON 121.9 284.6 PALM BEACH TOWER 119.1 257.8	RNAV 1 - DME/DME/IRU or GPS. RADAR required for non-GPS equipped aircraft.	TOP ALTITUDE: 11000
--	--	--------------------------------

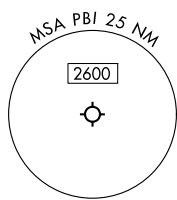
See following
page for
transition routes.

TBIRD 



TAKEOFF MINIMUMS
 Rwy's 10L, 14, 28R, 32: Standard with
 minimum climb of 500'/NM to 520.

- NOTE: Jets aircraft only.
- NOTE: CHEFS Transition, for use by MCO or DAB area arrivals.
- NOTE: All aircraft: Climb gradients: If unable to accept climb rate advise ATC prior to departure.
- NOTE: MATLK Transition for use by aircraft filed to Jacksonville area airports only, or as assigned by ATC.



NOTE: Chart not to scale. (CONTINUED ON FOLLOWING PAGE)

SE-3, 17 APR 2025 to 15 MAY 2025

SE-3, 17 APR 2025 to 15 MAY 2025