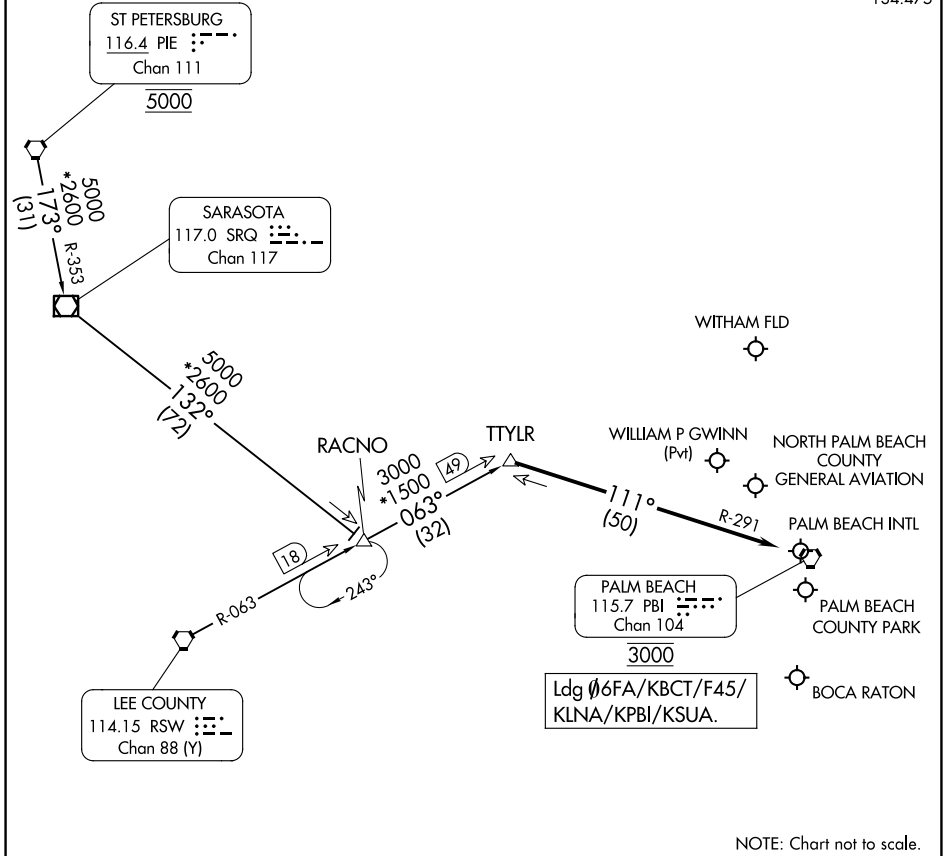


# TTYLR FOUR ARRIVAL

WEST PALM BEACH, FLORIDA

RADAR required. DME required.

PALM BEACH APP CON  
 125.2 317.4  
 PBI D-ATIS  
 123.75  
 SUA ATIS  
 134.475



SE-3, 17 APR 2025 to 15 MAY 2025

SE-3, 17 APR 2025 to 15 MAY 2025

## ARRIVAL ROUTE DESCRIPTION

RACNO TRANSITION (RACNO.TTYLR4): From over RACNO on RSW R-063 to TTYLR, thence. . . .

ST PETERSBURG TRANSITION (PIE.TTYLR4): From over PIE VORTAC on PIE R-173 and SRQ R-353 to SRQ VOR/DME, then on SRQ R-132 to RACNO, then on RSW R-063 to TTYLR, thence. . . .

LANDING ALL AIRPORTS: From TTYLR on PALM BEACH (PBI) R-291 to cross PBI VORTAC at 3000. Expect RADAR vectors.

# TTYLR FOUR ARRIVAL

WEST PALM BEACH, FLORIDA