

WICHITA FALLS, TEXAS

# ILS or LOC/DME Y RWY 33L

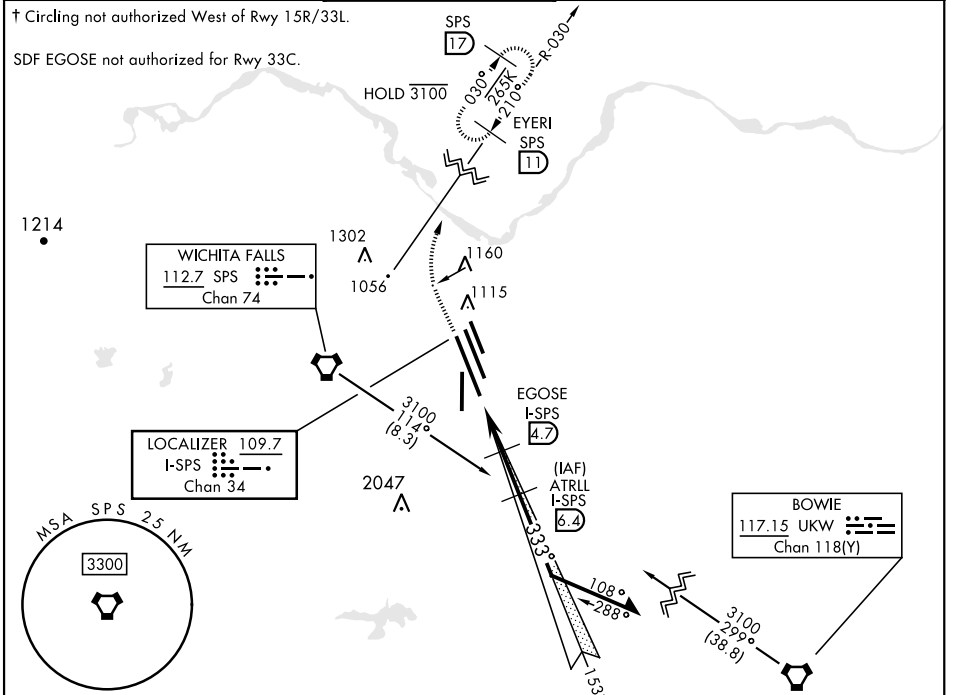
LOC/DME I-SPS <b>109.7</b> Chan <b>34</b>	APCH CRS <b>333°</b>	Rwy ldg 33L <b>13.100</b> 33C <b>10.003</b> TDZE 33L <b>1000</b> 33C <b>989</b> Arprt Elev <b>1019</b>
---	-------------------------	--

[USAF]

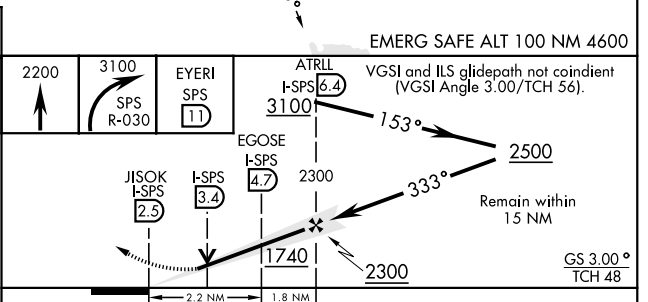
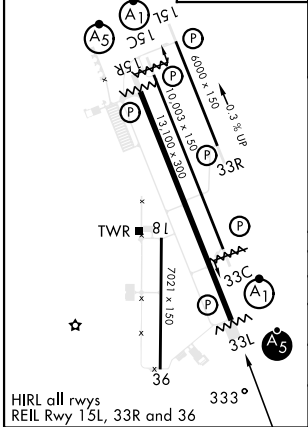
SHEPPARD AFB/  
WICHITA FALLS MUNI (KSPS)

<p>▼ ** When ALS inop, increase vis to 3/4 mile. *** When ALS inop, increase CAT AB vis to 1 mile; CAT CDE vis to 1 1/2 miles.</p>	<p>Rwy 33L MALS R (A5)</p>	<p>Rwy 33C ALS-1 (A1)</p>	<p>MISSED APPROACH: Climb to 2200, then climbing right turn to 3100 via SPS VORTAC R-030 to EYERI (SPS R-030/11) and hold.</p>
--	----------------------------	---------------------------	--

ATIS ★ <b>132.05 269.9</b>	APP CON <b>118.2 269.025</b>	TOWER ★ <b>119.75 279.525</b> (CTAF)	GND CON <b>125.5 289.4</b>	CLNC DEL <b>121.2 282.225</b>	ASR
-------------------------------	---------------------------------	---	-------------------------------	----------------------------------	-----



ELEV <b>1019</b>	TDZE 33L <b>1000</b> TDZE 33C <b>989</b>
------------------	---



CATEGORY	A	B	C	D	E
S-ILS 33L *		1200-1/2	200	(200-1/2)	
S-LOC 33L **		1340-1/2	340	(400-1/2)	
SIDESTEP 33C ***	1440-1/2	451 (500-1/2)	1440-7/8	451 (500-7/8)	
CIRCLING†	1440-1 421 (500-1)	1480-1 461 (500-1)	1480-1 1/2 461 (500-1 1/2)	2100-3	1081 (1100-3)

WICHITA FALLS, TEXAS

33° 59' N-98° 30' W

SHEPPARD AFB/WICHITA FALLS MUNI (KSPS)

Amtd 7 23JAN25

# ILS or LOC/DME Y RWY 33L

SC-2, 17 APR 2025 to 15 MAY 2025

SC-2, 17 APR 2025 to 15 MAY 2025