

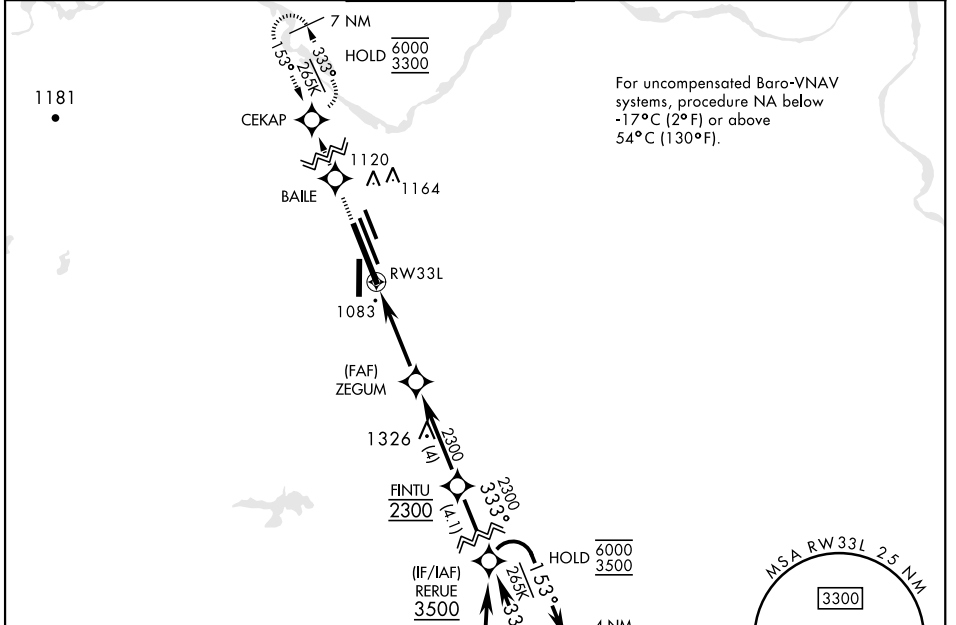
# RNAV (GPS) RWY 33L

APCH CRS	Rwy ldg	<b>13.100</b>
<b>333°</b>	TDZE	<b>1000</b>
	Arprt Elev	<b>1019</b>

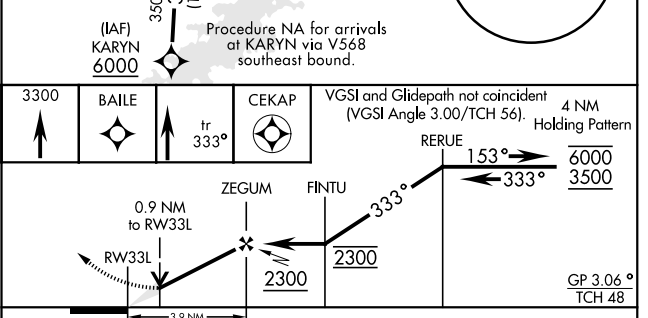
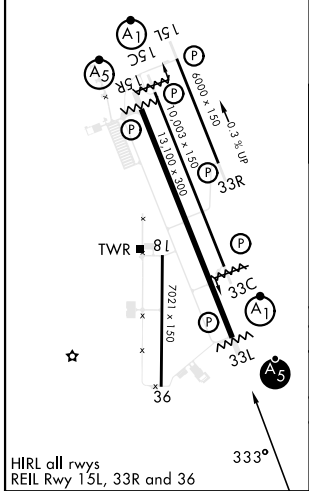
[USAF]

SHEPPARD AFB/WICHITA FALLS MUNI (KSPS)

RNP APCH - GPS		MALSR <b>A5</b>		MISSED APPROACH: Climb to 3300 direct BAILE, track 333° to CEKAP and hold.		
<p>▼ * When ALS inop, increase vis to ¾ mile.                  ** When ALS inop, increase vis to 1 mile.                  *** Circling not authorized SW of Rwy 15R-33L.</p>						
ATIS ★	APP CON	TOWER★		GND CON	CLNC DEL	ASR
<b>132.05 269.9</b>	<b>118.2 269.025</b>	<b>119.750 279.525(CTAF)</b>		<b>125.5 289.4</b>	<b>121.2 282.225</b>	



ELEV	1019	TDZE	1000
------	------	------	------



CATEGORY	A	B	C	D	E
LNVA/VNAV DA *	1255-½		255	(300-½)	
LNVA MDA **	1340-½		340	(400-½)	
***	1440-1 421 (500-1)	1480-1 461 (500-1)	1480-1½ 461 (500-1½)	2100-3 1081 (1100-3)	
☐ CIRCLING					

# RNAV (GPS) RWY 33L

SC-2, 17 APR 2025 to 15 MAY 2025

SC-2, 17 APR 2025 to 15 MAY 2025