

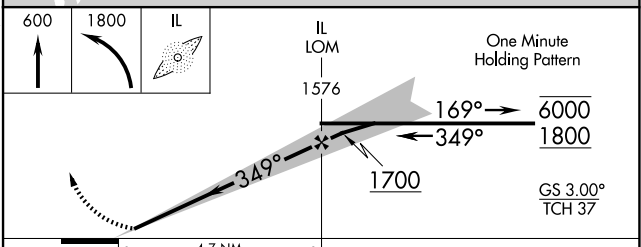
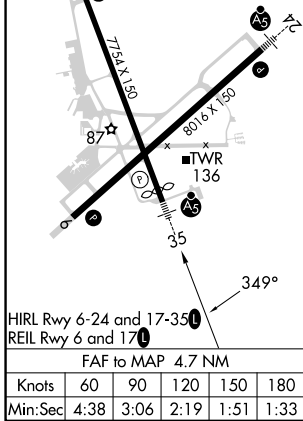
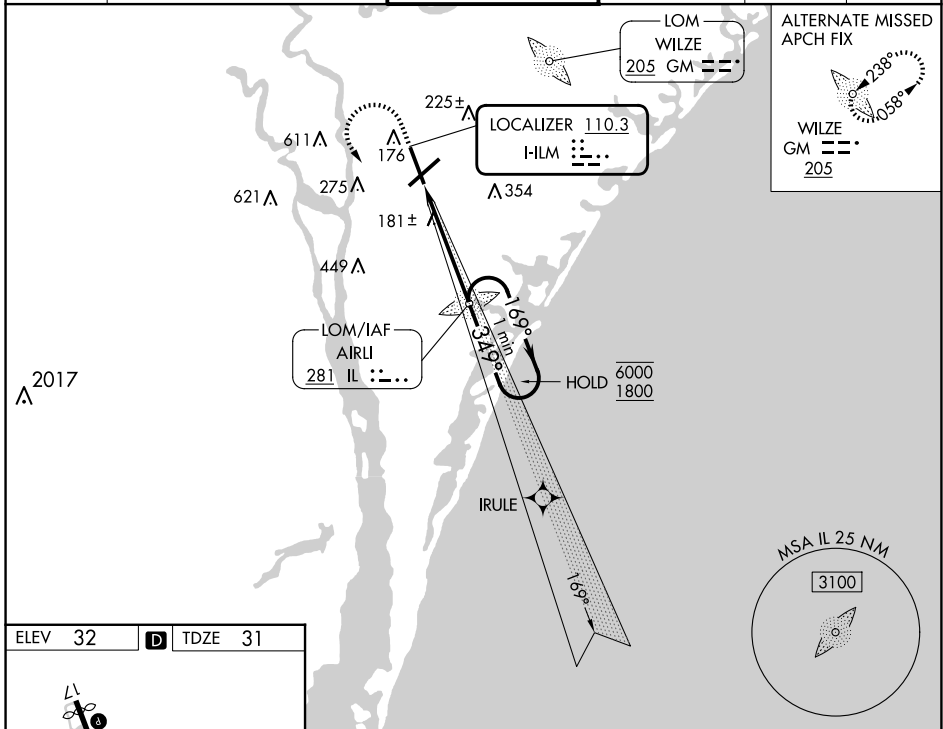
LOC ILM 110.3	APP CRS 349°	Rwy Idg TDZE Apt Elev	7204 31 32
-------------------------	------------------------	-----------------------------	---------------------------------------

ILS Y or LOC RWY 35

WILMINGTON INTL (ILM)

ADF required. RADAR required for procedure entry.		MALSR 	MISSED APPROACH: Climb to 600 then climbing left turn to 1800 direct AIRLI LOM and hold.	
For inop ALS, increase S-LOC 35 Cat C/D visibility to 1 3/8 SM.				

ATIS 124.975	WILMINGTON APP CON★ 118.25 284.65 (164°-343°) 135.75 317.425 (344°-163°)	WILMINGTON TOWER★ 119.9 (CTAF) 239.3	GND CON 121.9 348.6	CLNC DEL 120.875	UNICOM 122.95
------------------------	--	---	-------------------------------	----------------------------	-------------------------



ELEV 32	D	TDZE 31				
CATEGORY		A	B	C	D	
S-ILS 35	242/24 211 (300-1/2)					
S-LOC 35	500/24 469 (500-1/2)		500/50 469 (500-1)			
<input checked="" type="checkbox"/> CIRCLING	560-1 528 (600-1)		720-2 688 (700-2)		920-3 888 (900-3)	

SE-2, 17 APR 2025 to 15 MAY 2025

SE-2, 17 APR 2025 to 15 MAY 2025