

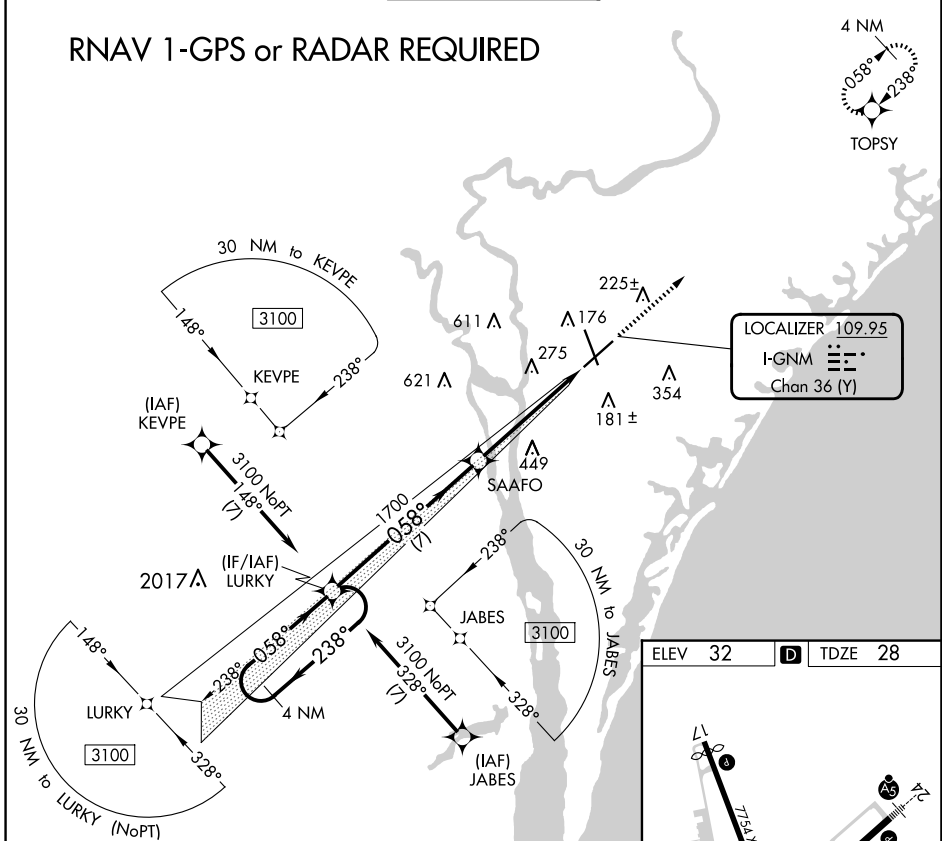
LOC/DME I-GNM 109.95 Chan 36 (Y)	APP CRS 058°	Rwy ldg 8016 TDZE 28 Apt Elev 32
--	------------------------	---

ILS Z RWY 6 WILMINGTON INTL (ILM)

RNAV 1-GPS required. MISSED APPROACH: Climb to 2000 direct TOPSY and hold.

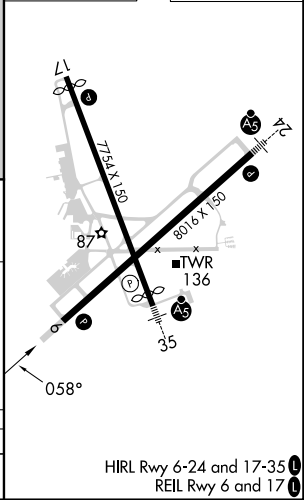
ATIS 124.975	WILMINGTON APP CON★ 118.25 284.65 (164°-343°) 135.75 317.425 (344°-163°)	WILMINGTON TOWER★ 119.9 (CTAF) 0 239.3	GND CON 121.9 348.6	CLNC DEL 120.875	UNICOM 122.95
------------------------	--	--	-------------------------------	----------------------------	-------------------------

RNAV 1-GPS or RADAR REQUIRED



LOCALIZER **109.95**
I-GNM
Chan **36 (Y)**

ELEV 32	D TDZE 28
----------------	-------------------------



4 NM Holding Pattern LURKY	VGSI and ILS glidepath not coincident (VGSI Angle 3.00/TCH 57).	2000	TOPSY
3100 ← 238°	058° →	1700	1700
GS 3.00°	TCH 60	7 NM	5.1 NM
CATEGORY	A	B	C
S-ILS 6	228/40	200 (200-¾)	

HIRL Rwy 6-24 and 17-35
REIL Rwy 6 and 17

SE-2, 17 APR 2025 to 15 MAY 2025

SE-2, 17 APR 2025 to 15 MAY 2025