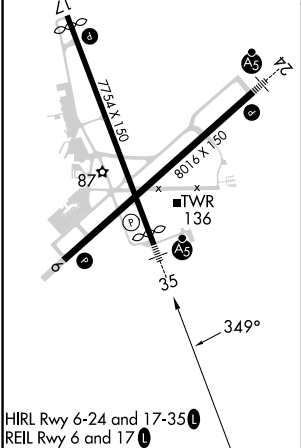
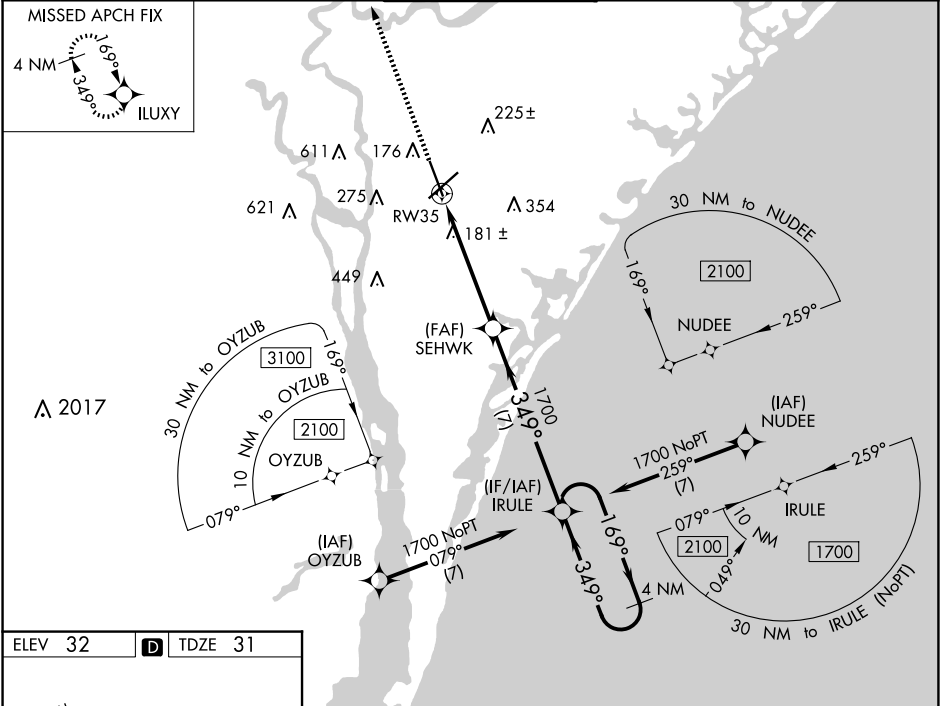


WAAS CH <b>50499</b> <b>W35A</b>	APP CRS <b>349°</b>	Rwy Idg <b>7204</b> TDZE <b>31</b> Apt Elev <b>32</b>
--	------------------------	---

# RNAV (GPS) RWY 35

WILMINGTON INTL (ILM)

<p><b>⚠</b> For uncompensated Baro-VNAV systems, LNAV/VNAV NA below -7°C (20°F) or above 54°C (130°F). DME/DME RNP-0.3 NA. For inop ALS, increase LNAV Cats C/D visibility to 1½ SM.</p>	<p>MALSR</p>	<p>MISSED APPROACH: Climb to 3000 direct ILUXY and hold.</p>			
<p>ATIS <b>124.975</b></p>	<p>WILMINGTON APP CON★ <b>118.25 284.65</b> (164°-343°) <b>135.75 317.425</b> (344°-163°)</p>	<p>WILMINGTON TOWER★ <b>119.9</b> (CTAF) <b>0 239.3</b></p>	<p>GND CON <b>121.9 348.6</b></p>	<p>CLNC DEL <b>120.875</b></p>	<p>UNICOM <b>122.95</b></p>



<p>SEHWK 1700</p> <p>IRULE 4 NM Holding Pattern</p> <p>*LNAV only.</p> <p>*1.4 NM to RW35</p> <p>RW35</p> <p>1700</p> <p>349°</p> <p>169°</p> <p>1700</p> <p>349°</p> <p>GP 3.00° TCH 37</p> <p>1.4 NM 3.8 NM 7 NM</p>																									
<table border="1"> <thead> <tr> <th>CATEGORY</th> <th>A</th> <th>B</th> <th>C</th> <th>D</th> </tr> </thead> <tbody> <tr> <td>LPV DA</td> <td colspan="2">242/24</td> <td colspan="2">211 (300-½)</td> </tr> <tr> <td>LNAV/VNAV DA</td> <td colspan="2">426/45</td> <td colspan="2">395 (400-¾)</td> </tr> <tr> <td>LNAV MDA</td> <td colspan="2">500/24 469 (500-½)</td> <td colspan="2">500/50 469 (500-1)</td> </tr> <tr> <td>CIRCLING</td> <td colspan="2">560-1 528 (600-1)</td> <td colspan="2">720-2 688 (700-2) 920-3 888 (900-3)</td> </tr> </tbody> </table>	CATEGORY	A	B	C	D	LPV DA	242/24		211 (300-½)		LNAV/VNAV DA	426/45		395 (400-¾)		LNAV MDA	500/24 469 (500-½)		500/50 469 (500-1)		CIRCLING	560-1 528 (600-1)		720-2 688 (700-2) 920-3 888 (900-3)	
CATEGORY	A	B	C	D																					
LPV DA	242/24		211 (300-½)																						
LNAV/VNAV DA	426/45		395 (400-¾)																						
LNAV MDA	500/24 469 (500-½)		500/50 469 (500-1)																						
CIRCLING	560-1 528 (600-1)		720-2 688 (700-2) 920-3 888 (900-3)																						