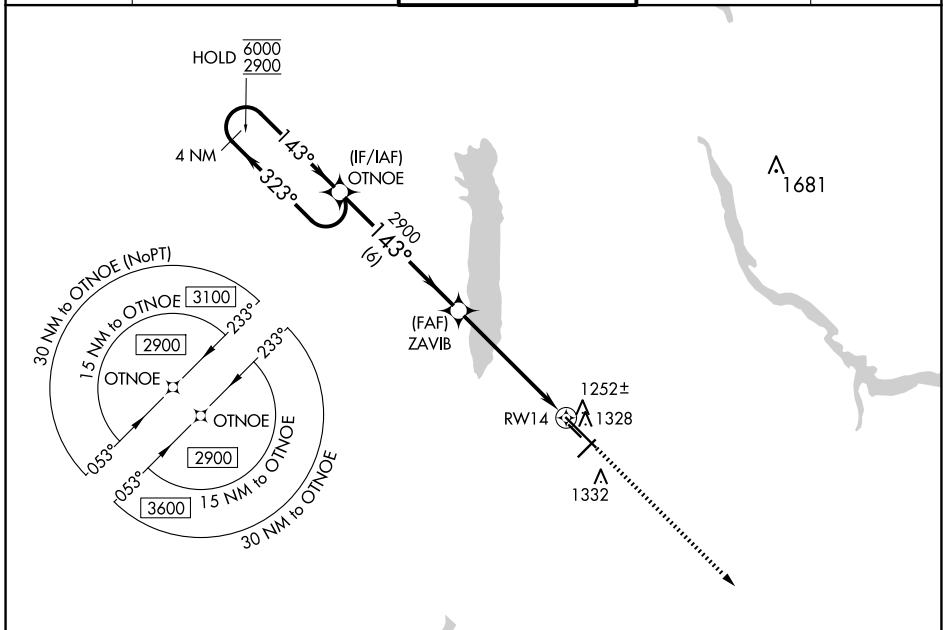


WAAS CH <b>49205</b> <b>W14A</b>	APP CRS <b>143°</b>	Rwy Idg <b>9003</b> TDZE <b>1134</b> Apt Elev <b>1192</b>
--	------------------------	---

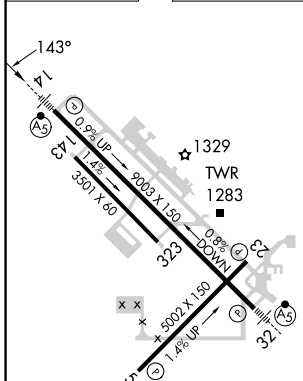
# RNAV (GPS) RWY 14

YOUNGSTOWN/WARREN RGNL (YNG)

RNP APCH - GPS.		MALSR	MISSED APPROACH: Climb to 2900 direct UNERE and hold.	
▽ For uncompensated Baro-VNAV systems, LNAV/VNAV NA below -18°C or above 54°C. Circling Rwy 5 and 23 NA at night. For inop ALS, increase LNAV/VNAV all Cats visibility to ½ SM.				
ATIS <b>123.75</b>	YOUNGSTOWN APP CON * <b>133.95 322.3</b>	YOUNGSTOWN TOWER <b>119.5 263.0</b>	GND CON <b>121.9 275.8</b>	CLNC DEL <b>118.25</b>



ELEV 1192	<b>D</b>	TDZE 1134
-----------	----------	-----------



GP 3.00° TCH 57																									
<table border="1"> <tr> <th>CATEGORY</th> <th>A</th> <th>B</th> <th>C</th> <th>D</th> </tr> <tr> <td>LPV DA</td> <td colspan="4">1334-½ 200 (200-½)</td> </tr> <tr> <td>LNAV/VNAV DA</td> <td colspan="4">1421-½ 287 (300-½)</td> </tr> <tr> <td>LNAV MDA</td> <td>1540-½ 406 (400-½)</td> <td colspan="2">1540-⅝ 406 (400-⅝)</td> <td></td> </tr> <tr> <td><b>C</b> CIRCLING</td> <td>1640-1 448 (500-1)</td> <td>1660-1 468 (500-1)</td> <td>1740-1½ 548 (600-1½)</td> <td>1760-2 568 (600-2)</td> </tr> </table>	CATEGORY	A	B	C	D	LPV DA	1334-½ 200 (200-½)				LNAV/VNAV DA	1421-½ 287 (300-½)				LNAV MDA	1540-½ 406 (400-½)	1540-⅝ 406 (400-⅝)			<b>C</b> CIRCLING	1640-1 448 (500-1)	1660-1 468 (500-1)	1740-1½ 548 (600-1½)	1760-2 568 (600-2)
CATEGORY	A	B	C	D																					
LPV DA	1334-½ 200 (200-½)																								
LNAV/VNAV DA	1421-½ 287 (300-½)																								
LNAV MDA	1540-½ 406 (400-½)	1540-⅝ 406 (400-⅝)																							
<b>C</b> CIRCLING	1640-1 448 (500-1)	1660-1 468 (500-1)	1740-1½ 548 (600-1½)	1760-2 568 (600-2)																					