

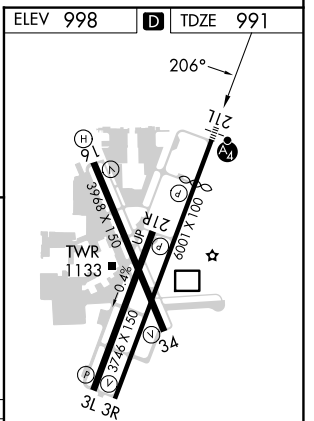
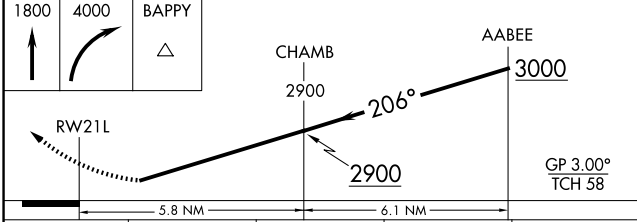
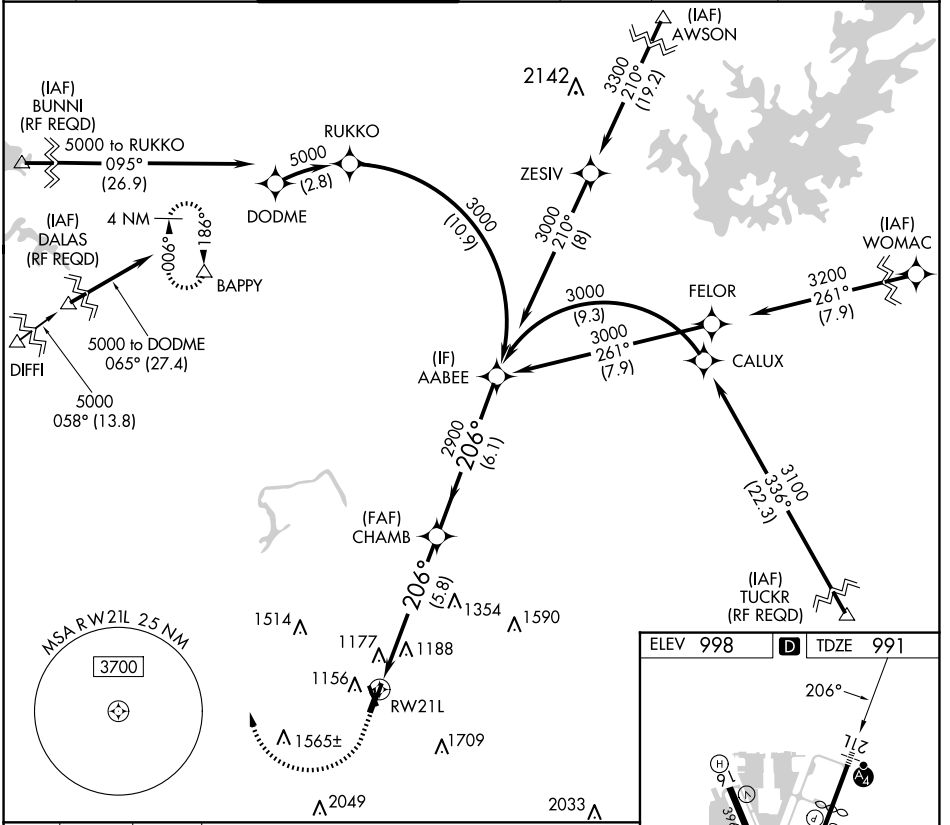
APP CRS <b>206°</b>	Rwy Idg TDZE Apt Elev	<b>4996</b> <b>991</b> <b>998</b>
------------------------	-----------------------------	---

# RNAV (RNP) Z RWY 21L

DEKALB-PEACHTREE (PDK)

For uncompensated Baro-VNAV systems, procedure NA below 1°C (37°F) or above 54°C (130°F). For inop MALSF, increase RNP 0.30 all Cats visibility to 1¾. GPS required.	<b>MALS F</b> 	<b>MISSED APPROACH:</b> Climb to 1800 then climbing right turn to 4000 direct BAPPY and hold.

ATIS <b>128.4</b>	ATLANTA APP CON <b>126,975 239,275</b>	PEACHTREE TOWER★ <b>120.9(CTAF) 281.5</b>	GND CON <b>121.6</b>	CLNC DEL <b>125.2</b>	CLNC DEL <b>120.9</b> (When twr closed)	UNICOM <b>122.95</b>	<b>120.0</b>
----------------------	---	--	-------------------------	--------------------------	---	-------------------------	--------------



CATEGORY	A	B	C	D
RNP 0.30 DA		1502-1¾	511 (600-1¾)	

**AUTHORIZATION REQUIRED**

HIRL Rwy 3R-21L  
MIRL Rwy 16-34 and 3L-21R  
REIL Rwy 3R

SE-4, 17 APR 2025 to 15 MAY 2025

SE-4, 17 APR 2025 to 15 MAY 2025